

THE ART OF LUXURY



BRUUN RASMUSSEN

PART OF THE BONHAMS NETWORK

THE ART OF LUXURY

Traditionel Auktion 914



AUKTION

Torsdag 15. juni kl. 15

EFTERSYN

Onsdag 7. juni kl. 11 - 17

Torsdag 8. juni kl. 11 - 20

Fredag 9. juni kl. 10 - 17

Lørdag 10. juni kl. 11 - 16

Søndag 11. juni kl. 11 - 16

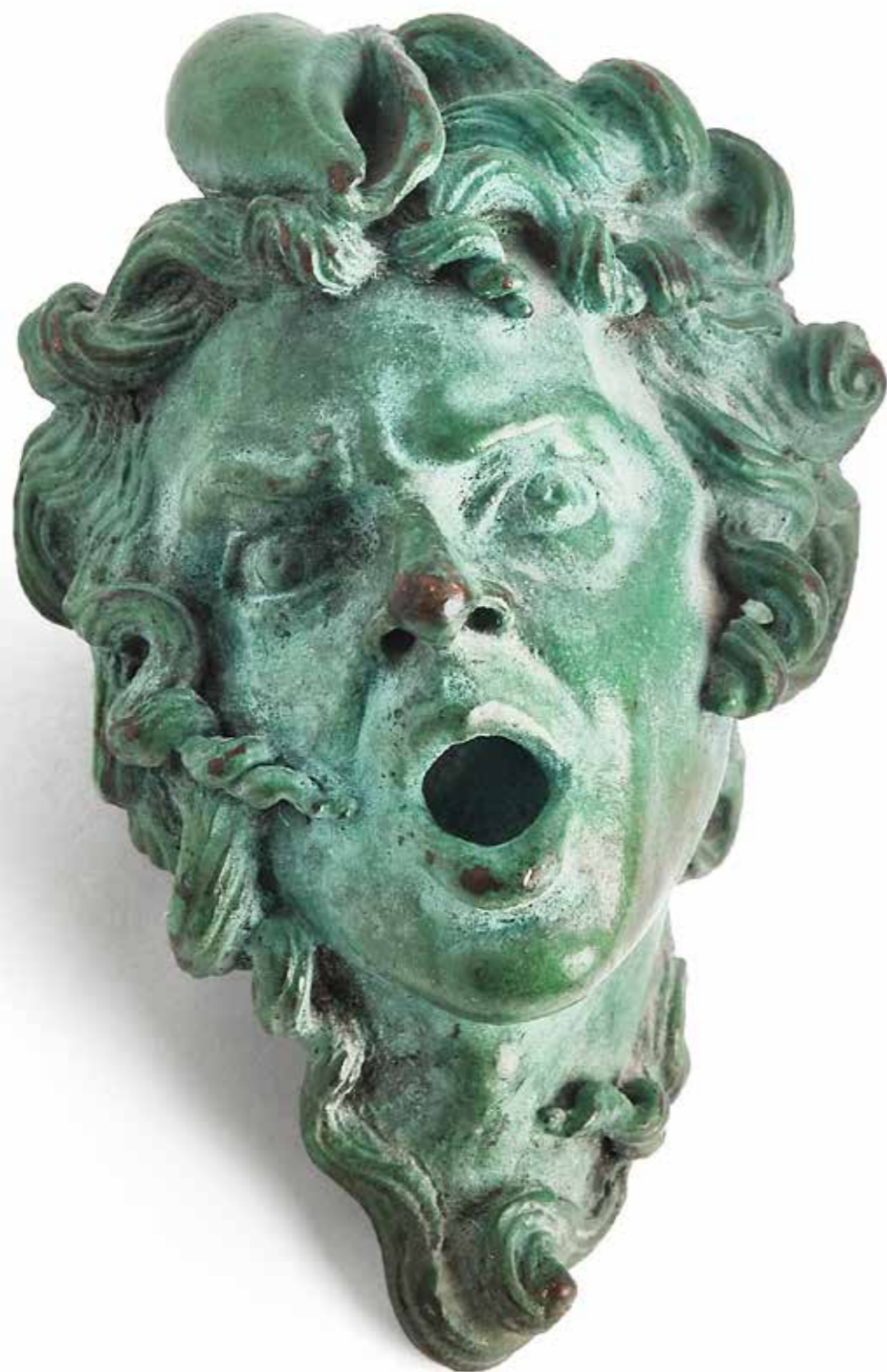
eller efter aftale



BRUUN RASMUSSEN
KUNSTAUKTIONER

Bredgade 33 · 1260 København K · Tlf. +45 8818 1111
info@bruun-rasmussen.dk · bruun-rasmussen.dk





AUKTIONSKALENDER

Mandag	12. juni - Design		
	kl. 15	Kunsthåndværk Møbler, lamper og tæpper	
	kl. 19	Danish Living - Design in Transition	
Tirsdag	13. juni - Modern Art		
	kl. 17	Malerier og skulpturer Grafik	
Onsdag	14. juni - Fine Art and Antiques		
	kl. 13	Asiatisk kunsthåndværk	601 - 669
	kl. 15	Manuskripter og arkivalier fra Valdemars Slot Møbler, ure, sølv, bronzer, porcelæn og tæpper	670 - 688 689 - 851
	kl. 18	Malerier og tegninger Ikoner	852 - 976 977 - 990
Torsdag	15. juni - Eid Mar		
	kl. 14:30	Auktion 918 - Eid Mar-denar	1
Torsdag	15. juni - The Art of Luxury		
	kl. 15	Smykker og tasker	991 - 1234
	kl. 18	Armbåndsure	1235 - 1284
	kl. 20	Netauktion på bruun-rasmussen.dk - Champagne	

VIGTIG INFORMATION VEDR. BUDGIVNING!

Bonhams' internationale kunder kan også byde med på Bruun Rasmussens aktuelle Traditionelle Auktion via Bonhams' hjemmeside: bonhams.com

SIDSTE FRIST FOR AFHENTNING: ONSDAG DEN 28. JUNI

Genstande købt på denne auktion skal være betalt senest otte dage efter fakturadatoen og afhentet i Bredgade 33 senest onsdag den 28. juni. I modsat fald bliver de transporteret til Bruun Rasmussens lager på Paul Bergsøes Vej 16 i Glostrup for købers regning og risiko, hvor de kan afhentes fra fredag den 30. juni. Transporten koster 150 kr. pr. genstand inkl. moms, og opbevaringen koster 150 kr. pr. genstand pr. påbegyndt uge inkl. moms.

Design Events at the Preview

Bredgade 33, Copenhagen

At Bruun Rasmussen, we are part of the festival "3daysofdesign", which each year attracts design enthusiasts from all over the world. This year the festival will be celebrated at galleries and design shops all over Copenhagen from 7-9 June. At our preview, we invite you inside to listen to great talks and experience events about design. The industry's leading design specialist Peter Kjølgaard and the legendary British design pioneer Tom Dixon will be at the helm.

Wednesday 7 June at 11 am to 12 pm

Opening remarks by Peter Kjølgaard and presentation by Tom Dixon

Peter Kjølgaard will give the opening remarks on "Danish Living – Design in Transition".

Tom Dixon will then present his thoughts on the creative process behind the "BIRD Eelgrass Chaise" chairs, which are up for auction.

Thursday 8 June at 4 to 8 pm

Drinks and live music with Tom Dixon and band + DJ

In the beautiful, historic saleroom, we can offer you a drink while Tom Dixon plays bass alongside Johannes Torpe on drums, Kristian Marstal on keyboard and vocals by Maria Marstal – all accompanied by a DJ.

Friday 9 June at 10 to 11 am

Coffee, croissants and a panel discussion

A panel discussion with Tom Dixon, Peter Kjølgaard, journalist Lars Hedebo Olsen from Politiken and design specialist Jonatan Jahn from Bukowskis on the historical traditions of design versus contemporary design.

All days at 11 am to 5 pm

Live performance with "Robot to Craft Special Edition Tom Dixon CONE Lights"

A Universal Robot will assist Tom Dixon in creating unique versions of his latest CONE table lamps. The lamps are made on site and the unique pieces will subsequently be up for auction.

We look forward to welcoming everyone to a couple of festive design days in the auction house!

THE ART OF LUXURY

Live Auction 914



AUCTION

Thursday 15 June 3 pm

PREVIEW

Wednesday 7 June 11 am - 5 pm

Thursday 8 June 11 am - 8 pm

Friday 9 June 10 am - 5 pm

Saturday 10 June 11 am - 4 pm

Sunday 11 June 11 am - 4 pm

or by appointment



BRUUN RASMUSSEN
AUCTIONEERS

Bredgade 33 · DK-1260 Copenhagen K · Tel +45 8818 1111
info@bruun-rasmussen.dk · bruun-rasmussen.com



BRUUN RASMUSSEN
PART OF THE BONHAMS NETWORK

3daysofdesign



DAYS OF SALE

Monday	12 June - Design		
	3 pm	Decorative art Furniture, lamps and carpets	
	7 pm	Danish Living - Design in Transition	
Tuesday	13 June - Modern Art		
	5 pm	Paintings and sculptures Prints	
Wednesday	14 June - Fine Art and Antiques		
	1 pm	Asian art	601 - 669
	3 pm	Manuscripts and documents from Valdemar's Castle Furniture, clocks, silver, bronzes, porcelain and carpets	670 - 688 689 - 851
	6 pm	Paintings and drawings Icons	852 - 976 977 - 990
Thursday	15 June - Eid Mar		
	2:30 pm	Auction 918 - Eid Mar Denarius	1
Thursday	15 June - The Art of Luxury		
	3 pm	Jewellery and handbags	991 - 1234
	6 pm	Wristwatches	1235 - 1284
	8 pm	Online Auction at bruun-rasmussen.dk - Champagne	

IMPORTANT INFORMATION ABOUT BIDDING AT THE AUCTION

Bonhams' international customers can also bid at Bruun Rasmussen's current Live Auction via Bonhams' website: bonhams.com

DEADLINE FOR CLAIMING ITEMS: WEDNESDAY 28 JUNE

Items bought at this auction must be paid no later than eight days from the date of the invoice and claimed at Bredgade 33 by Wednesday 28 June at the latest. Otherwise, they will be moved to Bruun Rasmussen's storage facility at Paul Bergsøes Vej 16 in Glostrup at the buyer's expense and risk. Here, they can be picked up from Friday 30 June. This transportation will cost DKK 150 per item VAT included, and storage will cost DKK 150 per item per week VAT included.

The Art of Luxury – et eksklusivt univers af smykker, fashion, armbåndsure og vin

Vi er stolte over at kunne præsentere dette helt nye katalog under titlen "The Art of Luxury" til sommerens Traditionelle Auktion. I kataloget kan man gå på opdagelse i et eksklusivt univers af luksus inden for smykker, fashion, armbåndsure og vin. Som en del af Bonhams' globale netværk af auktionshuse oplever vi en stor international interesse for disse fire luksus kategorier, som vi derfor sætter endnu mere fokus på i et samlet særskilt katalog. Der er således rig mulighed for at dykke ned i den ypperste kvalitet inden for de mest eftertragtede mærker.

Blandt smykkerne kommer der denne gang dansk smykkekunst under hammeren, når vi præsenterer en samling unikasmykker fra 1960-1970'erne af den populære guldsmed Arje Griegst formgivet i den eventyrlige motivverden af abstrakte ansigter. Kataloget byder desuden på de fineste diamantringe, smykker fra internationalt anerkendte juvelerer som Ole Lynggaard og Cartier samt smukke historiske smykker i stilarterne Belle Époque og Art Deco (f.eks. kat.nr. 1000, 1024 og 1082).

I den fashionable ende kan vi i det nye luksusunivers glæde den entusiastiske samler inden for designtasker med de allermest efterspurgte brands i sjældne udgaver, den bedste kvalitet og til konkurrencedygtige priser, der er svære at finde andre steder. Højdepunkterne er de to Chanel-tasker "Rectangular Mini Flap Bag" i sort og "Flap Bag" i pink samt de to ikoniske Hermès-tasker "Kelly Sellier 32" og "Birkin 35" (f.eks. kat.nr. 1228 og 1234).

Engagerede ursamlere kender tikkende mesterværker, når de ser dem, og det er lige netop, hvad vores katalog indeholder. Her er både nyere og vintage-armbåndsure fra de mest anerkendte brands som Patek Philippe, Cartier og Rolex. Blandt Rolex-urene er et GMT Master med referencen 1675, som har været ejet af en sand eventyrer, der har rejst rundt om Grønland i kajak med uret som navigation, mens Cartier byder på et ur indbygget i en historisk lighter, som tidligere har tilhørt Kong Georg II af Grækenland (f.eks. kat.nr. 1259 og 1279).

Den kompromisløse vinsamler kan glæde sig over vores temaauktion online med sjældne champagner i højeste kvalitet. I den helt luksuriøse ende findes en flaske Dom Perignon rosé 1988 P3, som er en stjerneårgang pakket ind i producentens stilfulde tilgang til rosé champagne. Andre højdepunkter tæller en vifte af årgangschampagner fra Egly-Ouriot og 1981 Krug Collection. Bliv inspireret i katalogets champagnetema på side 12, og find alle champagnerne på vores hjemmeside, hvor de kommer på Netauktion den 15. juni.

De fire kategorier kan fremover findes i kataloget "The Art of Luxury" og dermed ikke i vores øvrige kataloger som før. Smykker, fashion og armbåndsure sælges på Traditionel Auktion og præsenteres i kataloget, mens vin kommer på Netauktion og præsenteres på vores hjemmeside. Ønsker man at modtage det nye katalog i postkassen, kan man tilmelde sig ved at logge ind på sin personlige side på bruun-rasmussen.dk/m/account/catalog_subscriptions. Kataloget kan desuden findes online på vores hjemmeside.

Lad propperne springe!

Vurderings- og salgsdirektør Kasper Nielsen & administrerende direktør Jakob Dupont



The Art of Luxury – an Exclusive World of Jewellery, Fashion, Wristwatches and Wine

We are proud to present this brand-new catalogue entitled "The Art of Luxury" for this summer's Live Auction. In the catalogue, you can discover an exclusive world of luxury with jewellery, fashion, wristwatches and wine. As part of Bonhams' global network of auction houses, we are seeing a great deal of international interest in these four luxury categories, and we are therefore putting even more focus on them in a separate catalogue of their own. You therefore have ample opportunity to delve into the highest quality from some of the most sought-after brands on the following pages.

Among the jewellery, several Danish pieces are up for auction, when we present a collection of unique jewellery from the 1960s-1970s by the popular goldsmith Arje Griegst, designed in the fairytale world of motifs with abstract faces. The catalogue also offers the finest diamond rings, jewellery from internationally recognized jewellers such as Ole Lynggaard and Cartier as well as beautiful historical jewellery in the Belle Époque and Art Deco styles (e.g. cat. no. 1000, 1024 and 1082).

At the fashionable end of this new world of luxury we can please the enthusiastic collector of designer bags with the most sought-after brands in rare editions, the best quality and at competitive prices that are hard to find elsewhere. The highlights are the two Chanel bags "Rectangular Mini Flap Bag" in black and "Flap Bag" in pink as well as the two iconic Hermès bags "Kelly Sellier 32" and "Birkin 35" (e.g. cat. no. 1228 and 1234).

Dedicated wristwatch collectors know ticking masterpieces when they see them, and masterpieces are exactly what our catalogue is full of. There are both newer and vintage wristwatches from the most well-known brands such as Patek Philippe, Cartier and Rolex. Among the Rolex watches is a GMT Master reference 1675, which has been owned by a true adventurer who journeyed around Greenland in a kayak using the watch for navigation, while Cartier offers a watch built into a historic lighter that previously belonged to King George II of Greece (e.g. cat. no. 1259 and 1279).

The uncompromising wine collector can enjoy our Online Theme Auction with rare Champagnes of the highest quality. At the very luxurious end is a bottle of Dom Perignon rosé 1988 P3, which is a stellar vintage wrapped in the producer's stylish approach to rosé Champagne. Other highlights include a range of vintage champagnes from Egly-Ouriet and the 1981 Krug Collection. Learn more about the Champagne theme auction on page 12 of this catalogue, and find all the Champagnes on our website, where they will be auctioned off on 15 June.

The four categories can from now on be found in the catalogue "The Art of Luxury" and therefore not in our other catalogues as previously. Jewellery, fashion and wristwatches are sold at Live Auctions and all the lots are presented in this catalogue, while wine will be sold at an Online Auction and the lots presented on our website. If you want to receive the new catalogue at home, you can sign up for a subscription by logging on to your personal page at bruun-rasmussen.dk/m/account/catalog_subscriptions. The catalogue can also be found online on our website.

Let's raise our glasses in celebration of this new catalogue!

Director of Valuation and Sales Kasper Nielsen & CEO Jakob Dupont



The Art of Champagne

Wine is an essential part of our “The Art of Luxury” category, and with an Online Auction on 15 June, you can get your fill of liquid luxury with a sale entirely dedicated to Champagne: the most celebrated drink on the planet, which you deserve in victory and need in defeat.

Champagne differs from other types of wine by partly coming from the specific and renowned region in France, partly by having two rounds of fermentation, where the second round takes place in the actual bottle with a mixture of still wine, sugar and yeast added. It is also this second round which ultimately gives Champagne its characteristic bubbles, a process also known as “prise de mousse” or ‘capturing the sparkle’.

The auction includes several highlights. Here we would like to point you in the direction of just a few of the many exciting lots. First up, we find a bottle of Dom Perignon rosé 1988 P3. A stellar vintage wrapped in the producer’s vinous and stylish approach to rosé Champagne. In the words of the winemaker, P3 marks a new stage in the timeline of this Champagne, which comes to life after many years on the yeast sediment. Combined with a later moment of disgorgement, the removal of the yeast lees, this process contributes to an overall impression of a wine that is the essence of nerve, intensity and freshness.

Speaking of intensity, we have also gathered a range of vintage Champagnes from Egly-Ouriet in large sizes at this auction. It is (unfortunately) no longer a secret that the wines from this maker are of a towering high quality and one of the best impressions of pure pinot noir power, with acidity to hold back the red fruit so that the wines are never experienced as flabby or inharmonious. Anselme Selosse gave the producer his blessing long ago and thereby elevated Egly-Ouriet from your middle-of-the-road meal to a Michelin-worthy experience.

We complete this three-stage rocket introduction of our Champagne auction with another of the big brands in the production of the bubbly wine. Out of the many lots with Krug as a producer, the following bottle stands out: the 1981 Krug Collection in magnum size. 1981 is not the most celebrated vintage in Champagne in general. However, this vintage was highly regarded by the late Henri Krug himself, who celebrated it as one of the best made during his time as head of the company. There is a large proportion of Chardonnay in the bottle compared to the typical distribution in vintage Krug, and then of course there is the fact that there is enough in the bottle for a small group to retaste it again and again, which bodes well for a magnificent experience.

We wish everyone good luck at the Online Auction at 8 PM (CEST) on 15 June. You can already place your bids at bruun-rasmussen.dk from 2 June, where the auction will go online.

Santé!

CHAMPAGNE

Thursday 15 June 8 pm

At bruun-rasmussen.dk



SPECIALISTS IN JEWELLERY,
FASHION, WATCHES AND WINE



Head of International Jewellery
Katrin Mikkelsen Sørensen
+45 8818 1174
kms@bruun-rasmussen.dk



Jewellery and Handbags
Lise Jacobsen
+45 8818 1175
bst@bruun-rasmussen.dk



Fashion
Emma Marie Huus-Thomsen
+45 8818 1179
eht@bruun-rasmussen.dk



Head of Department of Wristwatches
Vilhelm Islandi Bramsen
+45 8818 1239
vib@bruun-rasmussen.dk



Wristwatches
Frederik Plum
+45 8818 1168
fp@bruun-rasmussen.dk



Pocket Watches
Heidi Schophuus Jensen
+45 8818 1163
hsj@bruun-rasmussen.dk



Head of Department of Wine
Thomas Rosendahl Andersen
+45 8818 1206
tra@bruun-rasmussen.dk



Director of Valuations and Sales
Kasper Nielsen
+45 8818 1121
kn@bruun-rasmussen.dk



Shipping
Tina Bavnbek Jepsen
+45 8818 1056
tbj@bruun-rasmussen.dk



Representative France + Belgium
Ditte Herborg Krogh
+33 6 6185 4564
dhk@bruun-rasmussen.dk



Global Head of Jewellery - Bonhams
Jean Ghika
+44 20 7468 8282
jean.ghika@bonhams.com

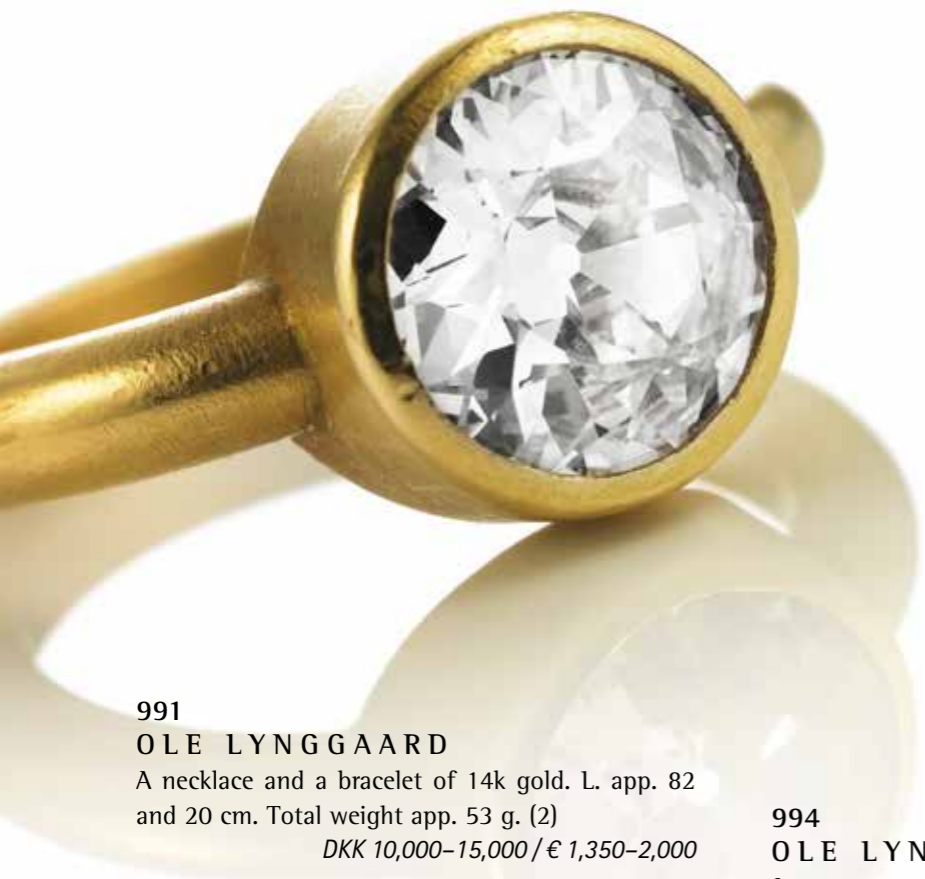


Global Head of Watches - Bonhams
Jonathan Darracott
+44 20 7447 7412
jonathan.darracott@bonhams.com

JEWELLERY AND HANDBAGS

Thursday 15 June 3 pm
Lot 991 - 1234





991
OLE LYNNGGAARD
 A necklace and a bracelet of 14k gold. L. app. 82 and 20 cm. Total weight app. 53 g. (2)
 DKK 10,000–15,000 / € 1,350–2,000

992
 A pair of diamond ear pendants each set with numerous brilliant-cut diamonds weighing a total of app. 3.60 ct., mounted in 18k gold. Colour: Crystal (J). Clarity: VS-P1. L. app. 3 cm. (2)
 DKK 10,000–15,000 / € 1,350–2,000

993
OLE LYNNGGAARD
 A diamond ring "Heart" set with numerous brilliant-cut diamonds weighing a total of app. 0.27 ct., mounted in 18k gold. Colour: Top Wesselton (G). Clarity: VS. Size 51.
 Retail price app. DKK 36,900.
 DKK 10,000–15,000 / € 1,350–2,000

994
OLE LYNNGGAARD
 A moonstone and diamond ring "Lotus" set with a cabochon moonstone and brilliant-cut diamonds weighing a total of app. 0.14 ct., mounted in 18k gold, white gold and rose gold. Colour: Top Wesselton (G). Clarity: VS. App. size 56. Weight app. 35 g. Design Charlotte Lynggaard.
 Retail price app. DKK 92,900.
 Accompanied by original case..
 DKK 25,000–30,000 / € 3,350–4,050

995
MARLENE JUHL - JØRGENSEN
 A diamond solitaire ring set with an old-cut diamond weighing app. 2.41 ct., mounted in 18k gold. Colour: Top Cape (K). Clarity: VS. Size 51.
 DKK 30,000–50,000 / € 4,050–6,700



Arje Griegst

Arje Griegst opened his workshop in 1963 during the height of Danish mid-century modernism. He created jewellery in quite a different style that was closer to the baroque or Art Nouveau style with organic curves, swirling gold spirals, faces morphing into garlands and bodies morphing into trees, with obvious references to Greek mythology.

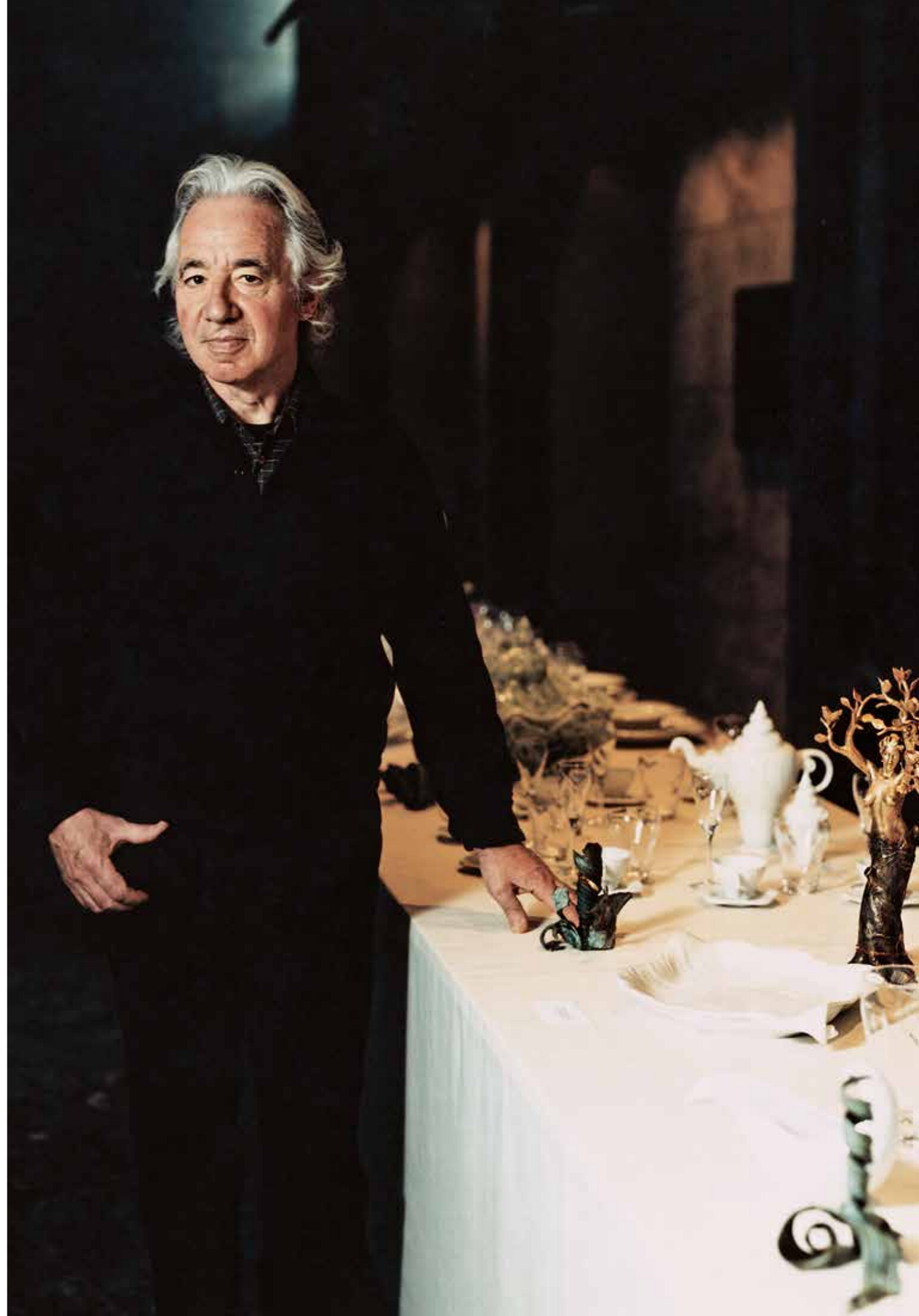
Much of Arje Griegst's jewellery is made with the cire perdue technique in order to achieve a greater artistic expression. This technique gave Arje Griegst a larger flexibility in positioning the stones and a more spontaneous expression than the traditional gold smithing.

Cire perdue is a traditional method for casting bronze sculptures and is unusual in jewellery making. The metal is poured into a mold that has been created by means of a wax model. Once the mold is made, the wax model is melted and drained away.

Faces appear throughout Arje Griegst's work. Many are self-portraits depicting Griegst's emotions such as fear. The opal and diamond pendant "Face of the Night" is an example of this, and the pendant seems strongly inspired by Edvard Munch's painting "The Scream".

In 1976, Griegst designed the Golden Poppies Headpiece with climbing flowers and drops of moonstones, diamonds, pearls and opals for Queen Margrethe of Denmark. He has also designed the Conch service for Royal Copenhagen as well as the gilded Coral Water Fountain in Tivoli Gardens.

His works have appeared in numerous museums including the Design Museum Denmark, the National Museum in Stockholm, the Victoria and Albert Museum in London, and the Metropolitan Museum of Art in New York.





996^{ARR}

ARJE GRIEGST

A lapis lazuli and opal ring set with carved lapis lazuli in the shape of a face encircled by numerous cabochon moonstones and opals, mounted in 20k gold. Size 52. Circa 1960-70.

DKK 30,000-40,000 / € 4,050-5,350

997^{ARR}

ARJE GRIEGST

An opal and diamond ring "Lucy in the Sky" set with a cabochon opal, amethyst, tourmaline, moonstone and sapphire and brilliant-cut diamonds, mounted in 20k gold. Signed AG. App. size 52. Weight app. 25 g. Circa 1960-70.

DKK 20,000-30,000 / € 2,700-4,050

998^{ARR}

ARJE GRIEGST

An opal, pearl and diamond brooch in the shape of flower with a face encircled by leaves, set with cabochon solid opals, a baroque seed pearl and brilliant-cut diamonds, mounted in 20k gold. L. app. 8 cm. Weight app. 23 g. Circa 1960-70.

DKK 40,000-60,000 / € 5,350-8,050

999

ARJE GRIEGST

A gold bangle "Spiral" of 18k gold. Signed Griegst. Diam. app. 5.5 cm. Flexible. Weight app. 53.5 g. Circa. 1970.

Similar depicted and mentioned in Kerstin Wickman: "Arje Griegst. Guldsmed, designer og billedhugger // Goldsmith, Designer and Sculptor", Forlaget Vandkunsten, 2013, pp. 150-159.

DKK 60,000-80,000 / € 8,050-10,500



996



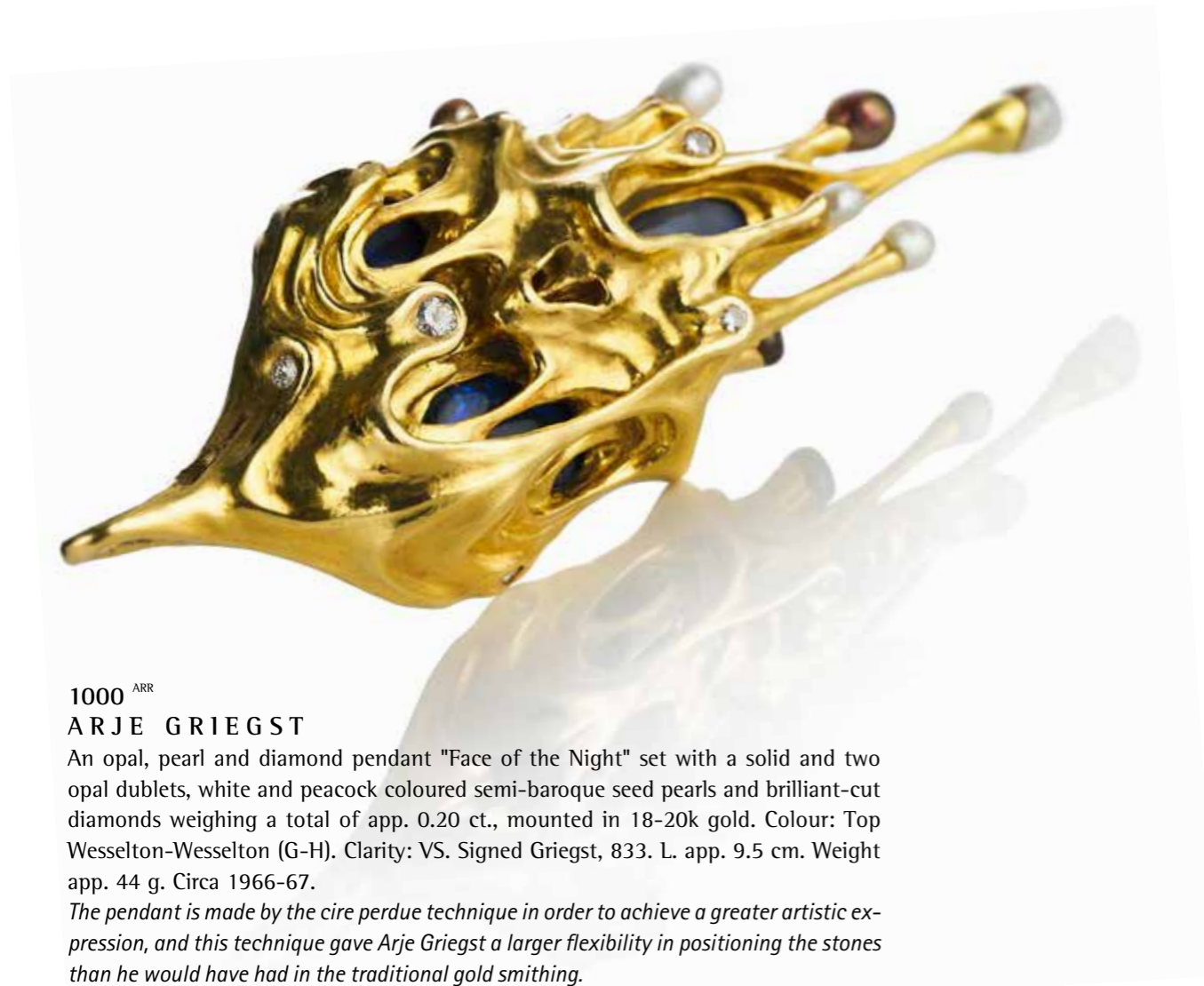
997



998



999



1000^{ARR}
ARJE GRIEGST

An opal, pearl and diamond pendant "Face of the Night" set with a solid and two opal doublets, white and peacock coloured semi-baroque seed pearls and brilliant-cut diamonds weighing a total of app. 0.20 ct., mounted in 18-20k gold. Colour: Top Wesselton-Wesselton (G-H). Clarity: VS. Signed Griegst, 833. L. app. 9.5 cm. Weight app. 44 g. Circa 1966-67.

The pendant is made by the cire perdue technique in order to achieve a greater artistic expression, and this technique gave Arje Griegst a larger flexibility in positioning the stones than he would have had in the traditional gold smithing.

A news article from 1967 describes Arje Griegst's new jewellery which uses the human face as a subject, "A new necklace that is downright frightful. A melting face with eyes and mouth as holes of dark opals, a fantastically technical work, modelled in wax, cast in thick 20 ct. gold, acidified, chased and polished." Kerstin Wickman, Goldsmith, Designer and Sculptor, p. 93. Similar depicted p. 97 and 365. Vandkunsten 2013.

This pendant is presumably one of three pendants.

DKK 80,000–100,000 / € 10,500–13,500



1000



1001^{ARR}
ARJE GRIEGST

A silver necklace with a tourmaline and pearl pendant set with numerous pink cabochon tourmalines, mother of pearl and a semi-baroque seed pearl, mounted in 18k gold and silver. Signed AG. Pearl diam. app. 7.0 mm. L. necklace app. 60 cm.

DKK 15,000–20,000 / € 2,000–2,700

1002^{ARR}
ARJE GRIEGST

An opal, sapphire and emerald pendant set with a carved opal in the shape of a face encircled by numerous pear-shaped emeralds and oval-cut sapphires, mounted in 20k gold. Signed Griegst. L. app. 4.8 cm. 1973. DKK 30,000–40,000 / € 4,050–5,350

1003^{ARR}
ARJE GRIEGST

A tourmaline pendant set with a cabochon tourmaline and rough green stones, mounted in 21k gold and silver. L. app. 10 cm.

DKK 15,000–20,000 / € 2,000–2,700

1004^{ARR}
ARJE GRIEGST

A ring/sculpture "Merman" in green patinated bronze. L. app. 4,3 x 6,2 cm. Signed Griegst. 1983. *Depicted in Kerstin Wickman, Goldsmith, Designer and Sculptor, p. 284. Vandkunsten 2013.*

DKK 15,000–20,000 / € 2,000–2,700



1001



1002



1003



1004



1005
TIFFANY & CO.
An emerald bracelet in the shape of a snake set with numerous circular-cut emeralds, mounted in 18k gold. Signed Tiffany, 1/89. Weight app. 155 g. Flexible length. Circa 1960-70.
DKK 50,000-60,000 / € 6,700-8,050

1006
FARAONE
A ruby bracelet in the shape of a snake set with circular-cut rubies, mounted in 18k gold. Signed Faraone, Milan. Flexible length. Weight app. 217 g.
DKK 50,000-75,000 / € 6,700-10,000



1005



1006



1007

A diamond ring set with an emerald-cut fancy yellow diamond weighing app. 6.79 ct. flanked by two baguette-cut diamonds weighing a total of app. 0.87 ct., mounted in 18k gold. Clarity yellow diamond: SI. Diamond with GIA inscription.

Grading of baguette-cut diamonds: Colour: River (E). Clarity: VVS. Size 54.

Accompanied by GIA report no. 5222826005. 2023.

DKK 300,000–400,000 / € 40,500–53,500





1008

A diamond ring set with an emerald-cut diamond weighing app. 4.08 ct., mounted in 18k white gold. Colour: Top Cape (K). Clarity: SI. Size 54.

DKK 150,000–200,000 / € 20,000–27,000

1009

CARTIER

An Art Deco diamond double clip set with with numerous old, baguette, square and cushion-cut diamonds weighing a total of app. 2.00 ct., mounted in platinum. Colour: Wesselton-Crystal (H-J). Clarity: SI. L. app. 5.5 x 1.5 cm. Weight app. 18 g. Circa 1920–30. *Accompanied by original case.*

DKK 20,000–30,000 / € 2,700–4,050

1010

An Art Deco diamond bracelet set with numerous old, brilliant, single, baguette and square-cut diamonds weighing a total of app. 20.00 ct., mounted in platinum. Colour: Top Wesselton-Top Crystal (G-I). Clarity: VVS-SI. L. app. 18 cm. Circa 1930.

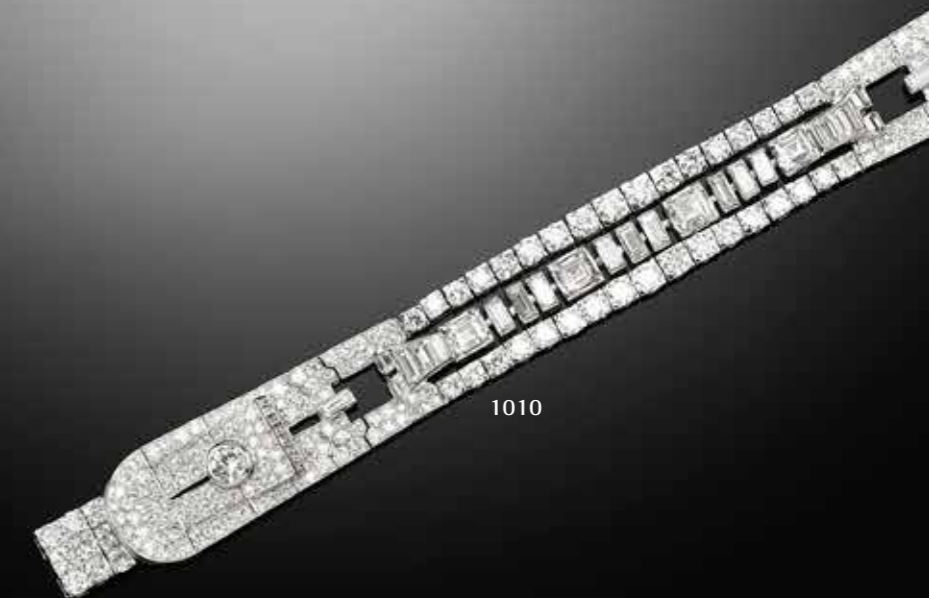
DKK 150,000–200,000 / € 20,000–27,000



1008



1009



1010



1014

A diamond eternity ring set with numerous brilliant-cut diamonds weighing a total of app. 4.14 ct., mounted in 18k white gold. Colour: Wesselton-Top Crystal (H-I). Clarity: VS-SI. Size 53.

DKK 40,000–50,000 / € 5,350–6,700

1015

A diamond ring set with an oval brilliant-cut diamond weighing app. 0.50 ct. encircled by numerous brilliant-cut diamonds weighing a total of app. 0.50 ct., mounted in 18k white gold. Grading of center stone: Colour: Crystal (J). Clarity: VS. Diamond with GIA inscription. Grading of other stones: Colour: Top Wesselton-Wesselton (F-H). Clarity: VS. Size 55. Accompanied by GIA report no. 6441308047. 2022.

DKK 10,000–15,000 / € 1,350–2,000

1016

CARTIER

A "Love" bangle of 18k white gold. Signed Cartier. Ref. no. MEU970. Diam. app. 6,8 cm. Size. 21. 2021. Accompanied by original case and certificate. Retail price DKK 44,100.

DKK 15,000–20,000 / € 2,000–2,700

1017

CARTIER

A bracelet "Clash De Cartier" of 18k white gold. Signed Cartier. Ref. no. MVM 144. L. app. 20.5 cm. Weight app. 43.8 g. 2021. Accompanied by original case and certificate. Retail price app. DKK 78,000.

DKK 20,000–30,000 / € 2,700–4,050

1011

TIFFANY & CO.

A diamond pendant in the shape of a cross set with numerous brilliant-cut diamonds weighing a total of app. 0.80 ct., mounted in platinum. Colour: Top Wesselton (F-G). Clarity: VVS. L. app. 2 cm. Accompanied by a sterling silver necklace. L. app. 70 cm.

DKK 20,000–25,000 / € 2,700–3,350

1012

A pair of diamond ear studs each set with a brilliant-cut diamond weighing a total of app. 2.01 ct., mounted in 18k white gold. Colour: River (E). Clarity: VS2. Diam. app. 6.5 mm. (2)

Accompanied by GIA report no. 2466031033, 2023 and HRD report no. 220000201517, 2022.

DKK 110,000–120,000 / € 15,000–16,000

1013

CARTIER

A diamond ring "Paris Nouvelle Vague" set with numerous brilliant-cut diamonds weighing a total of app. 1.00 ct., mounted in 18k white gold. Colour: Top Wesselton (F). Clarity: VVS. Size 51. Weight app. 15 g.

Accompanied by original case.

DKK 15,000–20,000 / € 2,000–2,700



1012



1011



1013



1014



1015



1016



1017



1018
SHAMBALLA

A diamond ring "SOS Spinner Ring" set with numerous brilliant-cut diamonds, mounted in 18k partly black rhodinated white gold. Colour: Top Wesselton (G). Clarity: VS. Size 63-64. W. app. 1 cm. Weight app. 19.8 g.

Retail price DKK 82,500.

DKK 15,000-20,000 / € 2,000-2,700

1019
SHAMBALLA

A diamond necklace with beads of onyx and beads of 18k white gold set with numerous brilliant-cut diamonds weighing a total of 18.00 ct., a large bar pendant set with two brilliant-cut diamonds, mounted in 18k white gold and black braid. Pearl diam. app. 10 mm. Colour: Top Wesselton (G). Clarity: VS. L. app. 83 cm.

Retail price DKK 592,900.

DKK 100,000-150,000 / € 13,500-20,000

1020
A jewellery set comprising of a ring and a pair of earrings each set with numerous brilliant, trapeze and baguette-cut diamonds, mounted in 18k white gold. Size app. 54. (3)

DKK 10,000-15,000 / € 1,350-2,000

1021
OLE LYNGGAARD

An aquamarine and diamond ring "Lotus" set with a green cabochon aquamarine and numerous brilliant-cut diamonds weighing a total of app. 0.05 ct., mounted in 18k gold and white gold. Colour: Top Wesselton (G). Clarity: VS. Size 3. App. size 53. Design Charlotte Lynggaard.

Retail price DKK 40,900.

Accompanied by original case and certificate.

DKK 10,000-15,000 / € 1,350-2,000

1022
SHAMBALLA

A diamond bracelet set with numerous grey diamond beads and brilliant-cut diamonds, mounted in 18k gold and grey cord. Pearl diam. app. 5.3-5.6 cm.

Retail price app. DKK 100,000.

DKK 20,000-30,000 / € 2,700-4,050

1023
A diamond bracelet set with numerous baguette and brilliant-cut diamonds weighing a total of app. 5.04 ct., mounted in 18k white gold. Colour: Wesselton-Top Crystal (H-I). Clarity: VS-P1. L. app. 18 cm.

DKK 50,000-55,000 / € 6,700-7,400





1024

A diamond ring set with a radiant-cut diamond weighing app. 5.02 ct. flanked by two trilliant-cut diamonds weighing a total of app. 1.50 ct., mounted in 18k white gold. Grading of center diamond: Colour: Top Crystal (I). Clarity: VVS. Size 54.

Accompanied by HRD report no. 05020449001. Antwerp, 2005.

DKK 500,000–700,000 / € 67,000–94,000





1025
A pair of diamond ear pendants each set with an old-cut diamond weighing a total of app. 5.20 ct. and a brilliant-cut diamond weighing a total of app. 0.70 ct., totalling app. 5.90 ct., mounted in 18k gold and white gold. Grading of old-cut diamonds. Colour: Cape (M). Clarity: VS. L. app. 2 cm. (2)
DKK 175,000–200,000 / € 23,500–27,000

1026
A Belle Époque emerald and diamond ring set with an old-cut diamond weighing app. 2.83 ct. flanked by two emerald-cut Colombian emeralds weighing a total of app. 1.65 ct., mounted in platinum. Colour: Light Yellow (P). Clarity: VS. Size 55. Circa 1900. Accompanied by Gisgem report no. 18447 indicating: "Data and characteristics suggest Colombia". 2021.
DKK 100,000–150,000 / € 13,500–20,000

1027
A Belle Époque emerald and diamond ring set with a square-cut emerald encircled by numerous old and single-cut diamonds, mounted in platinum and 14k gold. Size 54. Circa 1900.
DKK 10,000–12,000 / € 1,350–1,600

1028
An emerald and diamond bracelet set with numerous emerald-cut emeralds weighing a total of app. 7.56 ct. and rose-cut diamonds weighing a total of app. 2.32 ct., mounted in 14k gold and silver. L. app. 19.5 cm. W. app. 1.0–2.0 cm. Circa 1890–1900.
DKK 15,000–20,000 / € 2,000–2,700



1025



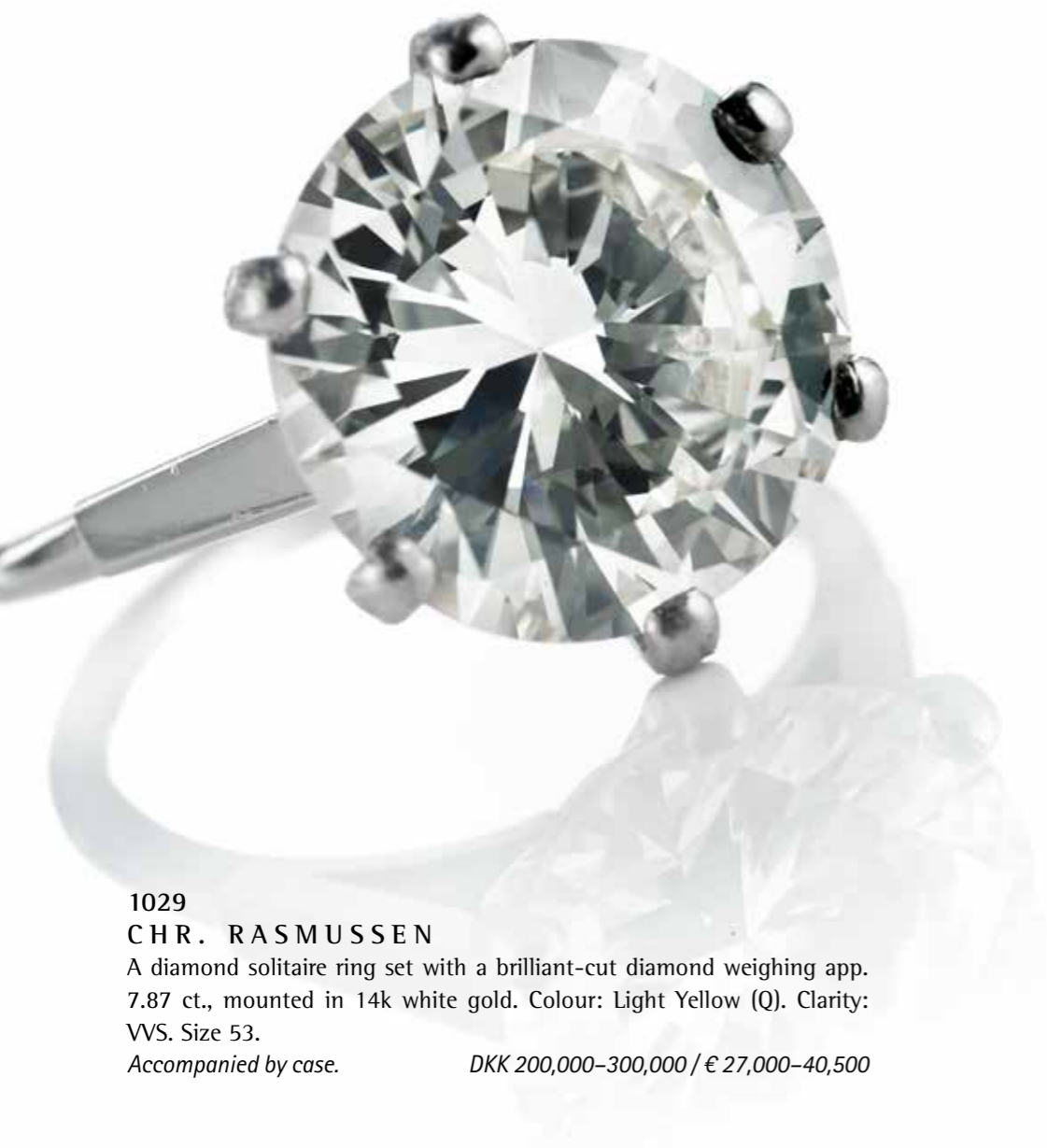
1026



1027



1028



1029
CHR. RASMUSSEN

A diamond solitaire ring set with a brilliant-cut diamond weighing app. 7.87 ct., mounted in 14k white gold. Colour: Light Yellow (Q). Clarity: VVS. Size 53.

Accompanied by case.

DKK 200,000–300,000 / € 27,000–40,500





1030
BULGARI
A “BVLGARI BVLGARI” diamond necklace set with numerous brilliant-cut diamonds weighing a total of app. 0.10 ct., mounted in 18k gold. L. pendant app. 4.5 cm. Diam. app. 3.5 cm. L. app. 47.5-56 cm.
DKK 15,000–20,000 / € 2,000–2,700

1031
CHOPARD
A pair of diamond ear pendants “Happy Diamonds” each set with numerous brilliant-cut diamonds, mounted in 18k gold. Serial no. 9304398 83/1084. L. app. 1 cm. (2) DKK 10,000–15,000 / € 1,350–2,000

1032
A pair of diamond ear studs each set with a brilliant-cut diamond weighing a total of app. 3.12 ct., mounted in 18k gold. Colour: Top Wesselton-Wesselton (G-H). Clarity: P1. Diam. app. 10 mm. (2)
DKK 80,000–100,000 / € 10,500–13,500

1033
A diamond ring set with numerous brilliant-cut diamonds weighing a total of app. 3.95 ct., mounted in 18k gold. Colour: Wesselton (H). Clarity: VVS. Size 53.
Cut quality: Triple excellent-cut. Hearts & Arrows.
DKK 30,000–40,000 / € 4,050–5,350

1034
BULGARI
A bracelet “B.Zero1” of 18k gold and white gold. L. app. 19 cm.
Accompanied by original case.
DKK 12,000–15,000 / € 1,600–2,000

1035
Three bangles of 18k gold, white gold and rose gold. Diam. app. 5.7 cm. Total weight app. 77 g. (3)
DKK 30,000–40,000 / € 4,050–5,350



1031

1030

1032

1033

1034

1035



1036

A pearl tiara set with numerous cultured pearls, mounted in 14k gold. Pearl diam. app. 4.0-7.0 mm. Diam app. ca. 12 x 16 cm. Weight app. 51 g. Circa 1940-50.

Provenance: Margit and Erik Brandt.

DKK 10,000-15,000 / € 1,350-2,000

1037

A pair of diamond ear clips each set with numerous brilliant-cut diamonds weighing a total of app. 1.80 ct., mounted in 13k gold and white gold. L. app. 2.3 x 3.2 cm. (2)

DKK 15,000-20,000 / € 2,000-2,700

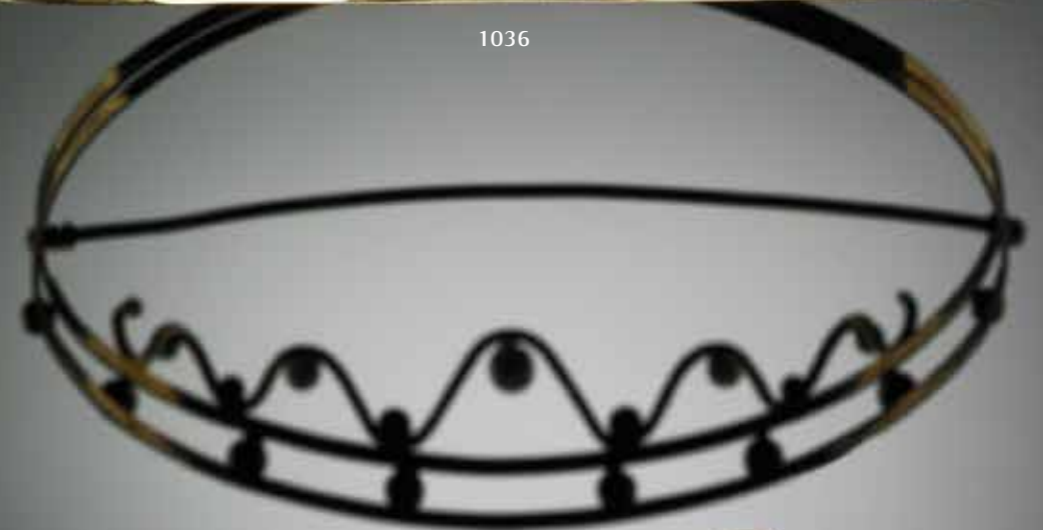
1038

A jewellery set comprising a bracelet and a ring of 14k gold. L. app. 22.5 cm. Ring size 59. Total weight app. 70 g. (2).

DKK 18,000-20,000 / € 2,400-2,700



1036



1037



1038





1039

A long necklace of 18k gold comprising two connectible necklaces. L. app. 195 cm. Total weight app. 100 g. Italy, circa 1960.

DKK 45,000–50,000 / € 6,050–6,700

1040

A ring of 18k white, pink and yellow gold. Size app. 56. Italy, circa 1960.

DKK 10,000–12,000 / € 1,350–1,600

1041

A diamond bracelet set with numerous flanders, princess, oval, pear-shaped and brilliant-cut multi-coloured diamonds weighing a total of app. 2.68 ct., mounted in 18k gold. L. app. 18 cm.

DKK 30,000–40,000 / € 4,050–5,350

1042

A diamond ring in the shape of a starfish set with numerous rose and brilliant-cut diamonds weighing a total of app. 2.35 ct., mounted in 18k gold. Size 54.

DKK 15,000–20,000 / € 2,000–2,700

1043

POMELLATO

A garnet ring "Sirene" in the shape of a star fish set with numerous cabochon and circular-cut rhodolite garnets, mounted in 18k gold. Ref no. C700029848. App. size 51. Weight app. 38 g.

Retail price app. DKK 73,000.

DKK 20,000–25,000 / € 2,700–3,350



1039



1040



1041



1042



1043



1044
A diamond eternity ring set with numerous brilliant-cut diamonds weighing a total of app. 2.02 ct., mounted in 18k gold. Colour: Wesselton (H). Clarity: VVS. Size 56.
Cut quality: Triple excellent-cut. Hearts & Arrows.
DKK 20,000–25,000 / € 2,700–3,350

1045
A pair of diamond ear pendants each set with an old-cut diamond weighing a total of app. 3.73 ct. encircled by numerous brilliant and old-cut diamonds weighing a total of app. 0.95 ct., mounted in 18k gold. Colour: River-Top Cape (D-K). Clarity: VVS-SI. L. app. 3.2 cm. (2)
DKK 80,000–100,000 / € 10,500–13,500

1046
A pair of diamond ear pendants "Creoles" each set with numerous brilliant-cut diamonds weighing a total of app. 1.35 ct., mounted in 18k gold. Colour: Wesselton (H). Clarity: VVS. Diam. app. 2.5 cm. (2)
DKK 12,000–15,000 / € 1,600–2,000

1047
CARTIER
A "Love Me" diamond ring set with numerous brilliant-cut diamonds weighing a total of app. 0.70 ct., mounted in 18k tri-colour gold. Ref. no. 03896. Colour: River-Top Wesselton (D-F). Clarity: VVS. Size 50. DKK 20,000–25,000 / € 2,700–3,350

1048
VAN CLEEF & ARPELS
A pair of cufflinks of 18k gold. Ref. no. 73129. Signed Van Cleef et Arpel, Paris. L. app. 2 cm. Weight app. 11 g. (2)
Accompanied by original case.
DKK 15,000–20,000 / € 2,000–2,700

1049
CARTIER
A "Clash De Cartier" bracelet of 18k rose gold. Signed Cartier. Ref. no. LZN 798. L. app. 20 cm. Weight app. 33 g.
Accompanied by original case.
Retail price app. DKK 74,000.
DKK 20,000–30,000 / € 2,700–4,050





1053

A pair of emerald ear pendants each set with a pear-shaped emerald weighing a total of app. 1.14 ct., a circular-cut sapphire weighing a total of app. 0.33 ct., a circular-cut ruby weighing a total of app. 0.35 ct., faceted rock crystals weighing a total of app. 33.08 ct. encircled by numerous single-cut diamonds weighing a total of app. 1.95 ct., mounted in 14k gold and sterling silver. L. app. 6 cm. (2)

DKK 10,000–15,000 / € 1,350–2,000

1050

A five-strand pearl choker with Akoya pearls with a diamond clasp set with numerous brilliant-cut diamonds weighing a total of app. 0.85 ct., mounted in 18k white gold. Colour: Top Wesselton (F-G). Clarity: VS. L. app. 37 cm. Pearl diam. app. 8.5-9.0 mm.

DKK 40,000–50,000 / € 5,350–6,700

1051

A pair of South Sea pearl and diamond ear pendants each set with a cultured South Sea pearl and numerous brilliant and square-cut diamonds weighing a total of app. 1.30 ct., mounted in 18k white gold. Colour: Top Wesselton-Wesselton (G-H). Clarity: VVS-VS. Pearl diam. app. 11.5 mm. L. app. 5.2 cm. (2)

DKK 15,000–20,000 / € 2,000–2,700

1052

An emerald and diamond ring set with an emerald-cut emerald weighing app. 5.95 ct. encircled by numerous brilliant-cut diamonds weighing a total of app. 2.76 ct., mounted in 18k white gold. Colour: Top Wesselton-Wesselton (G-H). Clarity: SI-P1. Size 58. *DKK 30,000–40,000 / € 4,050–5,350*

1054

An emerald and diamond ring set with an emerald-cut emerald weighing app. 2.75 ct. encircled by numerous trapeze and brilliant-cut diamonds weighing a total of app. 0.35 ct., mounted in platinum. Colour: Wesselton-Top Crystal (H-I). Clarity: SI-P1. Size 52. *DKK 10,000–15,000 / € 1,350–2,000*

1055

A pearl and diamond ring set with a cultured pearl encircled by numerous brilliant-cut diamonds weighing a total of app. 0.70 ct., mounted in 18k white gold. Colour: Top Wesselton-Wesselton (G-H). Clarity: VVS-VS. Pearl diam. app. 12 mm. Size 55.5. *DKK 10,000–15,000 / € 1,350–2,000*

1056

A diamond bracelet set with numerous brilliant-cut diamonds weighing a total of app. 8.25 ct., mounted in 18k white gold. Colour: Top Crystal-Crystal (I-J). Clarity: VVS-VS. L. app. 17 cm. *DKK 50,000–60,000 / € 6,700–8,050*



1050



1051



1052



1053



1054



1055



1056



1057

A pearl and diamond pendant/brooch set with a cultured Mabè pearl encircled by numerous brilliant-cut diamonds weighing a total of app. 4.20 ct., mounted in 14k white gold. Colour: Top Wesselton (F-G). Clarity: VVS. Pearl diam. app. 16.4 cm. L. app. 9.5 cm. 2009. Accompanied by original case and certificate from Peter Kynde with an insurance valuation of DKK 95,000. 2009. DKK 18,000–20,000 / € 2,400–2,700

1058

A pair of aquamarine and diamond ear pendants each set with emerald-cut aquamarines and a brilliant-cut diamond weighing a total of app. 0.40 ct., mounted in 8k gold. Colour: Crystal (J). Clarity: VS. L. app. 4 cm. (2) DKK 10,000–15,000 / € 1,350–2,000

1059

An opal and diamond brooch set with an oval cabochon opal encircled by numerous brilliant-cut diamonds, mounted in 14k white gold. L. app. 3.0 x 2.5 cm. DKK 10,000 / € 1,350

1060

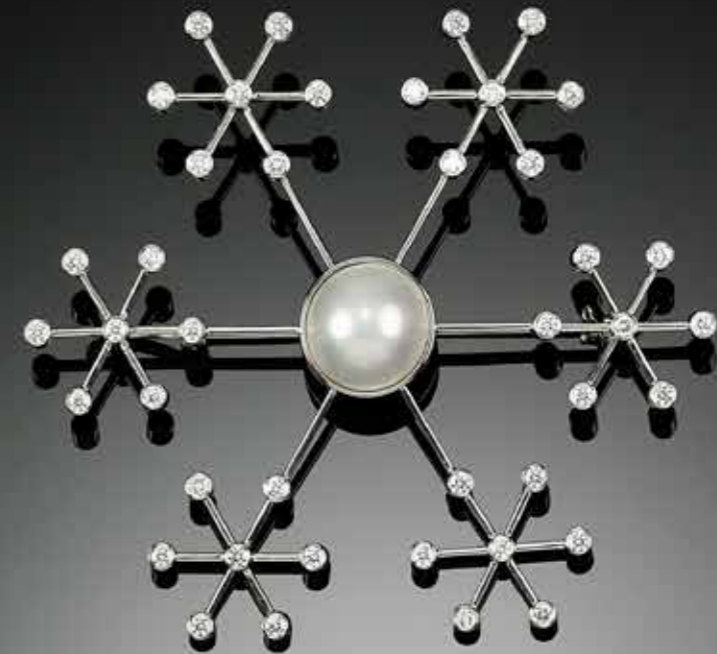
An aquamarine and diamond ring set with an emerald-cut aquamarine encircled by numerous brilliant-cut diamonds, mounted in 18k white gold. Colour: Wesselton (H). Clarity: SI-P1. Size 56. England, circa 2000. DKK 10,000–15,000 / € 1,350–2,000

1061

A turquoise and diamond ring set with a cabochon turquoise encircled by numerous rose-cut diamonds weighing a total of app. 2.70 ct., mounted in 18k white gold. Colour: Wesselton-Top Crystal (H-I). Clarity: VS-SI. Size 58. DKK 20,000–25,000 / € 2,700–3,350

1062

H. WALTER - RASMUSSEN
A diamond brooch set with numerous brilliant-cut white, yellow and green diamonds weighing a total of app. 2.70 ct., mounted in 14k white gold. L. app. 4.5 x 4.5 cm. 1966. Accompanied by case and valuation from Københavns Guldsmedelaug. 1966. DKK 15,000–20,000 / € 2,000–2,700



1057



1058



1060



1059



1061



1062



1063

A three-strand pearl necklace with cultured pearls with a pearl and diamond clasp set with a cultured Mabe pearl encircled by numerous brilliant and old-cut diamonds weighing a total of app. 2.10 ct., mounted in 8k white gold. Colour: Top Crystal-Crystal (I-J). Clarity: VS-P1. Pearl diam. app. 16.8 mm and 6.0-6.4 mm. L. app. 40 cm. Circa 1940-50.

DKK 10,000-15,000 / € 1,350-2,000

1064

A pair of diamond ear studs each set with numerous brilliant-cut diamonds weighing a total of app. 2.80 ct., mounted in 18k white gold. Colour: Top Wesselton (G). Clarity: VVS. Diam. app. 12 mm. (2)

DKK 30,000-35,000 / € 4,050-4,700

1065

A pearl and diamond jewellery set comprising a ring and a pair of ear clips each set with a cultured pearl encircled by numerous brilliant-cut diamonds weighing a total of app. 3.00 ct., mounted in platinum and 18k white gold. Colour: Wesselton-Crystal (H-J). Clarity: VS-SI. Pearl diam. app. 9.5-10.0 mm. L. app. 1.3 cm. Size 55. (3)

DKK 25,000-30,000 / € 3,350-4,050

1066

A Belle Époque diamond solitaire ring set with an old-cut diamond weighing app. 3.00 ct., mounted in platinum. Colour: Cape (M-N). Clarity: SI. Size 52.5. Circa 1900-10.

DKK 80,000-100,000 / € 10,500-13,500

1067

A pearl and diamond brooch set with cultured pearls and old and baguette-cut diamonds, mounted in 14k white gold. Pearl diam. app. 4.7-4.9 mm. L. app. 5 x 4 cm. Weight app. 27 g. Circa 1950.

Accompanied by case.

DKK 10,000-12,000 / € 1,350-1,600

1068

A diamond bangle set with numerous old-cut diamonds weighing a total of app. 2.20 ct., mounted in 10k gold and silver. Colour: Top Crystal-Crystal (I-J). Clarity: VS-P1. Diam. app. 6 cm. Weight app. 19 g. Circa 1900.

DKK 15,000-20,000 / € 2,000-2,700



1063



1064



1065



1066



1067



1068



1069
A pair of diamond and pearl ear pendants each set with numerous rose-cut diamonds weighing a total of app. 0.65 ct. and seed pearls, mounted in 14k gold. L. app. 2 cm. (2) *DKK 10,000 / € 1,350*

1070
An emerald and diamond necklace set with oval, pear-shaped, circular-cut and cabochon presumably Colombian emeralds weighing a total of app. 7.00 ct. encircled by numerous old, single and brilliant-cut diamonds, mounted in 14k and 18k gold and silver. L. app. 38 cm. Circa 1890-1900. *DKK 90,000-100,000 / € 12,000-13,500*

1071
An emerald and diamond ring set with an emerald-cut emerald weighing app. 1.25 ct. flanked by numerous marquise and single-cut diamonds weighing a total of app. 0.40 ct., mounted in 18k gold and white gold. Size 52. *DKK 12,000-15,000 / € 1,600-2,000*

1072
A diamond brooch in the shape of a star set with numerous old and rose-cut diamonds weighing a total of app. 1.05 ct., mounted in 14k gold. L. app. 3.5 cm. Circa 1900. *DKK 10,000-12,000 / € 1,350-1,600*

1073
A diamond brooch set with numerous old-cut diamonds, mounted in 14k gold and silver. No clasp. L. app. 4,3 x 3,5 cm. Weight app. 17 g. Circa 1890. *DKK 10,000-15,000 / € 1,350-2,000*

1074
An emerald and diamond bracelet set with emerald-cut emeralds weighing a total of app. 25.97 ct. and single-cut diamonds weighing a total of app. 13.42 ct., mounted in 18k gold and silver. L. app. 19.0 cm. W. app. 2.5 cm. Circa 1890-1900. *DKK 20,000-30,000 / € 2,700-4,050*





1077

An emerald and ruby brooch in the shape of a Night Butterfly set with an oval and a pear-shaped emerald weighing a total of app. 2.20 ct., circular-cut rubies weighing a total of app. 0.05 ct. and single-cut diamonds weighing a total of app. 0.45 ct., mounted in silver and 14k gold. L. app. 4.2-2.8 cm.

DKK 10,000-12,000 / € 1,350-1,600

1075

A ruby and diamond brooch in the shape of a Night Butterfly set with circular-cut rubies and numerous rose-cut diamonds, mounted in 18k gold and silver. L. app. 2.5 cm. Weight app. 7 g.

DKK 10,000-12,000 / € 1,350-1,600

1076

BUCCELLATI

A brooch in the shape of a cockatoo of 18k gold. Signed Buccellati. Ref. no. N2946. L. app. 5 cm. Weight app. 10 g. Circa 1950.

Accompanied by original case and certificate.

DKK 12,000-15,000 / € 1,600-2,000

1078

HANCOCKS & CO.

A pair of diamond brooches in the shape of dancing fish set with enamel and brilliant-cut diamonds, mounted in 18k gold and white gold. Signed Hancock's. L. app. 5.5 cm. Total weight app. 62 g. Circa 1950. (2)

DKK 40,000-50,000 / € 5,350-6,700

1079

A moonstone and diamond brooch in the shape of a beetle set with a cabochon moonstone, rose-cut diamonds, an oval-cut ruby and zavorite garnets, mounted in 14k gold and partly gilded silver. L. app. 5.0 x 4.5 cm.

DKK 12,000-15,000 / € 1,600-2,000



1075



1076



1077



1078



1079



1080

An emerald and diamond ring set with a rectangular step-cut emerald weighing app. 2.60 ct., encircled by numerous trapeze-cut diamonds weighing a total of app. 3.00 ct., mounted in platinum. Colour: Top Wesselton (F-G). Clarity: VVS-VS. Size 55. Accompanied by Cisgem report no. 21294. 2022.
 DKK 60,000–70,000 / € 8,050–9,400

1081

An emerald and diamond ring set with an emerald-cut emerald weighing app. 5.69 ct. encircled by numerous brilliant-cut diamonds weighing a total of app. 1.86 ct., mounted in 18k white gold. Colour: Top Wesselton-Top Crystal (G-I). Clarity: SI-P1. Size app. 54.
 DKK 30,000–40,000 / € 4,050–5,350

1082

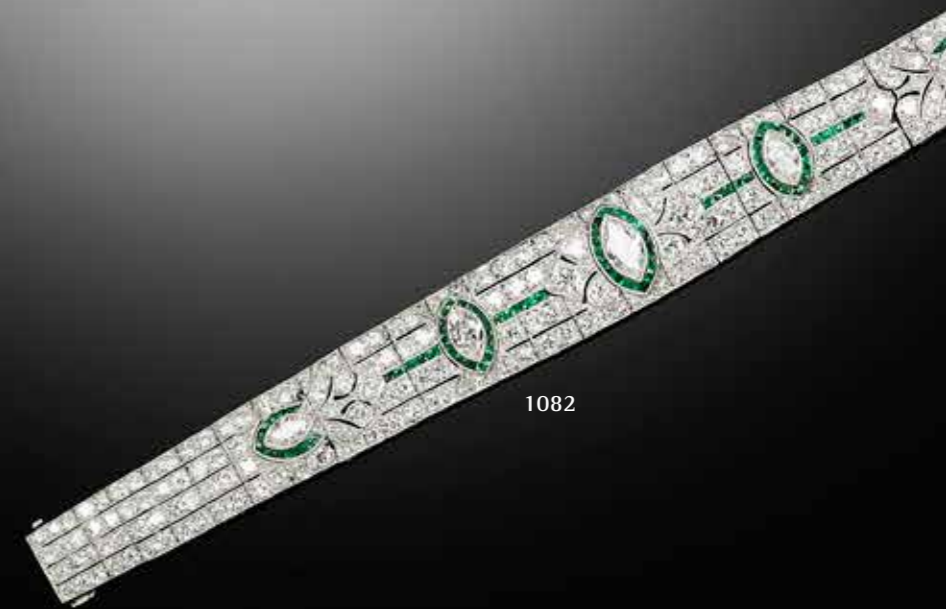
An Art Deco emerald and diamond bracelet set with numerous square-cut emeralds, marquise-cut diamonds weighing a total of app. 3.50 ct. and old-cut diamonds weighing a total of app. 12.00 ct., mounted in platinum. Colour: Wesselton-Top Crystal (H-I). Clarity: VS-SI. L. app. 17.7 cm. W. app. 1.2–1.7 cm. Weight app. 37 g. Circa 1920–30.
 DKK 200,000–250,000 / € 27,000–33,500



1081



1080



1082



1083

A diamond eternity ring set with numerous emerald-cut diamonds weighing a total of app. 9.00 ct., mounted in 14k white gold. Colour: Top Wesselton (F-G). Clarity: VVS. App. size 50.

Accompanied by insurance valuation by Ruben Svart of DKK 385,000. 2023.

DKK 80,000–100,000 / € 10,500–13,500

1084

A diamond solitaire ring set with an emerald-cut light yellow diamond weighing app. 5.00 ct., mounted in 18k white gold. Clarity: VVS. Size 50.

DKK 100,000–150,000 / € 13,500–20,000

1085

A diamond ring set with an emerald-cut diamond weighing app. 4.37 ct. flanked by numerous brilliant-cut diamonds weighing a total of app. 1.80 ct., mounted in 18k white gold. Colour: Wesselton-Top Crystal (H-I). Clarity: VS-SI. App. size 53.5.

DKK 100,000–125,000 / € 13,500–17,000

1086

A diamond bracelet set with numerous square-cut diamonds weighing a total of app. 13.00 ct., mounted in platinum. Colour: Top Wesselton (F-G). Clarity: VVS. L. app. 19 cm. Weight app. 28.5 g.

DKK 100,000–125,000 / € 13,500–17,000



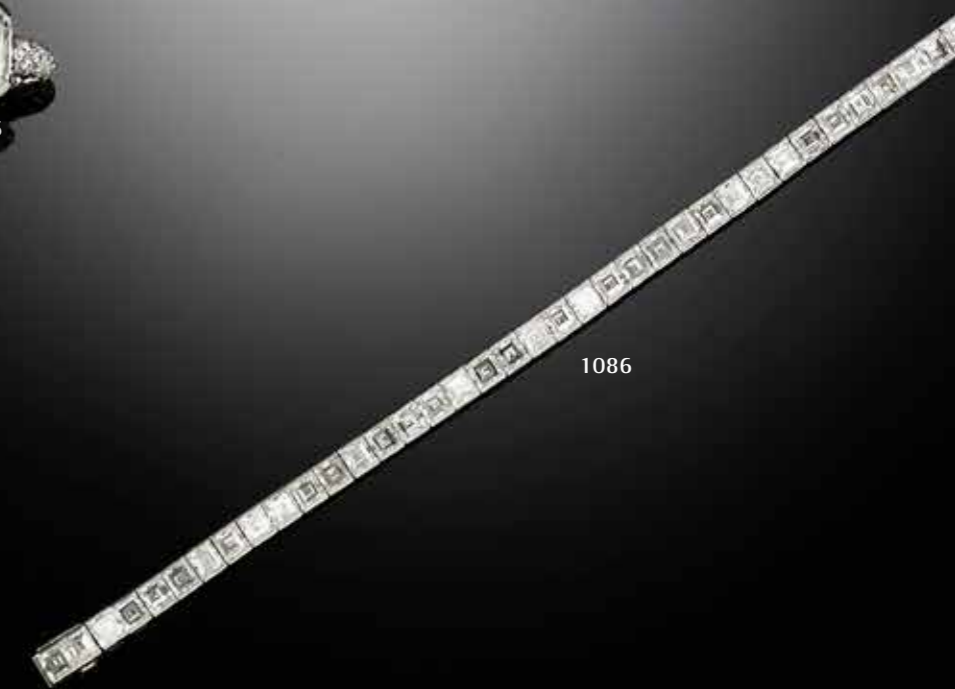
1083



1084



1085



1086



1087
CHOPARD

A necklace with a diamond pendant "Happy Diamonds" with brilliant-cut diamonds weighing a total of app. 0.28 ct., mounted in 18k white gold. Colour: Top Wesselton (F-G). Clarity: VS. Ref. no. 2111463. Serial no. 79/3449-20. L. app. 42 cm. Weight app. 49 g.

Accompanied by original case and certificate.

DKK 30,000–40,000 / € 4,050–5,350

1088
CHOPARD

A necklace with a diamond pendant "Happy Diamonds Heart" set with numerous brilliant-cut diamonds weighing a total of app. 0.51 ct., mounted in 18k white gold. Colour: Top Wesselton (F-G). Clarity: VS. Ref. no. 795746. Serial no. 3243510. L. app. 42 cm.

Accompanied by original case.

DKK 25,000–30,000 / € 3,350–4,050

1089
CHOPARD

A pair of ear pendants "Ice Cube" of 18k white gold. Ref. no. 847407. Serial no. 3137706. L. app. 2 cm. Total weight app. 14 g. 2008. (2)

Accompanied by original certificate.

DKK 10,000–12,000 / € 1,350–1,600

1090
CHOPARD

A diamond ring "Ice Cube" set with brilliant-cut diamonds weighing a total of app. 0.12 ct., mounted in 18k white gold. Ref. no. 823790. Serial no. 3160418. W. app. 0.8 cm. Weight app. 11 g. Size 53.

Accompanied by original certificate.

DKK 12,000–15,000 / € 1,600–2,000

1091
CHOPARD

A diamond ring "Happy Diamonds" set with numerous brilliant-cut diamonds weighing a total of app. 0.53 ct., mounted in 18k white gold. Colour: Top Wesselton (F-G). Clarity: VS. Ref. no. 826682. Serial no. 3142914. App. size 54.

DKK 15,000–18,000 / € 2,000–2,400

1092
CHOPARD

A diamond wristwatch of 18k white gold. Model Ice Cube. Quartz movement. Dial set with numerous single-cut diamonds and blued steel hands. Integrated Chopard bracelet of 18k white gold with folding clasp. Circumference app. 14.5 cm. Watch diameter 25 x 25 mm. 2000s.

Accompanied by Chopard box.

DKK 60,000–80,000 / € 8,050–10,500





1093
A diamond brooch set with numerous brilliant-cut diamonds weighing a total of app. 7.10 ct., mounted in 18k white gold. Colour: Top Wesselton-Wesselton (G-H). Clarity: VVS-VS. L. app. 4.3 cm.
DKK 25,000–30,000 / € 3,350–4,050

1094
A pair of diamond ear pendants each set with numerous brilliant-cut diamonds weighing a total of app. 3.80 ct., mounted in 18k white gold. Colour: Top Wesselton (F-G). Clarity: VS-SI. L. app. 5.5 cm. (2)
DKK 25,000–30,000 / € 3,350–4,050

1095
A Burma ruby and diamond ring set with a cushion-cut natural Burma ruby weighing app. 2.20 ct. encircled by numerous brilliant-cut diamonds weighing a total of app. 6.00 ct., mounted in platinum. Size 55.
Accompanied by a copy of IGI report no. 48907 indicating, "No indications of treatments". 2020.
DKK 200,000–250,000 / € 27,000–33,500

1096
A diamond bracelet set with numerous old-cut diamonds weighing a total of app. 11.23 ct., mounted in 18k white gold. Colour: Top Wesselton-Crystal (G-J). Clarity: VS-P1. L. app. 18 cm.
DKK 80,000–100,000 / € 10,500–13,500





1097

A pair of diamond ear pendants each set with two old-cut diamonds weighing a total of app. 4.95 ct., mounted in 18k white gold. Colour: Top Crystal-Crystal (I-J). Clarity: P1. Diam. app. 5.0 and 9.7 mm. L. app. 2.5 cm. (2)

DKK 60,000–70,000 / € 8,050–9,400

1098

A coral and topaz necklace set with coral beads and circular-cut topazes with a coral and diamond pendant set with numerous coral beads, polished onyx and numerous brilliant-cut diamonds weighing a total of app. 0.84 ct., mounted in 18k white gold. L. pendant app. 9 cm. L. necklace app. 90 cm. (2)

DKK 15,000–20,000 / € 2,000–2,700

1099

A diamond brooch set with old and rose-cut white and natural coloured diamonds, mounted in 14k gold and palladium. L. app. 4.5 cm. Circa 1940–50.

DKK 10,000–15,000 / € 1,350–2,000

1100

A diamond ring set with an oval brilliant-cut natural light pink diamond weighing 0.36 ct. encircled by numerous brilliant-cut white diamonds weighing a total of app. 0.19 ct., mounted in 18k white and pink gold. Colour: River (D). Clarity: VVS-VS. App. size 53.5.

Accompanied by GIA report no. 5151465181. 2013.

Cut quality of white diamonds: Triple Excellent-cut. Hearts Et Arrows. DKK 15,000–20,000 / € 2,000–2,700

1101

A diamond ring set with a cushion-cut champagne coloured diamond weighing app. 2.41 ct. encircled and flanked by numerous brilliant-cut white diamonds weighing a total of app. 0.47 ct., mounted in 14k white gold. Clarity center diamond: VS2. Grading of other diamonds. Colour: Top Wesselton-Wesselton (G-H). Clarity: VS2. Size 52.5. 2018.

Retail price DKK. 139,000. 2018.

Accompanied by IGL diamond report no. J80689045/L. 2015. DKK 35,000–40,000 / € 4,700–5,350

1102

A diamond ring set with a brilliant-cut champagne coloured diamond weighing app. 1.73 ct. flanked by numerous brilliant-cut white diamonds weighing a total of app. 0.27 ct., totalling app. 2.00 ct., mounted in 18k white gold. Clarity center stone: P1. Grading of other stones. Colour: Top Crystal-Crystal (I-J). Size 55. DKK 40,000–50,000 / € 5,350–6,700

1103

A diamond bracelet set with numerous brilliant-cut diamonds weighing a total of app. 11.00 ct., mounted in 18k white gold. Colour: Top Wesselton-Top Crystal (G-I). Clarity: VVS-VS. L. app. 19.5 cm.

DKK 100,000–125,000 / € 13,500–17,000





1104

A diamond necklace set with numerous marquise, pear and brilliant-cut diamonds weighing a total of app. 11.23 ct., mounted in 18k white gold. Colour: Wesselton-Crystal (H-J). Clarity: VVS-VS. L. app. 50 cm. Antwerp, circa 2016.

Cut-grade of brilliant-cut diamonds: Triple excellent-cut. Hearts and arrows.

DKK 60,000–80,000 / € 8,050–10,500

1105

An emerald and diamond ring set with a rectangular-cut Colombian emerald weighing app. 1.70 ct. encircled by marquise-cut diamonds weighing a total of app. 2.50 ct., mounted in platinum. Colour: Wesselton (H). Clarity: VVS. Size 52.

Accompanied by Gisgem report no. 16422 indicating "Minor clarity enhancements and Colombia". 2020.

DKK 60,000–70,000 / € 8,050–9,400

1106

A pair of South Sea pearl and diamond ear pendants each set with a cultured South Sea pearl and numerous trapeze and brilliant-cut diamonds weighing a total of app. 1.80 ct., mounted in 18k white gold. Colour: Top Wesselton-Wesselton (G-H). Clarity: VVS-VS. Pearl diam. app. 16.0-16.5 mm. L. app. 7 cm. (2)

DKK 30,000 / € 4,050

1107

An Art Deco emerald and diamond bracelet set with numerous baguette and fancy-cut emeralds and old-cut diamonds, mounted in platinum. Colour: Wesselton-Top Crystal (H-I). Clarity: VS-P1. L. app. 18 cm. Circa 1920–30.

DKK 20,000–30,000 / € 2,700–4,050



1104



1106



1105



1107



1108

An emerald and diamond ring set with a cushion-cut vivid green emerald weighing app. 13.43 ct. encircled by brilliant-cut diamonds weighing a total of app. 1.48 ct., mounted in 18k white gold. Colour: Top Wesselton-Wesselton (G-H). Clarity: VS-SI. Size 52.

Accompanied by a report from C. Dunaigre indicating "Indications of minor clarity enhancements". "Natural emeralds are commonly clarity enhanced". 2021.

DKK 100,000–150,000 / € 13,500–20,000

1109

A pair of emerald and diamond ear pendants in the shape of leaves each set with numerous square-cut emeralds weighing a total of app. 9.89 ct. and numerous brilliant-cut diamonds weighing a total of app. 0.60 ct., mounted in 18k partly black rhodium plated white gold. L. app. 7.5 cm. (2)

DKK 40,000–50,000 / € 5,350–6,700

1110

A diamond bracelet set with numerous brilliant-cut diamonds weighing a total of app. 3.20 ct., mounted in platinum. Colour: Wesselton-Top Crystal (H-I). Clarity: SI-P1. L. app. 18.5 cm. *DKK 30,000 / € 4,050*





1111

A ten-strand pearl necklace with cultured freshwater pearls and a sapphire and diamond clasp set with numerous square and pear-shaped sapphires and brilliant-cut diamonds, mounted in 14k gold. Pearl diam. app. 4-5 mm. L. app. 42 cm.

Accompanied by case.

DKK 10,000-12,000 / € 1,350-1,600

1112

An Art Deco sapphire and diamond brooch set with square-cut synthetic sapphires and numerous old and rose-cut diamonds weighing a total of app. 1.25 ct., mounted in platinum and 14k gold. Colour: Top Wesselton-Wesselton (G-H). Clarity: Sl. L. app. 4.5 cm. Circa 1920-30.

DKK 10,000-12,000 / € 1,350-1,600

1113

V. WOLLNY

A diamond ring set with numerous old and single-cut diamonds weighing a total of app. 1.45 ct., mounted in 14k white gold. Colour: Crystal-Top Cape (J-L). Clarity: VS-P1. App. size 54. App. 1930-40.

DKK 10,000-15,000 / € 1,350-2,000

1114

A sapphire and diamond ring set with an Australian square-cut green sapphire weighing app. 5.00 ct. flanked by two fancy-cut diamonds weighing a total of app. 1.20 ct., mounted in 18k white gold. Colour: Top Wesselton (F-G). Clarity: VS. Size 54.

DKK 35,000-40,000 / € 4,700-5,350

1115

An Art Deco diamond ring set with numerous brilliant-cut diamonds weighing a total of app. 1.20 ct., mounted in platinum. Colour: Wesselton-Top Crystal (H-I). Clarity: VS. Size 54. Circa 1920-30.

DKK 10,000-15,000 / € 1,350-2,000

1116

A sapphire and diamond bracelet set with numerous oval-cut sapphires weighing a total of app. 10.70 ct. and numerous brilliant-cut diamonds weighing a total of app. 9.60 ct., mounted in 18k white gold. Colour: Wesselton-Top Crystal (H-I). Clarity: VS-Sl. L. app. 18.5 cm.

DKK 40,000-50,000 / € 5,350-6,700



1111



1112



1113



1114



1115



1116



1117

A sapphire and diamond ring set with a cabochon star sapphire weighing app. 23.50 ct. encircled by numerous trapeze and brilliant-cut diamonds weighing a total of app. 1.67 ct., mounted in platinum. Colour: Wesselton-Top Crystal (H-I). Clarity: VS-P1. Size 52. DKK 40,000-50,000 / € 5,350-6,700

1118

Two diamond brooches each set with numerous single, brilliant and old-cut diamonds weighing a total of app. 6.30 ct., mounted in platinum. Colour: Wesselton-Top Crystal (H-I). Clarity: VS-P1. L. app. 5 cm. Circa 1940-50. (2)

DKK 60,000-80,000 / € 8,050-10,500

1119

A diamond bracelet set with numerous brilliant, baguette and single-cut diamonds weighing a total of app. 9.90 ct., mounted in platinum. Colour: Top Wesselton-Top Crystal (G-I). Clarity: VVS-SI. L. app. 17.5 cm. DKK 100,000-125,000 / € 13,500-17,000





1120

A diamond ring set with an oval old-cut diamond weighing app. 4.23 ct. flanked by brilliant and marquise-cut diamonds, mounted in platinum. Colour: Top Wesselton (G). Clarity: VS. Size 51.5. Circa 1930-40.

Accompanied by IGI report no. 53971. 2023. DKK 300,000-400,000 / € 40,500-53,500





1121

A diamond ring set with four brilliant-cut diamonds weighing a total of app. 2.40 ct., mounted in 18k white gold. Colour: Wesselton-Top Crystal (H-I). Clarity: VS-SI. Size app. 55.

DKK 20,000–25,000 / € 2,700–3,350

1122

A pair of diamond ear pendants each set with two brilliant-cut diamonds weighing a total of app. 2.42 ct. and numerous marquise and baguette-cut diamonds weighing a total of app. 3.58 ct., mounted in 18k white gold. Colour: Top Wesselton (F-G). Clarity: VVS-SI. L. app. 4.8 cm. (2)

DKK 50,000–60,000 / € 6,700–8,050

1123

A sapphire and diamond brooch set with a hexagonal presumably natural Ceylon sapphire weighing app. 10.00 ct. encircled by numerous brilliant and marquise-cut diamonds weighing a total of app. 5.00 ct., mounted in 14 and 18k white gold. Colour: Top Crystal-Crystal (I-J). Clarity: Top Crystal-Crystal (I-J). Clarity: VS-P1. L. app. 4.5 x 4.5 cm. Circa 1950-60.

Accompanied by case.

DKK 20,000–30,000 / € 2,700–4,050

1124

A sapphire and diamond bracelet set with numerous oval-cut sapphires and brilliant-cut diamonds, mounted in 18k white gold. Weight app. 30 g. L. app. 20 cm.

DKK 10,000–15,000 / € 1,350–2,000



1121



1122



1123



1124



1128

A diamond ring set with numerous brilliant-cut diamonds weighing a total of app. 3.00 ct., mounted in 18k white gold. Colour: Top Wesselton-Wesselton (G-H). Clarity: VVS-VS. Size 56.

DKK 15,000–20,000 / € 2,000–2,700

1129

A diamond ring set with a fancy-cut fancy yellow diamond weighing app. 2.03 ct. encircled by numerous brilliant-cut diamonds weighing a total of app. 2.60 ct., mounted in 18k white gold. Colour: River (D). Clarity: VVS. Size 54.

Cut quality: Triple Excellent-cut. Hearts & Arrows.

DKK 50,000–60,000 / € 6,700–8,050

1130

A diamond ring set with numerous brilliant-cut diamonds weighing a total of app. 1.50 ct., mounted in 14k white gold. Colour: Wesselton (H). Clarity: VS. Size 55. Size 55.

DKK 10,000–15,000 / € 1,350–2,000

1131

A diamond bracelet set with numerous princess-cut diamonds weighing a total of app. 11.25 ct., mounted in 18k white gold. Colour: Top Wesselton-Wesselton (G-H). Clarity: SI-P1. L. app. 18 cm.

DKK 75,000 / € 10,000

1125

A long diamond necklace set with numerous brilliant-cut diamonds weighing a total of app. 2.11 ct., mounted in 18k white gold. Colour: Wesselton-Top Crystal (H-I). Clarity: SI-P1. L. app. 120 cm.

DKK 20,000–30,000 / € 2,700–4,050

1126

A pair of diamond ear pendants each set with numerous brilliant-cut diamonds weighing a total of app. 15.00 ct., mounted in 18k white gold. Colour: Wesselton-Top Crystal (H-I). Clarity: SI-P1. L. app. 2.5 cm. Total weight app. 26 g. (2)

DKK 40,000–50,000 / € 5,350–6,700

1127

A pair of diamond ear studs each set with a brilliant-cut diamond weighing a total of app. 2.05 ct., mounted in 18k white gold. Colour: River-Top Wesselton (E-F). Clarity: P1. Diam. app. 6.5 mm. (2)

DKK 40,000–50,000 / € 5,350–6,700



1125



1126



1127



1128



1129



1130



1131



1132
OLE LYNGGAARD

A "Fairytale" clasp set with a cabochon aquamarine and two brilliant-cut diamonds weighing a total of app. 0.14 ct., mounted in 18k gold and a six-strand necklace of 14k gold. Colour: Top Wesselton (F-G). Clarity: VS. L. app. 44 cm. (2)
Accompanied by case.

DKK 10,000–15,000 / € 1,350–2,000

1133
OLE LYNGGAARD

A jewellery set comprising a six-strand necklace and bracelet of 14k gold and oxidized sterling silver with two "Rustic" clasps set with brilliant-cut diamonds weighing a total of app. 0.14 ct., mounted in 14k gold. Diam. app. 10 and 14 mm. Colour: Wesselton (H). Clarity: VS. L. incl. clasp app. 17 and 42 cm. (4)

DKK 10,000–15,000 / € 1,350–2,000

1134
OLE LYNGGAARD

Three diamond eternity "Love Bands" rings each set with numerous brilliant-cut diamonds weighing a total of app. 1.23 ct., mounted in 18k gold, white and pink gold. Colour: Top Wesselton (F-G). Clarity: VS. Size 49-50. Designed by Charlotte Lynggaard. (3)
Retail price app. DKK 74,799. Each ring DKK 24,900..
Accompanied by three original cases.

DKK 25,000–30,000 / € 3,350–4,050

1135
OLE LYNGGAARD

A large "Snakes" ring set with brilliant-cut diamonds weighing a total of app. 0.02 ct., mounted in 18k gold. Colour: Top Wesselton (F-G). Clarity: VS. Size 53.

Retail price DKK 47,900.

Accompanied by original case.

DKK 15,000–18,000 / € 2,000–2,400

1136

A diamond bangle set with numerous brilliant-cut diamonds weighing a total of app. 0.40 ct., mounted in 18k gold. Colour: Wesselton (H). Clarity: VVS-VS. Diam. app. 5.5 cm.

Cut quality: Triple excellent-cut, Hearts & Arrows.

DKK 10,000–15,000 / € 1,350–2,000





1137
OLE LYNGGAARD

A Tahiti pearl necklace with cultured Tahiti pearls and a diamond "Flower" clasp set with brilliant-cut diamonds weighing a total of app. 0.06, mounted in 18k white gold. Colour: Top Wesselton (G). Clarity: VS. Pearl diam. app. 9.3-12.2 mm. L. app. 49.0 cm. Design Charlotte Lynggaard.

DKK 10,000–15,000 / € 1,350–2,000

1138

A pair of diamond ear pendants "Creoles" each set with numerous brilliant-cut diamonds weighing a total of app. 1.57 ct., mounted in 18k white gold. Colour: Wesselton-Top Crystal (H-I). Clarity: SI-P1. Diam. app. 3.5 cm. (2)

DKK 15,000–20,000 / € 2,000–2,700

1139

A pair of diamond ear studs each set with a brilliant-cut diamond weighing a total of app. 2.20 ct., mounted in 18k white gold. Colour: Top Wesselton (F). Colour: VS1. (2)

Accompanied by GIA reports nos. 5171818226 and 2191899588. 2016.

Fluorescence: None.

DKK 80,000–100,000 / € 10,500–13,500

1140

A diamond eternity ring set with numerous oval brilliant-cut diamonds weighing a total of app. 5.58 ct., mounted in platinum. Colour: Wesselton-Crystal (H-J). Clarity: VVS. App. size 56.

DKK 70,000–80,000 / € 9,400–10,500

1141

A diamond solitaire ring set with an old mine-cut diamond weighing app. 1.82 ct., mounted in 18k white gold. Colour: Top Cape (K). Clarity: SI. Size 53.

DKK 50,000–60,000 / € 6,700–8,050

1142

A diamond bangle set with numerous brilliant-cut diamonds weighing a total of app. 8.15 ct., mounted in 18k white gold. Colour: Top Wesselton-Wesselton (G-H). Clarity: VVS-VS. Diam. app. 6 cm. Weight app. 38 g.

DKK 20,000–30,000 / € 2,700–4,050



1137



1138



1139



1140



1141



1142



1143
A diamond necklace set with a brilliant-cut diamond weighing app. 0.74 ct., mounted in 18k white gold. Colour: Top Wesselton (F). Clarity: VVS. L. app. 42 cm.
DKK 18,000–20,000 / € 2,400–2,700

1144
A pair of diamond ear studs each set with a brilliant-cut diamond weighing a total of app. 1.00 ct., mounted in 18k white gold. Colour: Wesselton (H). Clarity: VS-SI. Diam. app. 6 mm. (2)
DKK 15,000–20,000 / € 2,000–2,700

1145
A pair of diamond ear studs each set with a brilliant-cut diamond weighing a total of app. 2.08 ct., mounted in 18k white gold. Colour: River (E). Clarity: VS1. (2)
Accompanied by original case, Hartmann's certificate no. 29051528023, GIA certificates nos. 5193667728 and 1199376630. 2015.
DKK 100,000–150,000 / € 13,500–20,000

1146
A diamond brooch set with numerous old and baguette-cut diamonds weighing a total of app. 7.70 ct., mounted in 14k white gold. Colour: Wesselton-Top Crystal (H-I). Clarity: VS-SI. L. app. 5.8 x 3.8 cm. Weight app. 22 g.
DKK 25,000–30,000 / € 3,350–4,050

1147
HARTMANN'S
A diamond bracelet set with numerous brilliant-cut diamonds weighing a total of app. 2.26 ct., mounted in 18k white gold. Colour: Top Wesselton (F-G). Clarity: VVS-VS. Diam. app. 6 mm.
Accompanied by original case and insurance valuation by Ruben Svart of DKK 83,300. 2017.
DKK 15,000–20,000 / € 2,000–2,700

1148
A diamond bracelet set with numerous brilliant-cut diamonds weighing a total of app. 8.43 ct., mounted in 18k white gold. Colour: Top Wesselton (F). Clarity: VS. L. app. 18 cm.
Cut quality: Ideal-cut. Hearts & Arrows.
DKK 80,000–100,000 / € 10,500–13,500



1143



1144



1145



1146



1147



1148



1149

A Belle Époque diamond pendant set with numerous old and rose-cut diamonds, mounted in platinum and gold. Colour: Top Crystal-Crystal (I-J). Clarity: VS-P1. L. app. 40 cm.

Originally a brooch.

DKK 10,000–15,000 / € 1,350–2,000

1150

An aquamarine and diamond necklace set with a cushion-cut aquamarine encircled by numerous single-cut diamonds and seed pearls, mounted in platinum and palladium. Pearl diam. app. 2.6–2.7 mm. L. app. 55 cm. Circa 1930–40.

DKK 10,000–12,000 / € 1,350–1,600

1151

A sapphire and diamond ring set with a modified square-cut natural sapphire weighing app. 7.50 ct. flanked by numerous brilliant-cut diamonds weighing a total of app. 0.30 ct., mounted in 18k white gold. Colour: Top Crystal (I). Clarity: VS. Size 59. Sweden.

DKK 20,000–30,000 / € 2,700–4,050

1152

A diamond ring set with numerous old-cut diamonds weighing a total of app. 1.20 ct., mounted in platinum. Colour: Crystal-Top Cape (J-K). Clarity: SI-P1. Size 56. *DKK 10,000–15,000 / € 1,350–2,000*

1153

An Art Deco diamond brooch set with numerous old-cut diamonds weighing a total of app. 3.50 ct., mounted in platinum. Colour: Wesselton-Top Crystal (H-I). Clarity: VS. L. app. 7.3 cm. Circa 1920–30.

DKK 20,000–25,000 / € 2,700–3,350

1154

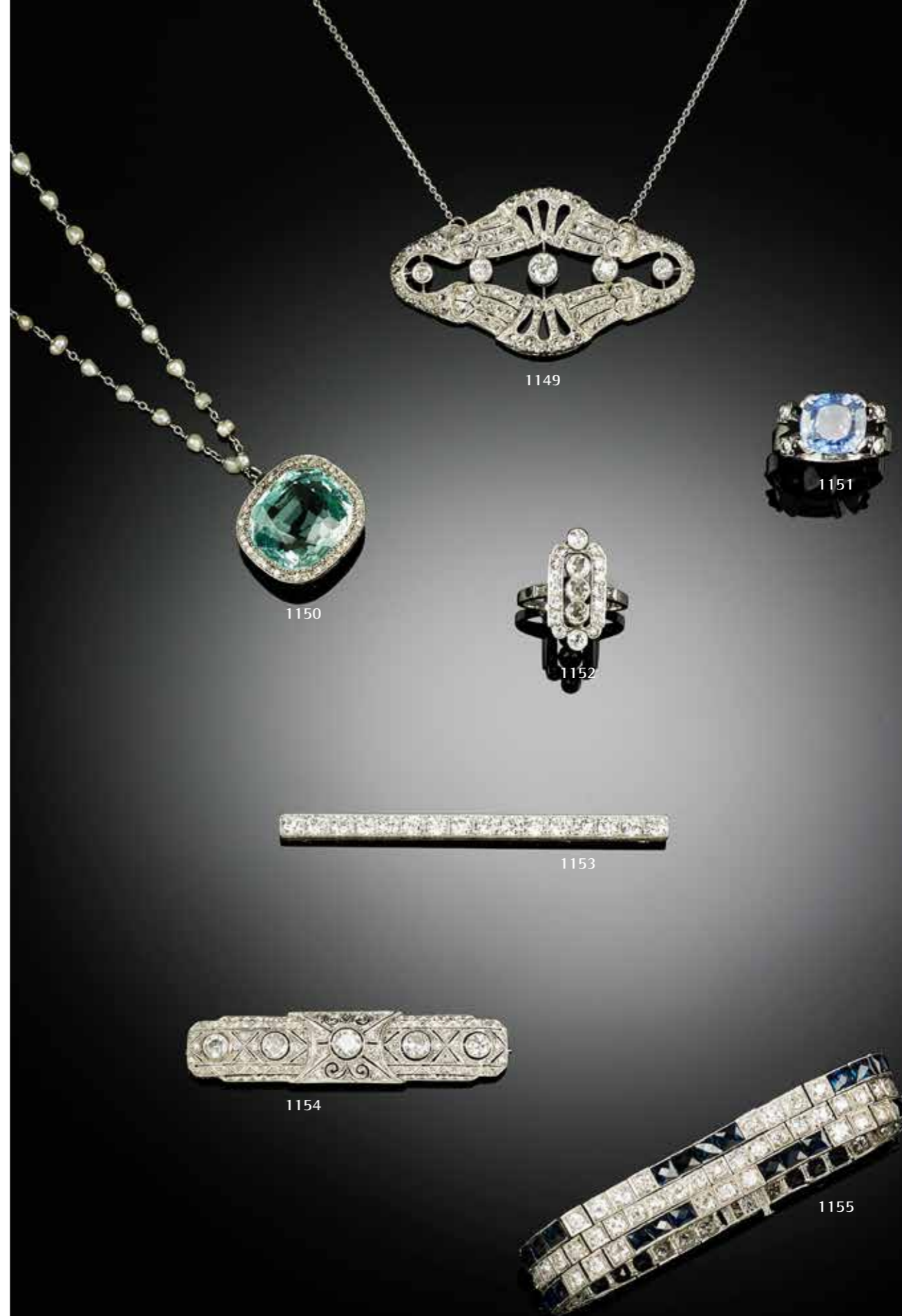
A Belle Époque diamond brooch set with numerous old and rose-cut diamonds weighing a total of app. 1.55 ct., mounted in platinum and silver. Colour: Wesselton-Crystal (H-J). Clarity: SI-P1. L. app. 6 cm. Circa 1900.

DKK 15,000–18,000 / € 2,000–2,400

1155

An Art Deco sapphire and diamond bracelet set with partly synthetic fancy-cut sapphires and numerous old-cut diamonds weighing a total of app. 9.00 ct., mounted in platinum. Colour: Wesselton-Top Crystal (H-I). Clarity: VS-P1. L. app. 17.5 cm. W. app. 1.3 cm. Weight app. 53 g. Circa 1920–30.

DKK 100,000–125,000 / € 13,500–17,000





1156
EVALD NIELSEN
 A necklace of 14k gold. L. app. 41 cm. Weight app. 137 g. *DKK 25,000–30,000 / € 3,350–4,050*

1157
HERMÈS
 A brooch of 18k gold in the shape of a hunting horn. Signed Hermès Paris. Ref. no. 13145. French hallmarks. L. app. 4.5 x 2.5 cm. Weight app. 24.5 g. *DKK 10,000–12,000 / € 1,350–1,600*

1158
 A pair of diamond ear pendants each set with an old-cut diamond weighing a total of app. 1.93 ct., mounted in 18k gold. Colour: Top Cape (L). Clarity: VS. L. app. 2 cm. (2) *DKK 25,000–30,000 / € 3,350–4,050*

1159
 A pair of aquamarine and diamond ear pendants each set with numerous briolette-cut aquamarines weighing a total of app. 48.85 ct. and brilliant-cut cognac coloured diamonds weighing a total of app. 0.05 ct., mounted in 18k gold. L. app. 6.5 cm. (2) *DKK 10,000–15,000 / € 1,350–2,000*

1160
 A zircon brooch set with numerous circular-cut blue and white zircons, mounted in 14k gold and platinum. L. app. 7 cm. Circa 1940-50. *DKK 10,000–12,000 / € 1,350–1,600*

1161
EVALD NIELSEN
 A bracelet of 14k gold. L. app. 19.5 cm. Weight app. 68 g. *DKK 12,000–15,000 / € 1,600–2,000*



1156



1157



1159



1158



1160



1161



1162
MARIANNE DULONG

A "Kharisma" diamond neck ring set with a brilliant-cut diamond weighing app. 0.13 ct., mounted in 18k gold. Colour: Top Wesselton (F-G). Clarity: VS. Diam. app. 12.5 cm.
Retail price DKK 47,900.

DKK 15,000–18,000 / € 2,000–2,400

1163
MARIANNE DULONG

A pair of ear pendants "Kharisma" with removable "Globe" pendants each set with a cultured Tahiti pearl, mounted in 18k gold. Pearl diam. app. 10.5 mm. L. app. 5.8 cm. (4)

Retail price app. DKK 25,000.

DKK 10,000–12,000 / € 1,350–1,600

1164
MARIANNE DULONG

A pair of "Glory" diamond ear pendants each set with three brilliant-cut diamonds weighing a total of app. 0.66 ct., mounted in 18k gold. Colour: Top Wesselton (F-G). Clarity: VS. L. app. 2.6 cm. (2)

Retail price DKK 39,900.

Accompanied by original case.

DKK 10,000–12,000 / € 1,350–1,600

1165
A diamond ring set with an old-cut diamond weighing app. 1.44 ct. encircled by numerous brilliant-cut champagne-coloured diamonds weighing a total of app. 0.24 ct., mounted in 18k gold. Colour: Wesselton (H). Clarity: SI. App. size 54.

DKK 25,000–30,000 / € 3,350–4,050

1166
KLARLUND
A diamond ring set with numerous brilliant-cut diamonds weighing a total of app. 0.86 ct., mounted in 18k three-coloured gold. Colour: Top Wesselton-Wesselton (F-H). Clarity: VS. App. size 56.

DKK 10,000–12,000 / € 1,350–1,600

1167 *
JANE KØNIG
A pearl bracelet set with a cultured baroque South Sea pearl, mounted in 18k gold. Weight app. 30 g. L. pearl app. 3 cm. L. bracelet app. 17 cm.
Retail price DKK 33,000.
Accompanied by original case.

DKK 15,000–18,000 / € 2,000–2,400





1168
LAPPONIA
 A necklace with an emerald pendant set with a numerous pear-shaped emeralds, mounted in 18k gold. L. necklace app. 42 cm. L. pendant app. 7 cm. Weight app. 61 g. Finland, 1977.
DKK 10,000–15,000 / € 1,350–2,000

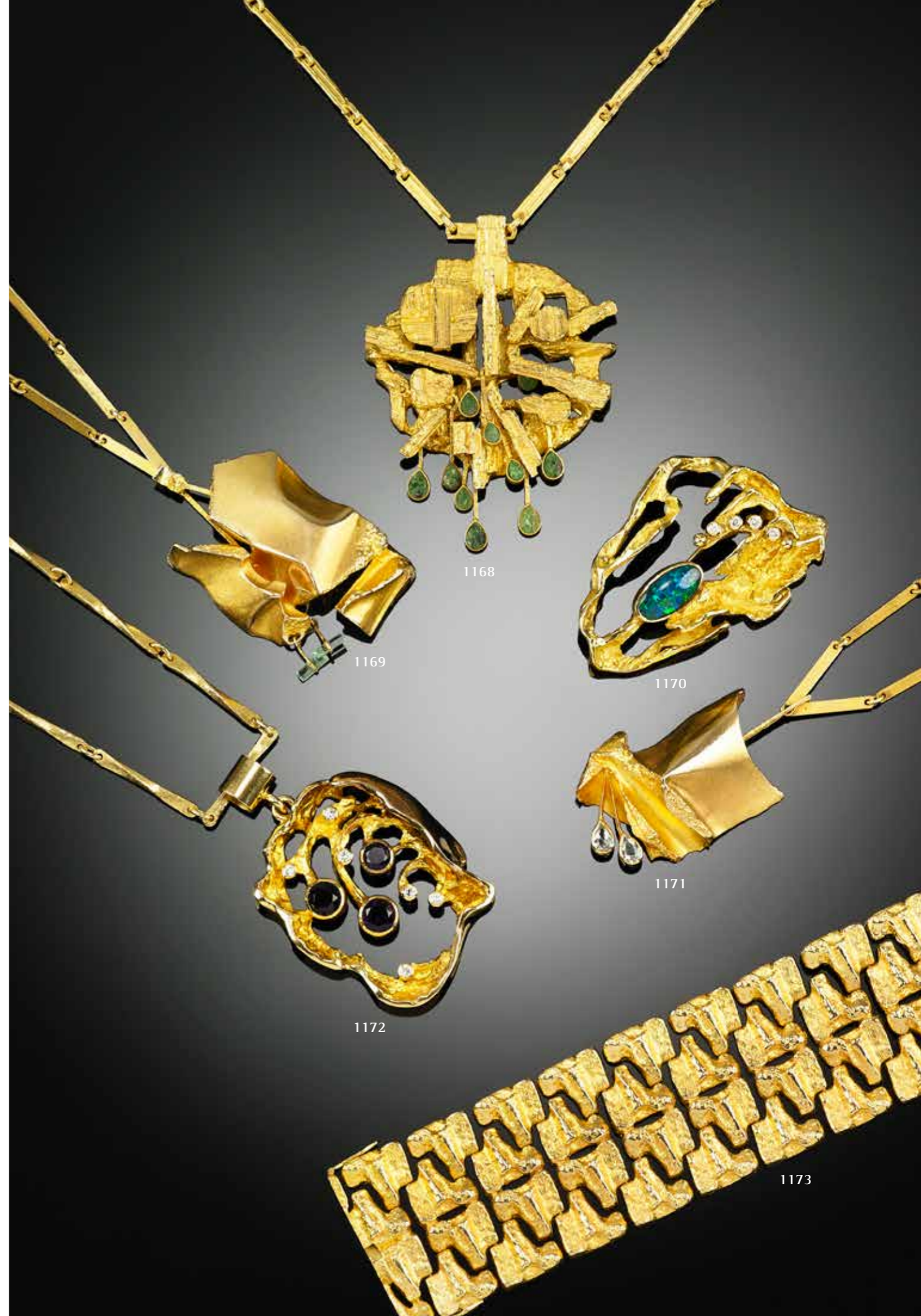
1169
LAPPONIA
 An aquamarine necklace with a pendant set with two pear-shaped aquamarines, mounted in of 14k gold. L. pendant app. 6 cm. Weight app. 46.5 g. Design Björn Weckström, Finland, 1972.
DKK 12,000–15,000 / € 1,600–2,000

1170^{ARR}
JOHN RØRVIG
 An opal and diamond brooch/pendant set with an oval cabochon opal and numerous brilliant-cut diamonds, mounted in 18k gold. Signed. Diam. app. 5.5 x 4.0 cm. Weight app. 29.5 g.
DKK 10,000–15,000 / € 1,350–2,000

1171
LAPPONIA
 An aquamarine necklace with a pendant set with two aquamarine crystals, mounted in 14k gold. L. penfant app. 6 cm. Weight app. 46.5 g. Design Björn Weckström, Finland, 1972.
DKK 12,000–15,000 / € 1,600–2,000

1172^{ARR}
JOHN RØRVIG
 A necklace with an amethyst and diamond pendant set with circular-cut amethysts and brilliant-cut diamonds weighing a total of app. 0.16 ct., mounted in 18k gold. Signed. L. necklace app. 80.0 cm. L. pendant app. 6.5 cm. Total weight app. 78 g.
DKK 15,000–18,000 / € 2,000–2,400

1173
LAPPONIA
 A bracelet of 18k gold. L. app. 18.5 cm. Weight app. 135 g. Design Björn Weckström. Finland, 1970.
DKK 40,000–50,000 / € 5,350–6,700





1174
A necklace of 18k gold. L. app. 42 cm. Weight app. 62.5 g. Italy, circa 1950-60.
Accompanied by original silk case.
DKK 15,000-20,000 / € 2,000-2,700

1175
A diamond ring set with numerous brilliant-cut diamonds weighing a total of app. 0.55 ct., mounted in 18k gold and white gold. Colour: Top Wesselton-Wesselton (G-H). Clarity: VS-SI. App. size 52-54. W. app. 1.5 cm. Weight app. 12 g.
DKK 10,000-15,000 / € 1,350-2,000

1176
A sapphire and diamond ring set with an oval-cut presumably natural yellow sapphire weighing app. 7.50 ct. encircled by numerous rose-cut diamonds, mounted in 14k gold and silver. Size 54. Circa 1900.
DKK 15,000-20,000 / € 2,000-2,700

1177
A diamond brooch set with numerous brilliant-cut diamonds weighing a total of app. 0.50 ct., mounted in 18k gold and white gold. Colour: Wesselton-Top Crystal (H-I). Clarity: VS-SI. L. app. 4 x 3 cm.
DKK 10,000-15,000 / € 1,350-2,000

1178
An Art Deco citrine and diamond ring set with an emerald-cut citrine weighing app. 48.08 ct. flanked by numerous old and single-cut diamonds, mounted in 18k gold and platinum. Size 56. Circa 1920-30.
DKK 15,000-20,000 / € 2,000-2,700

1179
A diamond bracelet set with numerous brilliant-cut diamonds weighing a total of app. 5.00 ct., mounted in 18k gold. Colour: Top Wesselton-Wesselton (G-H). Clarity: VVS. L. app. 18 cm.
Cut quality: Triple excellent-cut. Hearts & Arrows.
DKK 40,000-50,000 / € 5,350-6,700



1174



1175



1176



1177



1178



1179



1180
A diamond necklace set with two brilliant-cut diamonds weighing a total of app. 1.39 ct., mounted in 18k gold, white and pink gold. Colour: River and Top Crystal (E-I). Clarity: P1. L. app. 1.4 and 42 cm. (2)
DKK 30,000–35,000 / € 4,050–4,700

1181
A pair of diamond ear studs each set with a brilliant-cut diamond weighing a total of app. 2.42 ct., mounted in 18k gold. Colour: Top Wesselton-Wesselton (G-H). Clarity: P1. Diam. app. 6.5 mm. (2)
DKK 50,000–60,000 / € 6,700–8,050

1182
An emerald and diamond brooch set with an emerald-cut emerald encircled by old, brilliant and single-cut diamonds, mounted in 18k gold and white gold. L. app. 6 cm. Circa 1940-50.
DKK 10,000–15,000 / € 1,350–2,000

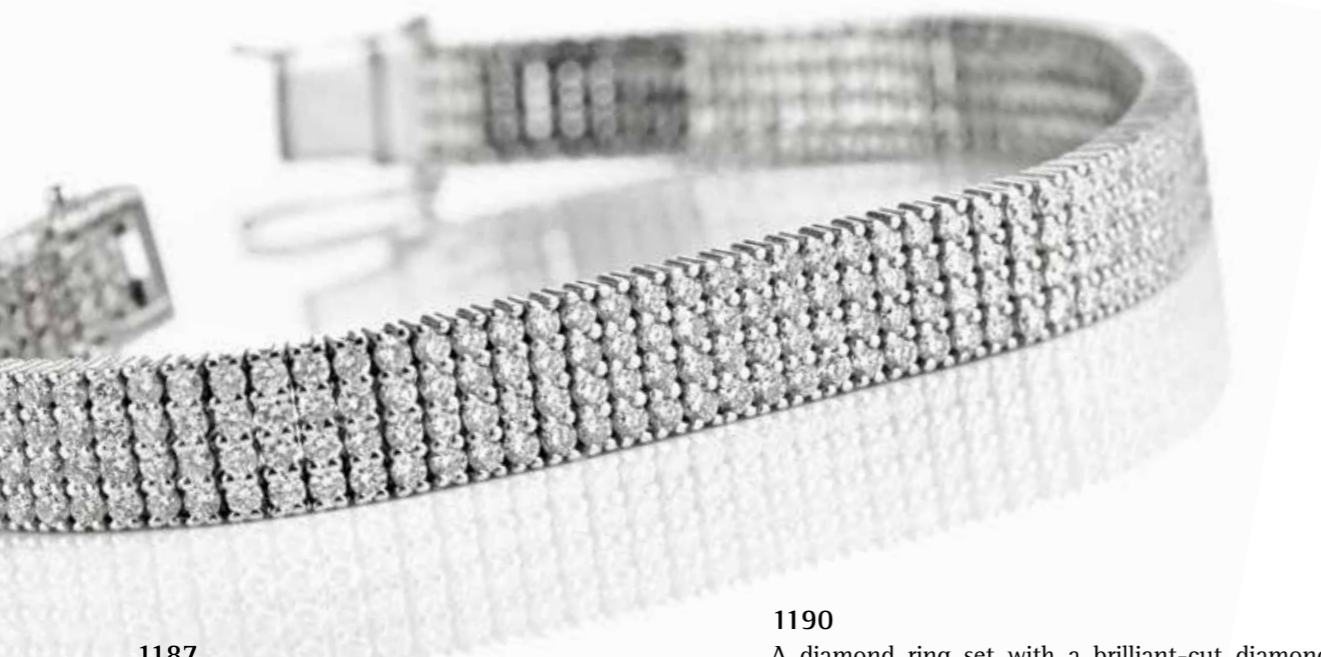
1183
An emerald eternity ring set with numerous oval-cut emeralds weighing a total of app. 4.30 ct., mounted in 18k gold. Size 54.
DKK 10,000–15,000 / € 1,350–2,000

1184
An emerald and diamond ring set with a square-cut emerald encircled by numerous old and single-cut diamonds, mounted in 18k white gold. Size 59. Circa 1940-50. DKK 15,000–20,000 / € 2,000–2,700

1185
An emerald and diamond pendant set with an emerald-cut emerald weighing app. 35.00 ct. encircled by numerous brilliant-cut diamonds weighing a total of app. 5.65 ct., mounted in 18k gold. Colour: Top Wesselton-Wesselton (G-H). Clarity: SI. L. app. 5 cm. Circa 1985.
Accompanied by case and insurance valuation from Martin Sunde A/S, Norway.
DKK 50,000–60,000 / € 6,700–8,050

1186
An emerald and diamond bracelet set with numerous oval-cut emeralds weighing a total of app. 8.00 ct. and brilliant-cut diamonds weighing a total of app. 3.57 ct., mounted in 18k gold. Colour: Wesselton-Top Crystal (H-I). Clarity: SI-P1. L. app. 18 cm. DKK 50,000–60,000 / € 6,700–8,050





1187

An emerald and diamond necklace set with a pear-shaped emerald weighing app. 9.43 ct. and numerous brilliant-cut diamonds weighing a total of app. 0.87 ct., mounted in 18k white gold. Colour: Top Wesselton-Wesselton (G-H). Clarity: SI. L. app. 44 cm.
DKK 50,000–60,000 / € 6,700–8,050

1188

A diamond ring set with three brilliant-cut diamonds weighing a total of app. 1.56 ct., mounted in 18k white gold. Colour: Crystal-Top Cape (J-K). Clarity: VVS-VS. App. size 53.5.
DKK 18,000–20,000 / € 2,400–2,700

1189

An emerald and diamond ring set with an emerald-cut emerald weighing app. 1.30 ct. flanked by two brilliant-cut diamonds weighing a total of app. 0.85 ct., mounted in 18k white gold. Colour: Wesselton-Top Crystal (H-I). Clarity: VS. Size 56.
DKK 15,000–20,000 / € 2,000–2,700

1190

A diamond ring set with a brilliant-cut diamond weighing app. 10.00 ct. and a fancy yellow brilliant-cut diamond weighing app. 2.02 ct. encircled by numerous baguette and princess-cut diamonds weighing a total of app. 14.55 ct., totalling app. 24.55 ct., mounted in platinum. App. size 60–61. Weight app. 91 g.
DKK 150,000–200,000 / € 20,000–27,000

1191

A diamond ring set with numerous brilliant-cut diamonds weighing a total of app. 1.20 ct., mounted in 18k gold and white gold. Colour: Top Wesselton-Wesselton (G-H). Clarity: P1. Size 55.
DKK 10,000–15,000 / € 1,350–2,000

1192

A diamond bracelet set with numerous brilliant-cut diamonds weighing a total of app. 7.38 ct., mounted in 18k white gold. Colour: Wesselton-Top Crystal (H-I). Clarity: VS-SI. L. app. 17.5 cm. W. app. 0.8 cm.
DKK 60,000–70,000 / € 8,050–9,400



1187



1188



1189



1190



1191



1192



1193

A diamond necklace set with an old-cut diamond weighing app. 1.15 ct., mounted in 18k white gold. Colour: Top Wesselton (G). Clarity: P1. L. app. 42 cm.
DKK 10,000–15,000 / € 1,350–2,000

1194

A pair of diamond ear pendants each set with numerous trapeze and brilliant-cut diamonds weighing a total of app. 1.05 ct., mounted in 18k white gold. Colour: Top Crystal-Crystal (I-J). Clarity: SI-P1. L. app. 2.5 cm. (2) DKK 10,000–15,000 / € 1,350–2,000

1195

A pair of diamond ear studs each set with a brilliant-cut diamond weighing a total of app. 3.08 ct., mounted in 18k white gold. Colour: Top Crystal-Crystal (I-J). Clarity: P1. Diam. app. 7.5 mm. (2)
DKK 100,000–150,000 / € 13,500–20,000

1196

A pair of diamond ear studs each set with numerous baguette and brilliant-cut diamonds weighing a total of app. 2.10 ct., mounted in 18k white gold. Colour: Top Wesselton (F-G). Clarity: VS-SI. L. app. 13 x 14 mm. (2) DKK 25,000–30,000 / € 3,350–4,050

1197

A diamond bracelet set with numerous princess-cut diamonds weighing a total of app. 4.10 ct., mounted in 14k white gold. Colour: River-Top Wesselton (D-F). Klarhed: VS1. App. 18 cm.
Accompanied by GWLAB report no. 239205311026. 2023. DKK 20,000–30,000 / € 2,700–4,050

1198

A diamond bracelet set with numerous baguette, trapeze and single-cut diamonds weighing a total of app. 5.15 ct., mounted in 18k white gold. Colour: Top Wesselton-Top Crystal (G-I). Clarity: VS-P1. L. app. 18 cm. DKK 45,000–50,000 / € 6,050–6,700



1193

1194

1195

1196

1197

1198



1202
 A ruby and diamond ring set with an octagonal Burma ruby weighing app. 4.34 ct. flanked by two trilliant-cut diamonds weighing a total of app. 0.84 ct., mounted in 18k white gold. Size 53.5.
Accompanied by Gisgem report no. 23834. 2023.
 DKK 60,000–80,000 / € 8,050–10,500

1199
 A diamond necklace set with numerous brilliant-cut diamonds weighing a total of app. 13.08 ct., mounted in 18k white gold. Colour: Top Wesselton (F). Clarity: SI. L. app. 45 cm.
Cut quality: Tripe excellent-cut. Ideal-cut.
 DKK 80,000–100,000 / € 10,500–13,500

1200
 A pair of diamond ear studs each set with a brilliant-cut diamond weighing a total of app. 1.02 ct., mounted in 18k white gold. Colour: Top Wesselton (F-G). Clarity: SI. Diam. app. 5.10 mm. (2)
Accompanied by HRD report no. 230000026245 and 230000026248 and two stone parcels. 2023.
 DKK 20,000–25,000 / € 2,700–3,350

1201
 A diamond ring set with three brilliant-cut diamonds weighing a total of app. 1.56 ct., mounted in 18k white gold. Colour: Wesselton-Top Crystal (H-I). Clarity: VVS-VS. Size 55.
 DKK 20,000–30,000 / € 2,700–4,050

1203
 A diamond eternity ring set with numerous brilliant-cut diamonds weighing a total of app. 1.35 ct., mounted in 18k white gold. Colour: Top Wesselton-Wesselton (G-H). Clarity: VS. Size 57.
Retail price app. DKK 46,000.
 DKK 10,000–12,000 / € 1,350–1,600

1204
 An Art Deco ruby and diamond brooch set with square-cut rubies and numerous baguette and square-cut diamonds weighing a total of app. 1.00 ct., mounted in platinum. Colour: Top Wesselton-Wesselton (G-H). Clarity: VS-SI. L. app. 4.7 cm. Circa 1920-30.
 DKK 15,000–20,000 / € 2,000–2,700

1205
 A diamond bracelet set with numerous brilliant-cut diamonds weighing a total of app. 5.82 ct., mounted in 18k white gold. Colour: Top Wesselton-Wesselton (G-H). Clarity: VS-SI. L. app. 18 cm.
 DKK 35,000–40,000 / € 4,700–5,350



1199



1200



1201



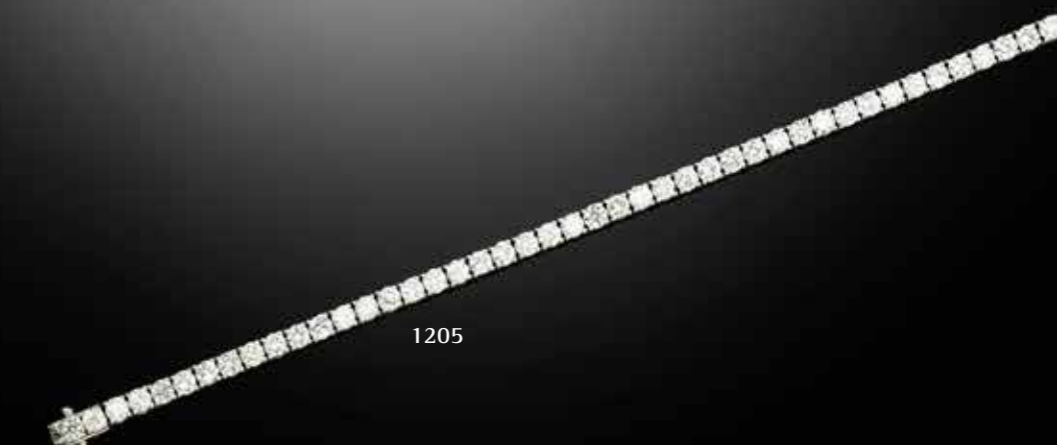
1202



1203



1204



1205



1209

A pair of diamond ear pendants "Creoles" each set with numerous single-cut diamonds weighing a total of app. 2.60 ct., mounted in 18k white gold. Colour: River (D). Clarity: VVS. Diam. app. 2.2 cm. (2)
Cut quality: Triple excellent-cut. Hearts & Arrows.
 DKK 30,000–35,000 / € 4,050–4,700

1206

A diamond necklace set with a brilliant-cut diamond weighing app. 1.00 ct., mounted in 18k white gold. Colour: Top Wesselton (F). Clarity: VVS. L. app. 45 cm. Accompanied by HRD report no. 220000112052. 2022.
 DKK 65,000–70,000 / € 8,750–9,400

1207

A pair of ruby and diamond ear pendants each set with oval-cut rubies weighing a total of app. 3.13 ct. and brilliant-cut diamonds weighing a total of app. 0.69 ct., mounted in 18k white gold. L. app. 2.7 cm. (2)
 DKK 10,000–12,000 / € 1,350–1,600

1208

A pair of ruby and diamond ear studs in the shape of hearts each set with a heart-shaped ruby weighing a total of app. 1.31 ct. encircled by numerous brilliant-cut diamonds weighing a total of app. 0.51 ct., mounted in 18k white gold. L. app. 10.5 x 10.8 mm. (2)
 DKK 10,000–15,000 / € 1,350–2,000

1210

A diamond ring set with numerous single-cut diamonds weighing a total of app. 3.38 ct., mounted in 18k white gold. Colour: River (D). Clarity: VVS. Size 54.
 DKK 35,000–40,000 / € 4,700–5,350

1211

A rubellite and diamond ring set with an oval-cut rubellite weighing app. 1.65 ct. encircled by numerous baguette and brilliant-cut diamonds weighing a total of app. 1.50 ct., mounted in 18k white gold. Colour: River (E). Clarity: VVS. Size 60.
 DKK 20,000–25,000 / € 2,700–3,350

1212

A diamond bracelet set with numerous brilliant-cut diamonds weighing a total of app. 2.85 ct., mounted in 18k white gold. Colour: Top Wesselton (F–G). Clarity: VS. L. app. 17 cm. DKK 40,000 / € 5,350



1206



1207



1208



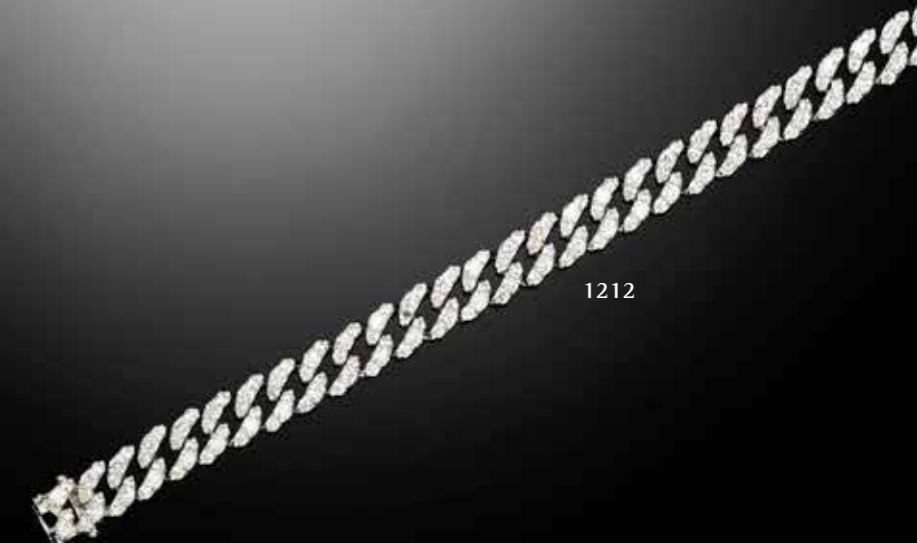
1211



1209



1210



1212



1213
TOFTEGAARD

A jewellery set comprising a necklace with a pendant and a pair of ear pendants of 14k gold. L. necklace app. 42 cm. L. pendant app. 6.5 cm. L. ear pendants app. 5.2 cm. Total weight app. 17 g. (3)
DKK 10,000–12,000 / € 1,350–1,600

1214
A pair of diamond ear studs each set with a brilliant-cut diamond weighing a total of app. 2.02 ct., mounted in 18k gold. Colour: Cape (M). Clarity: VVS. (2)
DKK 30,000–50,000 / € 4,050–6,700

1215
A diamond ring set with numerous brilliant and baguette-cut diamonds weighing a total of app. 2.40 ct., mounted in 18k gold. Colour: Top Wesselton-Top Crystal (G-I). Clarity: VS-P1. App. size 57.
DKK 15,000–20,000 / € 2,000–2,700

1216
VAN CLEEF & ARPELS
A diamond ring set with numerous brilliant-cut diamonds weighing a total of app. 0.62 ct., mounted in 18k gold. Colour: River-Top Wesselton (E-F). Clarity: VS. Serial no. 16503. Size 55.
DKK 10,000–15,000 / € 1,350–2,000

1217
TOFTEGAARD
A bracelet of 14k. W. 1.7 cm. L. 21 cm. Weight app. 76.5 g. DKK 18,000–20,000 / € 2,400–2,700

1218
A sapphire bracelet set with numerous oval, circular, baguette, pear and heart-shaped multi coloured sapphires weighing a total of app. 12.29 ct., mounted in 18k pink gold. L. app. 18 cm.
DKK 20,000–30,000 / € 2,700–4,050





1219

A cameo hardstone jewellery set comprising two necklaces, a brooch and a pair of ear pendants each set with carved agate, carnelian, jasper, onyx and lava, mounted in 18k gold. L. app. 42, 36, 5 and 2 cm. Italy, circa 1800-20. (5)

Accompanied by original case.

Provenance: The Danish owner's great-grandfather acquired this cameo parure in Stockholm 1917 from a Russian refugee, who had escaped the Russian revolution.

Stone cameos have been made in ancient Greece since 5th century BC, but it was the Napoleonic classicism that brought a renewed interest in cameos. The Italiens excelled in the art of cutting cameos and Napoleon brought back some from Italy. As a result the demand for cameos grew, and they became popular souvenirs of the Grand Tour.

Cameo jewellery was also made in Russia, e.g. by Duval Frères i St. Petersburg. An example of a gold filigree, diamond and papier-mâché cameo parure is mentioned and reproduced in: Ulla Tillander-Godenhielm, "Jewels from Imperial St. Petersburg", London and St. Petersburg 2012, p. 40. DKK 50,000-60,000 / € 6,700-8,050



1220

A Russian 18k gold pendant ball-watch, set with filigree and spheres in Renaissance style, stylized form as inspired by the 16th and 17th century Russian tsar crowns, top with a suspension ring and three links, flat bottom with glass to the white enamel dial with Arabic numerals and gold hands. Assay mark 1896-1908, 72 standard. Spherical movement in layers marked RA 13163. H. (incl. suspension ring and three links) 3.8 cm. Diam. 2.2 cm. In original presentation leather box, lined with silk and velvet, from H. Moser & Cie, St. Petersburg.



To the right the younger Jørgen Buch. To the left the elderly Grand Duchess Olga Alexandrovna of Russia (1882-1960) in the late 1950s in her garden in Toronto, Canada. This photograph was sent to Jørgen Buch. (Private photographs).

Including a Russian 14k gold, red and green gold chain with elongated and pierced links, decorated with translucent white enamel on guilloché ground. Maker's mark BB, St. Petersburg 1896-1908, 56 standard. Weight 15 g. L. 62 cm. (3).

Provenance: The Danish owner's grandmother's brother, Jørgen Buch (b. Sakskøbing 1890, d. Esbønderup 1972). He traveled as 26-year-old in 1916 to St. Petersburg with a business degree and got a job in a forwarding company. Shortly afterwards the Russian revolution broke out in 1917. In secret, Jørgen Buch worked for the Danish Red Cross, where he helped members of the Tsar's family to escape. In this connection, he got to know Grand Duchess Olga Alexandrovna of Russia, who later fled to Denmark. Here, Jørgen Buch assisted Grand Duchess Olga Alexandrovna of Russia with the purchase in 1930 of the farm Knudsminde in Ballerup. In 1940, he himself bought the farm Kirstinelund in the immediate vicinity of the Grand Duchess' property. Jørgen Buch received the watch with chain as a gift from the Grand Duchess for his helpfulness over the years.

DKK 12,000-15,000 / € 1,600-2,000

1221

AUGUSTE PEYROULA

b. 1904, d. 1937

An Art Deco diamond vanity case set with rose-cut diamonds and black enamel, mounted in partly gilded silver. Maker's mark. L. app. 9.0 x 4,5 cm. Paris, circa 1920-30.

Auguste Peyroula worked for both Cartier and Tiffany.

DKK 10,000-15,000 / € 1,350-2,000

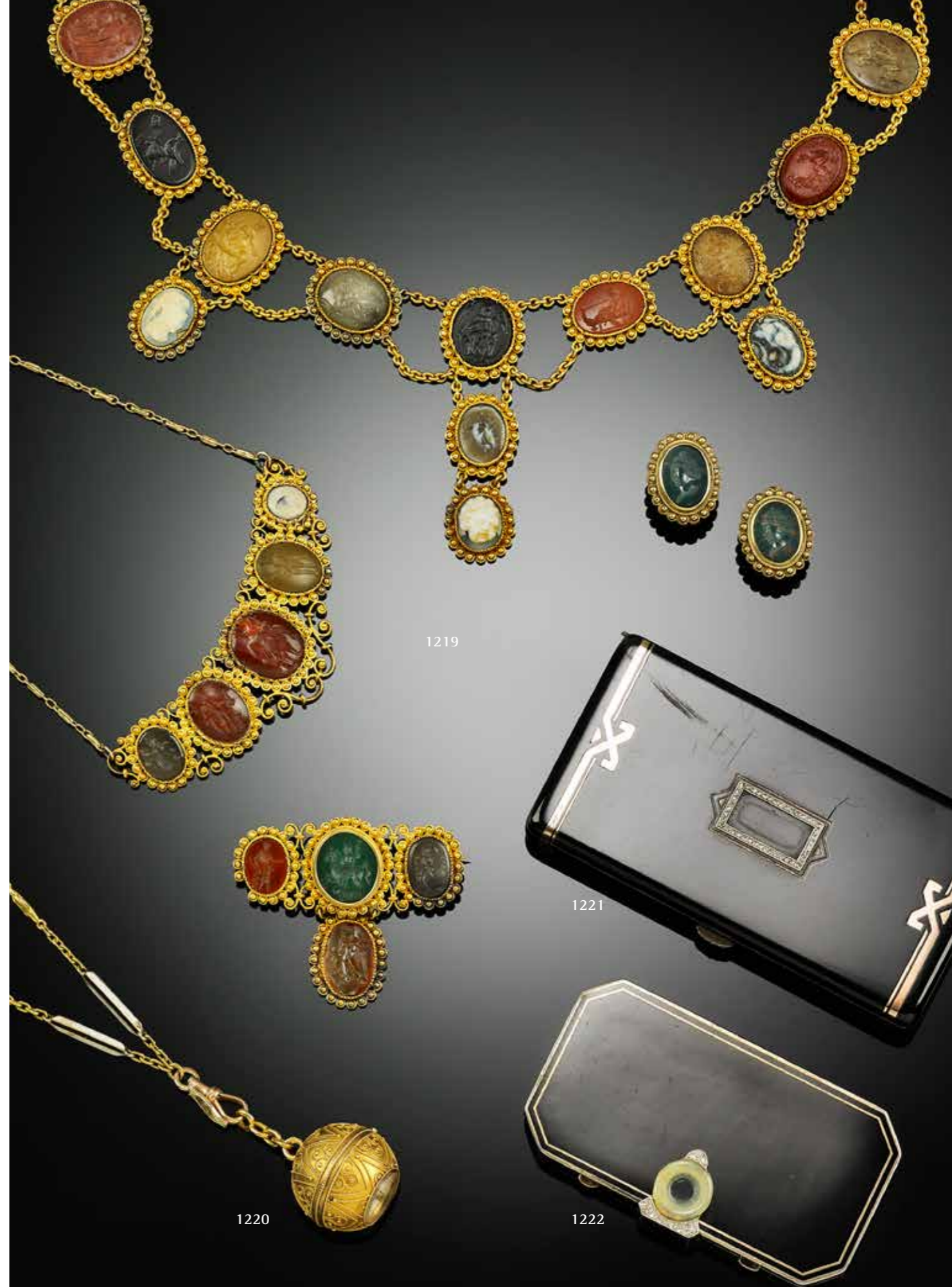
1222

AUGUSTE PEYROULA

An Art Deco diamond vanity case set with rose-cut diamonds, carved jade and black enamel, mounted in partly gilded silver. Maker's mark. Ref. no. 1428. L. app. 8,5 x 4,0 cm. Paris, circa 1920-30.

Auguste Peyroula worked for both Cartier and Tiffany.

DKK 10,000-15,000 / € 1,350-2,000



1219

1221

1220

1222



1223
A necklace of 18k gold and white gold. L. 42.5 cm.
Weight app. 125 g.
Accompanied by case.
DKK 30,000–35,000 / € 4,050–4,700

1224
A sapphire and diamond ring set with an oval-cut natural sapphire weighing app. 2.15 ct. encircled by numerous old-cut diamonds weighing a total of app. 1.00 ct., mounted in 18k gold. Size 53.5.
DKK 20,000–25,000 / € 2,700–3,350

1225
GILBERT ALBERT
A pearl bangle set with numerous cultured pearls, mounted in 18k gold. Pearl diam. app. 2.0–3.0 mm. Diam. app. 5.5 cm. Accompanied by one ear clip. L. app. 2.8 cm. Total weight app. 87 g. Circa 1970–80. (2)
Accompanied by case.
Partly depicted. DKK 20,000–30,000 / € 2,700–4,050

1226
A Russian case of 14k gold with fluted design and clasp set with a cabochon sapphire. Maker's mark BB, St. Petersburg 1896–1908, 56 standard. Weight 104 g. H. app. 9 cm. W. 6 cm.
The maker is possible Vasili Victorovich Victorov in St. Petersburg, though he is registered as active in the last quarter of the 19th century.

Provenance: Danish private ownership.
DKK 20,000–25,000 / € 2,700–3,350

1227
A. MICHELSEN
A bracelet of 18k gold. L. app. 19.5 cm. Weight app. 106.5 g. DKK 25,000–30,000 / € 3,350–4,050



1223



1224



1226



1225



1227

1228

CHANEL

A "Rectangular Mini Flap Bag" of black quilted lambskin with silver tone hardware, chain strap, one exterior back pocket, CC turn lock, two interior pockets and black leather lining. H. 13 x W. 20 x D. 6.5 cm. 2014.

Accompanied by copy of receipt from 2014.

DKK 20,000–25,000 / € 2,700–3,350



1228



1229

1229

CHANEL

A "Single Flap" bag of quilted pink leather with gold toned hardware, CC turn lock, double chain strap with charms in the shape of hearts, one exterior back pocket, two interior pockets and pink leather lining. H. 17 x W. 25 x D. 6 cm. 2008-2009.

Accompanied by dust bag and Carte D'authenticité.

DKK 20,000–25,000 / € 2,700–3,350

1230

CHANEL

A "Reissue" bag of black patent leather with gold tone hardware, double chain strap, one exterior back pocket, four interior pockets and burgundy leather lining. H. 20 x W. 31 x D. 8 cm. App. 2006-2008.

Accompanied by original box, dust bag, card of authenticity from The Vintage Seasons and carte d'authenticité.

DKK 30,000–35,000 / € 4,050–4,700



1230



1231

1231

HERMÈS

A "Kelly 32" bag of black crocodileskin with gold tone hardware, short handle, three interior pockets and black leather lining. H. 23 x W. 32 x D. 12 cm.

Aquired at Le boudoir second hand in Zürich, Switzerland in 2012. Accompanied by a copy of the receipt.

This lot is subject to CITES export/import restrictions and can only be shipped to adresses within the EU or collected from one of our departments. Please contact the department for further details.

DKK 30,000–40,000 / € 4,050–5,350

1232

HERMÈS

A "Birkin 35" bag of dark brown Togo leather with silver tone hardware, two handles, two interior pockets and dark brown leather lining. Accompanied by padlock and keys in clochette. H. 25 x W. 35 x D. 20 cm. 2014.

Accompanied by original box, dust bag, raincoat and receipt from 2014.

DKK 40,000–60,000 / € 5,350–8,050



1232



1233

1233

LOUIS VUITTON

A "Capucines MM" bag of beige Taurillon leather with gold tone hardware, short handle and two compartments divided by a zipped pocket. H. 23 x W. 36 x D. 14 cm. 2014.

DKK 18,000–20,000 / € 2,400–2,700



1234

1234

HERMÈS

A "Kelly 32" bag of dark brown Togo leather with gold tone hardware, short handle, detachable shoulder strap and three interior pockets. Accompanied by padlock and keys in clochette. H. 23 x W. 32 x D. 12 cm. 2004.

Accompanied by two original dust bags and receipt from 2004.

DKK 50,000–60,000 / € 6,700–8,050

INDEX

A

Albert, Gilbert 1225

B

Breguet 1258
Breitling 1274, 1275
Buccellati 1076
Bulgari 1030, 1034, 1265

C

Cartier 1009, 1013, 1016
1017, 1047, 1049
1279, 1280, 1281
Chanel 1228, 1229, 1230
Chopard 1031, 1087, 1088
1089, 1090, 1091
1092, 1255, 1267

D

Dulong, Marianne 1162, 1163, 1164

F

Faraone 1006

G

Girard-Perregaux 1254
Griegst, Arje 996, 997, 998
999, 1000, 1001
1002, 1003, 1004

H

Hancocks & Co. 1078
Hartmann's 1147
Hermès 1157
1231, 1232, 1234

I

IWC 1239, 1241, 1242

J

Jaeger-LeCoultre 1240
Juhl-Jørgensen, Marlene 995

K

Klarlund 1166
König, Jane 1167

L

Lapponia 1168
1169, 1171, 1173
Lynggaard, Ole 991, 993, 994
1021, 1132, 1133
1134, 1135, 1137

M

Michelsen, A. 1227
Movado 1262

N

Nielsen, Evald 1156, 1161

O

Omega 1261, 1273, 1276

P

Panerai 1272
Patek Philippe 1244, 1249, 1256
1264, 1266, 1268
Peyroula, Auguste 1221, 1222
Philippe, Patek 1283
Piaget 1263
Pomellato 1043

R

Rasmussen, Chr. 1029
Rolex 1235, 1236, 1237
1238, 1245, 1246
1247, 1248, 1250
1251, 1252, 1253
1257, 1259, 1269
1270, 1277, 1278
Rørvig, John 1170, 1172

S

Shamballa 1018, 1019, 1022

T

Tiffany & Co. 1005, 1011
Toftegaard 1213, 1217
Tudor 1260

U

Ulysse Nardin 1271

V

Vacheron Constantin 1243
Van Cleef & Arpels 1048, 1216
Vuitton, Louis 1233

W

Walter-Rasmussen, H. 1062
Wollny, V. 1113

Modern Art ^{and} Design

Live Auction 12-13 June 2023



Disse købsvilkår udgør Bruun Rasmussen Kunstauktioner A/S' ("BRK") købsvilkår for traditionelle auktioner og er gældende fra 1. februar 2017. BRK kan til enhver tid ændre købsvilkårene.

Ved bud accepterer budgiver/køber at være bundet af de til enhver tid gældende købsvilkår, som fremgår på bruun-rasmussen.dk. Købsvilkårene gælder både i forhold til erhvervsdrivende og forbrugere.

FØR AUKTIONEN

1 VURDERING AF GENSTANDE

1.1 Alle udbudte genstande er vurderet af BRK. Vurderingen er et skøn over det forventede hammerslag, jf. punkt 5.3. Vurderingen er baseret på tidligere salg af samme type genstande og erfaringer hos BRK. Hammerslag kan derfor falde højere eller lavere ud end vurderingen.

2 BESKRIVELSE AF GENSTANDE

- 2.1 Udbudte genstande præsenteres med fotos og beskrivelse i kataloger og på bruun-rasmussen.dk. Beskrivelsen foretages efter bedste overbevisning af BRK og ud fra en nøje undersøgelse efter den på salgstidspunktet herskende opfattelse blandt eksperter.
- 2.2 De udbudte genstande er af en alder og art, der bevirker, at de ofte er behæftede med slitage, mangler, beskadigelser og reparationer. Som udgangspunkt sælges alt som brugte genstande, og derfor indeholder beskrivelsen i kataloget og på bruun-rasmussen.dk ikke en redegørelse for ovenstående punkter eller genstandens stand.
- 2.3 I visse tilfælde vælger BRK at beskrive en genstands oprindelse. Det sker, hvis en tidligere ejer er offentlig kendt, og/eller hvis historien om et tidligere ejerskab belyser genstanden og dens art. Omvendt sker det også, at sådanne informationer udelades fra beskrivelsen, f.eks. for at imødekomme sælgers ønske om diskretion.
- 2.4 Vurderingen og beskrivelsen kan blive revideret forud for auktionen. Ændringer offentliggøres på bruun-rasmussen.dk

3 EFTERSYN

- 3.1 Udbudte genstande udstilles op til auktionen i et showroom hos BRK. Potentielle budgivere opfordres til at se genstanden efter i detaljer og har selv ansvaret for at forvise sig om dens stand på disse eftersyn, hvor der også er mulighed for at rådføre sig hos vurderingssagkyndige.
- 3.2 Hvis en potentiel køber ikke har mulighed for at besigtige genstanden ved selvsyn, kan der i de fleste tilfælde udfærdiges en konditionsrapport. Beskrivelsen heri er foretaget efter BRK's bedste overbevisning, men er ikke baseret på videnskabelige undersøgelser. En konditionsrapport tjener blot som identifikation og er ment som en hjælp til budgivere, der ikke selv har mulighed for at besigtige genstanden på eftersynet.

UNDER AUKTIONEN

4 BRK'S ROLLE

- 4.1 Salget af en genstand formidles af BRK på vegne af sælger. BRK afhænder altid udbudte genstande til den højst mulige pris under budgivningen.
- 4.2 Udbudte genstande kan have en med sælger aftalt mindstpris, hvorunder den ikke kan sælges. Denne pris er fortrolig.
- 4.3 De traditionelle auktioner overværes af en af Justitsministeriet beskikket auktionsleder, der sikrer, at auktionerne går retmæssigt for sig.

5 BUDGIVNING

- 5.1 Auktionerne afvikles i danske kroner. De tilnærmelsesvise beløb i euro/US dollar vil blive oplyst på skærme i auktionssalen og i øvrigt på opfordring.
- 5.2 Auktionarius bestemmer overbuds størrelse og i hvilket tempo, auktionen afvikles. Overbud stiger normalt med 5 % - 10 % i forhold til det foregående bud. Normalt sælges der 50-100 katalognumre i timen.
- 5.3 Hammerslag betegner både det forhold, at auktionarius slår med hammeren og derved markerer budgivningens afslutning, og den pris (budsum), den udbudte genstand sælges til. Se punkt 7 vedrørende beløb, der tillægges hammerslaget.
- 5.4 Køber er den budgiver, der opnår hammerslag. Ved hammerslaget indgås på baggrund af disse købsvilkår en bindende købs-/salgsaftale.
- 5.5 Bydes på andres vegne, hæfter budgiver som selvskyldnerkautionist for handlen.
- 5.6 Genstande købes som beset, og køber har uanset budtype ingen fortrydelsesret, heller ikke efter forbrugeraftaleloven.
- 5.7 Budgiver skal efter anvisninger fra BRK identificere sig og dokumentere sin betalingsdygtighed, f.eks. ved registrering af gyldigt betalings-/kreditkort, bankgaranti eller indbetaling af depositum.
- 5.8 BRK kan nægte at acceptere et bud, hvis en tilstrækkelig sikkerhed for betaling mangler, eller hvis budgiver tidligere har misligholdt betalingsforpligtigelser ved køb hos BRK.
- 5.9 Auktionslederen træffer i samråd med auktionarius afgørelse i alle tvivlstilfælde omkring budgivningen.

6 BUDTYPER

- 6.1 Der er følgende muligheder for at afgive bud:
- PERSONLIGT FREMMØDE:**
Registrering og udlevering af bydeskilt foregår ved indgangen til auktionssalen. Når budgiver ønsker at byde, signaleres dette til auktionarius ved at række bydeskiltet i vejret og tydeligt fremvise dets nummer.
- KOMMISSIONSBUD:**
Det ønskede maksimale bud kan afgives via bruun-rasmussen.dk frem til auktionens start eller pr. e-mail, fax eller telefon, så budet er modtaget senest 24 timer forud for auktionens start. En kommissionær byder på budgivers vegne inden for rammerne af det ønskede maksimalbud og vil altid afgive lavest muligt overbud.
- TELEFONBUD:**
I forhold til visse genstande er der mulighed for at blive ringet op af en medarbejder fra BRK, der vil byde på budgivers vegne under auktionen. Servicen kan bestilles via bruun-rasmussen.dk indtil tre timer før auktionens start.

LIVE BIDDING:

Det er muligt at følge auktionen live og byde med via bruun-rasmussen.dk

FORAUKTION:

Visse traditionelle auktioner indledes med en net-auktion. De højeste bud på net-auktionen danner udgangspunktet på den efterfølgende traditionelle auktion.

EFTER AUKTIONEN

7 BELØB, DER TILLÆGGES HAMMERSLAGET

- 7.1 I tillæg til hammerslaget, jf. punkt 5.3, skal køber for den enkelte genstand betale købersalær og, hvis betingelserne er opfyldt, de øvrige beløb, der er nærmere beskrevet nedenfor. Det samlede beløb, som køber skal betale til BRK, benævnes "købesummen".
- 7.1.1 Købersalær: Hammerslaget tillægges et salær til BRK. På de traditionelle auktioner udgør salæret 25,6 % af hammerslaget + moms af salæret, i alt 32 %. For frimærker og mønter udgørsalæret 20 % af hammerslaget + moms af salæret, i alt 25 %.
- 7.1.2 "LIVE bidding": BRK's "LIVE bidding"-software via bruun-rasmussen.dk er gratis at benytte for budgivere.
- 7.1.3 Fuldmoms: Visse genstande handles efter de gældende regler om fuldmoms. Her beregnes der moms på 25 % af både hammerslag og salær. Disse genstande er i beskrivelsen i kataloget og på bruun-rasmussen.dk mærket med symbolet "*" eller med teksten: "Dette emne handles i fuldmoms".
- 7.1.4 Kunstnerafgift: Ifølge dansk lovgivning om ophavsret skal der opkræves kunstnerafgift (følgeretsvederlag) for værker af nyere danske og visse udenlandske kunstnere, som enten er nulevende eller ikke har været døde i mere end 70 år. Kunstnerafgiften opkræves på vegne af VISDA. Disse værker er i kataloget mærket med "ARR" (Artist's Resale Right) og på bruun-rasmussen.dk med teksten "Dette emne er belagt med kunstnerafgift". Kunstnerafgiften tillægges hele hammerslaget + salær (ekskl. moms), når beløbet overstiger 300 euro, som angivet nedenfor:

Hammerslag + salær (ekskl. moms)	Betalingssats
300,01 - 50.000 euro	5%
50.000,01 - 200.000 euro	3%
200.000,01 - 350.000 euro	1%
350.000,01 - 500.000 euro	0.5%
over 500.000 euro	0.25%

Kunstnerafgiften kan ikke overstige 12.500 euro (ekskl. moms) for den enkelte genstand. Afgiften skal betales i danske kroner, og omregningskursen (EUR/DKK) fastsættes af VISDA.

- 7.1.5 Betalings-/kreditkortgebyr: BRK forbeholder sig ret til at opkræve de af indløsningselskaberne pålagte betalings-/kreditkortgebyrer. Satserne fremgår ved budgivning via bruun-rasmussen.dk og ved betaling.

8 BETALINGSFRIST

- 8.1 Købesummen forfalder til betaling ved hammerslaget, og køber har herefter otte dage til at betale købesummen til BRK.

9 BETALINGSMÅDER

- 9.1 Betaling kan ske på følgende måder:
- A: Med betalings-/kreditkort (Dankort, Visa, MasterCard, Maestro, Diners Club, JCB og China UnionPay) eller kontant (op til 19.999 kr.) i auktionssalen eller efterfølgende i en afdeling hos BRK. Bemærk, at vi ikke modtager 500-eurosedler.

B: Med betalings-/kreditkort (Dankort, Visa, MasterCard, Maestro, Diners Club og JCB) på bruun-rasmussen.dk under købers personlige side.

C: Via bankoverførsel til BRK's konto i Danske Bank: 4183 4310970638 · Swift/BIC: DABADKKK · IBAN: DK4130004310970638.

10 MOMSFRITAGELSE, -BETALING OG -DEPONERING

- 10.1 Visse købere kan vælge hvilken momstype, der skal være gældende for handlen. Valget skal meddeles BRK senest to hverdage efter købet og kan ikke omgøres.
- A: Momsregistrerede virksomheder i Danmark kan vælge, at handlen skal ske efter reglerne om fuldmoms, jf. punkt 7.1.3.
- B: Momsregistrerede virksomheder i et andet EU-land kan fritages for dansk moms, når det kan dokumenteres, at genstanden er transporteret til den udenlandske adresse, som køber har oplyst over for BRK, og som er anført på fakturaen. I sådanne tilfælde skal der afregnes moms efter de gældende regler i det land, hvor køber er momsregistreret. Det tilrådes at søge oplysning hos de lokale myndigheder. Køber kan undlade at gøre brug af muligheden for momsfrigatelse og i stedet betale dansk brugtmoms/fuldmoms.
- C: Købere med bopæl uden for EU kan fritages for dansk moms, når det kan dokumenteres, at genstanden er transporteret ud af EU. BRK udsteder så vidt muligt og mod gebyr de fornødne eksportpapirer, som skal fremvises ved toldmyndighederne. Køber kan undlade at gøre brug af muligheden for momsfrigatelse og i stedet betale dansk brugtmoms/fuldmoms.
- 10.2 Momsregistrerede virksomheder i et andet EU-land og købere med bopæl uden for EU skal deponere den danske moms af fakturabeløbet hos BRK, indtil eksporten er gennemført på dokumenteret lovligt vis. Foretages eksporten af en af BRK godkendt speditor, skal momsen ikke deponeres. Se listen over godkendte speditorer på bruun-rasmussen.dk
- ## 11 OVERSKRIDELSE AF BETALINGSFRIST
- 11.1 Overskrides en betalingsfrist, herunder fristen i punkt 8, opkræves morarenter, som beregnes efter Nationalbankens officielle udlånsrente + 8 % om året af det skyldige beløb.
- 11.2 Betales købesummen inkl. renter ikke senest ti dage efter, at der er fremsat påkrav herom, er BRK berettiget til at søge købesummen betalt ved modregning i depositum/ved træk på bankgaranti eller at hæve købet.
- 11.3 Hæves købet, er BRK berettiget til at sælge genstanden på en ny auktion og kræve omkostningerne og en eventuel difference mellem hammerslag (samt salær), der er opnået på de to auktioner, betalt af den misligholdende køber.
- 11.4 Alle forfaldne krav (inkl. omkostninger), som ikke betaales rettidigt, kan BRK i tillæg til inkasso søge inddrevet på følgende måder:
- A: For købers regning sælge genstande indleveret til auktion af eller på vegne af køber. Salget kan gennemføres uden hensyntagen til en aftalt mindstepris. Genstande indleveret til auktion kan ikke kræves udleveret, så længe forfalden gæld henstår ubetalt.
- B: Inddrage købers tilgodehavende hos BRK, herunder tilgodehavende fra salg af genstande indleveret af eller på vegne af køber, uanset om et sådant tilgodehavende stammer fra auktionssalg, som ligger forud for eller efter tidspunktet for købers misligholdelse.

12 AFHENTNING OG UDLEVERING

- 12.1 Ejendomsretten til en købt genstand overgår til køber, når hele købesummen inkl. eventuelle renter og gebyrer er betalt, og først herefter kan udlevering af genstanden finde sted.
- 12.2 Ved udlevering af en købt genstand forbeholder BRK sig retten til at kræve tilfredsstillende dokumentation for, at den person, som ønsker genstanden udleveret, enten selv er køberen eller er bemyndiget af køberen til at få genstanden udleveret.
- 12.3 Udlevering af visse våben kræver forevisning af gyldig våbentilladelse. Sådant krav er angivet med teksten "Køb af dette emne kræver forevisning af gyldig våbentilladelse" i kataloget og på bruun-rasmussen.dk
- 12.4 Købte genstande henligger fra hammerslaget for købers regning og risiko. Afhentning skal ske senest otte hverdage efter sidste auktionsdag.
- 12.5 Foretages afhentningen ikke rettidigt, transporteres de købte genstande til et lager for købers regning og risiko. Transporten koster 150 kr. inkl. moms pr. genstand, og opbevaringen koster 150 kr. inkl. moms pr. genstand pr. påbegyndt uge. Henligger en genstand uafhængt i så lang tid, at lagerlejen overstiger genstandens værdi, er BRK berettiget til for købers regning og risiko og uden hensyn til mindstepris at bortauktionere genstanden eller sælge den underhånden. Køber hæfter fortsat for udgifter til transport og lagerleje, der ikke dækkes ved sådant salg.
- 12.6 I henhold til gældende hvidvasklovgivning skal køber i visse tilfælde udlevere identitetsoplysninger og fremvise billed-id til BRK, før køber kan få den købte genstand i sin besiddelse

13 FORSENDELSE

- 13.1 Er køber forhindret i selv at afhente en genstand, tilbyder BRK for købers regning og risiko at emballere og arrangere forsendelse enten med post eller speditør. Se punkt 12.2 angående legitimation.

14 EKSPORTTILLADELSE

- 14.1 For at sikre at dansk kulturarv af afgørende betydning forbliver i Danmark, kan Kulturværtdiudvalget for visse genstandes vedkommende nedlægge eksportforbud. Hvis køber ønsker at eksportere en genstand ud af Danmark, hvor der er nedlagt et eksportforbud, annulleres købet, og Kulturværtdiudvalget er forpligtet til at overtage genstanden til den pris, der blev opnået på auktionen. Køber kan ikke rejse krav mod BRK som følge af, at et eksportforbud bliver nedlagt.
- 14.2 Visse genstande er omfattet af Washingtonkonventionen, også kendt som CITES, der har til formål at stoppe ulovlig handel med genstande fremstillet af udryddelsestruede vilde dyr og planter. Såfremt en genstand er omfattet af Washingtonkonventionen, CITES, liste 1, vil det fremgå af beskrivelsen på bruun-rasmussen.dk og være markeret med symbolet "©" i kataloget. Følgende regler gør sig gældende:
 - A: Genstande omfattet af Washingtonkonventionen, CITES, liste 1, må kun handles, når der foreligger en dispensation i form af et såkaldt CITES-salgscertifikat. BRK indhenter det fornødne certifikat fra Naturstyrelsen, der tillader handel og eksport til lande inden for EU. Dog kan genstande, som er færdigforarbejdet før 1947, frit handles inden for EU uden et certifikat.
 - B: Det er alene genstande omfattet af Washingtonkonventionen, CITES, liste 1, som er særkilt markeret på bruun-rasmussen.dk og i kataloget. Genstande omfattet af Washingtonkonventionen, CITES, liste 2, der frit kan sælges og transporteres inden for EU, er ikke særkilt markeret.
 - C: Ved eksport til lande uden for EU skal der uanset årstallet for genstandens færdigforarbejdning altid indhentes en CITES-reeksporttilladelse fra Naturstyrelsen,

når genstanden er omfattet af Washingtonkonventionen, CITES, liste 1 og 2. Denne eksporttilladelse kan normalt indhentes problemfrit, når liste 1-genstande enten er solgt med et CITES-salgscertifikat eller er færdigforarbejdet før 1947. Liste 2-genstande opnår ligeledes normalt problemfrit en reeksporttilladelse. Eventuelle omkostninger, der opkræves at de danske myndigheder i forbindelse med udstedelse af en reeksporttilladelse, vil blive pålagt købers faktura.

D: I forbindelse med eksport til lande uden for EU kan særlige regler gøre sig gældende ifm. den efterfølgende import, og køber opfordres til at indhente oplysninger fra egne myndigheder.

15 MANGLER VED KØBTE GENSTANDE

- 15.1 Købelovens mangelsregler kan finde anvendelse. Nedenfor er angivet et ikke udtømmende uddrag af købers mangelsbeføjelser.
- 15.2 Køber er berettiget til at annullere et køb, hvis beskrivelsen har været behæftet med væsentlige fejl, der har ført til et højere hammerslag, end en korrekt beskrivelse ville have resulteret i. I sådanne tilfælde vil den samlede købesum blive refunderet. Køber kan ikke kræve betaling af renter af købesummen eller kræve dækning af anden udgift eller tab.
- 15.3 Et køb kan ikke annulleres, og køber kan ikke kræve købesummen refunderet eller rejse noget andet krav mod BRK, hvis beskrivelsen af genstanden er i overensstemmelse med punkt 2, eller hvis en påvisning af falskneri havde krævet brug af videnskabelige metoder, der enten ikke var tilgængelige på salgstidspunktet, havde været uforholdsmæssigt omkostningskrævende at anvende eller havde ført til beskadigelse af den pågældende genstand.
- 15.4 Krav om annullering af et køb skal meddeles BRK, når køber er blevet bekendt med det forhold, der berettiger køber til at annullere købet, dog senest to år fra den seneste afhentningsdato efter punkt 12.4. Den købte genstand skal returneres til BRK i samme stand som på hammerslagstidspunktet. Overholdes disse betingelser ikke, mister køber retten til at annullere købet og kan ikke kræve købesummen refunderet. Køber er selv ansvarlig for at betale de omkostninger, der er forbundet med returnering af genstanden.

16 INDSIGELSES- OG ANSVARSBEGRÆNSNING

- 16.1 BRK tager forbehold for fejl, tekniske vanskeligheder samt udefrakommende misbrug eller forstyrrende påvirkning under auktionen. Budgetgiver kan ikke rejse noget krav mod BRK som følge heraf.
- 16.2 Køber er i alle tilfælde selv ansvarlig for korrekt betaling af moms og andre afgifter, gebyrer mv. i overensstemmelse med danske og udenlandske regler.
- 16.3 Medmindre andet fremgår af disse købsvilkår, kan BRK aldrig blive ansvarlig for budgetgivers/købers driftstab, avancetab, andre indirekte tab eller følgeskader.

17 PERSONDATAPOLITIK

- 17.1 Det er vigtigt for BRK at sikre fortrolighed og sikkerhed omkring budgetgivers/købers personlige oplysninger. Persondatapolitikken fremgår af bruun-rasmussen.dk.

18 KLAGE, TVISTLØSNING OG LOVVALG

- 18.1 Har budgetgiver/køber en klage, kan der altid rettes henvendelse til BRK.
- 18.2 Lykkes det ikke at finde en løsning, kan forbrugere sende en klage til Nævnenes Hus, Toldboden 2, 8800 Viborg, e-mail: naevneneshus.dk. Forbrugere med bopæl i et andet EU-land end Danmark kan klage til EU-Kommissionens online klageportal via hjemmesiden: <http://ec.europa.eu/odr>.
- 18.3 Tvister skal indbringes i Danmark ved Københavns Byret, jf. dog punkt 18.2. I forbrugerforhold gælder de ufravigelige værnetingsregler.

Bruun Rasmussen Kunstauktioner

Rev. 08.22

CONDITIONS OF PURCHASE – LIVE AUCTIONS

These conditions of purchase represent Bruun Rasmussen Kunstauktioner A/S' ("BRK") conditions of purchase for live auctions and are effective from 1 January 2017. BRK may modify the conditions of purchase at any time.

By bidding, the bidder/buyer accepts the current conditions of purchase as they appear on bruun-rasmussen.dk. The conditions of purchase are applicable to both business owners and consumers.

BEFORE THE AUCTION

1 VALUATION OF ITEMS

- 1.1 All the offered items are valued by BRK. The valuation is an estimate based on the expected hammer price, see paragraph 5.3. The estimate is based on the previous sale of similar items as well as BRK's past experience. The hammer price can therefore be higher or lower than the estimated price.

2 DESCRIPTION OF ITEMS

- 2.1 Items up for auction are presented with photographs and descriptions in catalogues and on bruun-rasmussen.dk. The description is worded according to the best of BRK's knowledge and based on detailed research in accordance with the prevailing views among experts at the time of sale.
- 2.2 The items up for auction are of an age and nature that often mean that they are in a worn, repaired or damaged condition. As a starting point everything is sold as used items. For this reason, the descriptions in the catalogue or at bruun-rasmussen.dk do not include a statement regarding the above or the condition of the item.
- 2.3 In some cases, BRK may choose to describe an item's provenance. Such a description is made if a former owner is publicly known and/or if the story of previous ownership sheds further light on the item and its background. In other cases, such information is left out of the description, for instance to meet the seller's wish for privacy.
- 2.4 It is possible that the estimate and description are revised prior to the auction. Changes are published on BRK's website.

3 PREVIEW

- 3.1 Items up for auction are presented prior to the auction in one of BRK's showrooms. Potential bidders are encouraged to inspect the items closely and are responsible for determining the condition of the items at these previews, where they also have the opportunity to consult with the valuation experts.
- 3.2 If a potential buyer does not have the opportunity to inspect the item personally, a condition report can be drafted in most cases. The description in this report has been made according to BRK's honest conviction but is not based on scientific studies. A condition report only serves as an identification and is meant as an aid to bidders who do not have the opportunity to inspect the item at the preview.

DURING THE AUCTION

4 THE ROLE OF BRK

- 4.1 The sale of an item is facilitated by BRK on behalf of the seller, and BRK always sells items up for auction at the highest price offered during the bidding round.

- 4.2 Items up for auction can have a reserve price that has been agreed upon with the seller. The price is confidential and the item cannot be sold below this price.

- 4.3 The live auctions are presided over by one of the Danish Ministry of Justice's appointed auctioneers, ensuring that the auctions proceed correctly and lawfully.

5 BIDDING

- 5.1 The currency used while the auctions take place is Danish kroner. The approximate amount in euro/US dollars is shown on screens in the saleroom and also on request.
- 5.2 The auctioneer determines the size of the bid increment and the pace of the auction. Bid increments usually rise by 5% - 10% compared to the previous bid. Approximately 50-100 auction lots are sold per hour.
- 5.3 The hammer price refers both to the gavel used by the auctioneer that signifies the end of a bidding round on an item and to the price (bidding amount) that the item up for auction is sold for. See paragraph 7 regarding amounts added to the hammer price.
- 5.4 The buyer is the bidder that submits the highest bid, thereby obtaining the hammer price. At the moment the hammer price is determined, a binding purchase/sale agreement is entered into based on these conditions of purchase.
- 5.5 If bids are made on behalf of others, the bidder serves as surety for the transaction.
- 5.6 Items are purchased in their present state and condition, and regardless of the type of bidding the buyer has no right to cancel his purchase, neither under the Danish Consumer Contracts Act.
- 5.7 Bidders are required, in accordance with BRK's instructions, to identify themselves and document their ability to pay, for instance by registration of a valid debit/credit card, bank guarantee or a deposit.
- 5.8 BRK may refuse to accept a bid if a sufficient guarantee of the bidder's ability to pay is not provided, or if the bidder has previously defaulted on payment obligations on purchases from BRK.
- 5.9 The overseeing auctioneer will, in consultation with the auctioneer at the podium, decide what to do in matters of dispute concerning a bidding round.

6 TYPES OF BIDDING

- 6.1 Bidding options:

IN PERSON:

Registration and obtaining the bidding paddle take place at the entrance to the saleroom. When the bidder wishes to bid, it is signalled to the auctioneer on the podium by raising the bidding paddle in the air and clearly displaying its number.

COMMISSION BIDS:

The intended maximum bid can be submitted via bruun-rasmussen.dk until the start of the auction or by e-mail, fax or phone, so that the bid is received no later than 24 hours prior to the start of the auction. A commission agent bids on behalf of the bidder within the limits of the stated maximum bid. The commission agent will always bid the lowest possible amount to achieve the hammer price.

TELEPHONE BID:

With certain items it is possible to have a BRK employee call the bidder over the phone. The employee will then bid on behalf of the bidder during the auction. The service can be booked via bruun-rasmussen.dk up until three hours before the auction is set to begin.

LIVE BIDDING:

It is possible to follow the auction live and bid on the auction lots via bruun-rasmussen.dk.

PRE-AUCTION:

Some live auctions are preceded by an online auction. The highest bids from the online auction then represent the starting bids at the following live auction.

AFTER THE AUCTION

7 AMOUNTS ADDED TO THE HAMMER PRICE

7.1 In addition to the hammer price, see paragraph 5.3, the buyer pays a buyer's premium for the individual items as well as the other amounts described below if the conditions for these are applicable. The total amount that the buyer pays to BRK is called the "purchase price".

7.1.1 Buyer's Premium: The hammer price always includes an additional fee to BRK. At the live auctions, the fee is 25,6% of the hammer price + VAT of the fee, 32% in total. For stamps and coins, the fee is 20% of the hammer price + VAT of the fee, a total of 25%.

7.1.2 "LIVE Bidding": BRK's "LIVE Bidding" software is free to use for bidders on bruun-rasmussen.dk.

7.1.3 Full VAT: Certain items are sold at auction in accordance with the current rules regarding full VAT. In such a situation, a VAT of 25% is imposed on both the hammer price and the buyer's premium. These items are marked in the catalogue and on bruun-rasmussen.dk with the symbol "***", or with the text: "This item is subject to full VAT".

7.1.4 Artist's Resale Right: In accordance with Danish copyright law, a royalty fee covering the Artist's Resale Right has to be charged for works by newer Danish artists, and some foreign artists, who are either alive or have not been dead for more than 70 years. The royalty fee covering the Artist's Resale Right is charged on behalf of VISDA (Visual Rights Denmark). These works are marked "ARR" in the printed catalogue, and on bruun-rasmussen.dk the description of the works includes the text: "This lot is subject to the Artist's Resale Right". The royalty fee covering the Artist's Resale Right is added to the hammer price + the buyer's premium (excluding VAT) if the amount exceeds EUR 300, as indicated below:

Hammer price + buyer's premium (ex. VAT)	Payment Rate
300,01 - 50,000 euro	5%
50,000,01 - 200,000 euro	3%
200,000,01 - 350,000 euro	1%
350,000,01 - 500,000 euro	0.5%
over 500,000 euro	0.25%

The royalty fee covering the Artist's Resale Right cannot exceed EUR 12,500 (excluding VAT) for each item. The fee must be paid in Danish kroner, and the conversion rate (EUR/DKK) is set by VISDA.

7.1.5 Debit/Credit Card Fee: Amounts Added to the Hammer Price: BRK reserves the right to charge the debit/credit card fees imposed by the payment services companies. The rates will appear when bidding on bruun-rasmussen.dk and at payment.

8 PAYMENT DEADLINE

8.1 The purchase price falls due after the hammer price has been determined, and then the buyer has eight days to pay BRK the purchase price.

9 PAYMENT METHODS

9.1 The payment can be made in the following ways:

A: With debit/credit card (Visa, MasterCard, Maestro, Diners Club, China UnionPay and JCB) or cash (up to DKK 19.999) in the saleroom or subsequently at one of

BRK's locations. Please note that we do not accept EUR 500 banknotes.

B: With debit/credit card (Dankort, Visa, MasterCard, Diners Club and JCB) via BRK's website on the buyer's personal page.

C: By bank transfer into BRK's account with Danske Bank: 4183 4310970638 - Swift/BIC: DABADKKK - IBAN: DK4130004310970638.

10 VAT EXEMPTION, PAYMENT & DEPOSIT

10.1 Some buyers can choose which type of VAT should apply to the transaction. The choice has to be communicated to BRK no later than two working days after the purchase and cannot be changed subsequently.

A: Businesses in Denmark registered for VAT can decide that the transaction is to be conducted in accordance with the rules for full VAT, see paragraph 7.1.3.

B: Businesses registered for VAT in another EU Member State can be exempted from paying Danish VAT if it can be proved that the item has been transported to the foreign address that the buyer has registered with BRK and which is written on the invoice. In such cases, the VAT should be settled according to the rules applicable in the country where the buyer is registered for VAT. It is advisable to consult with the local authorities. The buyer can decide not to be exempt from regular VAT and instead pay Danish VAT on second-hand goods/full VAT.

C: Buyers residing outside the EU can be exempted from Danish VAT if it can be proved that the item has been transported out of the EU. To the extent possible and for a fee, BRK can issue the necessary export documents for the customs authorities. The buyer may decide not to be exempt from regular VAT and instead pay Danish VAT on second-hand goods/full VAT.

10.2 Companies registered for VAT in another EU Member State and buyers residing outside the EU must deposit the Danish VAT on the amount invoiced with BRK until the export process has been completed in a documented, lawful fashion. If the export is undertaken by one of BRK's authorized forwarding agents, the VAT does not have to be deposited. See the list of authorized forwarding agents on bruun-rasmussen.dk.

11 OVERDUE PAYMENTS

11.1 If payment is made after a deadline, including the deadline specified in paragraph 8, interest on overdue payments will be charged and estimated in accordance with the Danish Central Bank's official lending rate + 8% per year on the amount due.

11.2 If the purchase price, including interest, has still not been paid ten days after the demand for payment has been made, BRK is entitled to seek the purchase price paid by making a set-off against the deposit/by drawing on the bank guarantee or to cancel the purchase.

11.3 If the purchase is cancelled, BRK is entitled to sell the item at a new auction and demand the costs and any difference between the new and the earlier hammer price (including the buyer's premium) covered by the defaulting buyer.

11.4 In addition to debt collection, BRK may seek recovery of all due claims (including costs) not paid in a timely manner in the following ways:

A: Making the buyer cover the costs of selling items consigned to auction by or on behalf of the buyer. The sale can be conducted without regard to an agreed reserve price. Items consigned for auction cannot be collected as long as overdue debts are unpaid.

B: Seizing the buyer's remaining balance with BRK, including the balance from the sale of items consigned by or on behalf of the buyer, regardless of whether such receivables derive from auction sales prior to or after the date of the buyer's default on the payment.

12 PICK-UP & COLLECTION

12.1 The title to a purchased item passes to the buyer when the full purchase price, including any interest and fees, has been paid, and only then can the collection of an item take place.

12.2 In connection with the collection of a purchased item, BRK reserves the right to demand satisfactory documentation that the person who wants to pick up the item is either the buyer himself/herself or authorized by the buyer to receive the item on his/her behalf.

12.3 The collection of certain weapons requires presentation of a valid weapons certificate. Items with such requirements are listed with the text: "The purchase of this item requires the presentation of a valid weapons certificate" in the catalogue and on bruun-rasmussen.dk.

12.4 Purchased items are stored after the auction at the buyer's expense and risk. Pick-up must take place no later than eight working days after the last auction day.

12.5 If the item(s) is/are not picked up on time, the purchased items will be transported to a warehouse at the buyer's risk and expense. The transport costs are DKK 150 including VAT per item and the storage costs are DKK 150 including VAT per item for each week or part of a week. If an item is left unclaimed for an amount of time that results in the storage costs exceeding the value of the item, BRK will be entitled to, at the buyer's expense and risk and without regard to the reserve price, sell the item at an auction or privately. The buyer is still liable for the costs of transportation and storage not covered by such sale.

12.6 In accordance with current anti-money laundering laws, the buyer must in certain cases submit personal information and present a photo ID to BRK before the buyer can have the purchased item placed in his possession.

13 SHIPPING

13.1 If the buyer is unable to pick up the purchased item, BRK offers to pack and arrange delivery either by mail or by freight forwarder at the buyer's risk and expense. See paragraph 12.2 regarding identification.

14 EXPORT LICENSE

14.1 To ensure that Danish cultural heritage of vital importance remains in Denmark, the Danish Cultural Assets Commission can place an export ban on certain items. If the buyer wishes to export an item that is subject to an export ban in Denmark, the purchase will be cancelled and the Danish Cultural Assets Commission is obliged to acquire ownership of the item for the price obtained at auction. The buyer cannot raise any claims against BRK as a result of an export ban.

14.2 Certain items are included in the Washington Convention, also known as CITES. The purpose of CITES is to stop the trade of items made with endangered species and flora. If the item is included in the Washington Convention, CITES, Appendix 1, this will appear in the description of the item on bruun-rasmussen.dk and be marked with the symbol "☉" in the catalogue. The following rules are applicable:

A: Items that are included in the Washington Convention, CITES, Appendix 1, can only be traded when a dispensation in the form of a CITES certificate has been obtained. BRK obtains the required certificate from the Danish Nature Agency that allows trade and export to countries within the EU. Items that were produced before 1947 can, however, be freely traded within the EU without a certificate.

B: It is only items included in the Washington Convention, CITES, Appendix 1 that are marked individually on bruun-rasmussen.dk and in our catalogue. Items included in the Washington Convention, CITES, Appendix 2, which can be freely sold and transported within the EU, are not individually marked.

C: Export to countries outside the EU must, regardless of the year of the item's production, always procure a CITES re-export permit from the Danish Nature Agency if the item is included in the Washington Convention, Appendix 1 and 2. This export permit can usually be

obtained without problems, if the item is either sold with a CITES certificate or was made prior to 1947. Appendix 2 items usually also receive a re-export permit without problems. Any fees charged by the Danish authorities in connection with the issuance of a re-export permit will be added to the buyer's invoice.
D: In connection with export to other countries outside the EU, special rules may apply concerning the subsequent import, and the buyer is encouraged to consult the relevant local authorities about this issue.

15 DEFECTS IN THE PURCHASED ITEMS

15.1 The lack of conformity rules of the Danish Sale of Goods Act may apply. Below is a non-exhaustive excerpt of the buyer's remedies in regard to lack of conformity.

15.2 The buyer is entitled to cancel a purchase if the description contained significant errors that have led to a higher hammer price than a correct description would have resulted in. In such cases, the total purchase price will be refunded. The buyer cannot demand payment of interest on the purchase price or demand payment of any other expenses or losses.

15.3 A purchase cannot be cancelled and the buyer cannot demand a refund of the purchase price or raise any other claims against BRK if the description of the item is in compliance with paragraph 15.2. The same applies if evidence of forgery has required the use of scientific methods that were either not available at the time of sale, were excessively costly to use or led to the damage of the item in question.

15.4 Claims for a cancellation of a purchase must be notified to BRK when the buyer has discovered the fact that entitles the buyer to cancel the purchase. This notice, however, has to be given no later than two years after the final pick-up date according to paragraph 12.4. The item purchased must be returned to BRK in the same condition as it was on the day it was sold at auction. If these conditions are not met, the buyer loses the right to cancel the purchase and cannot claim a refund of the purchase price. The buyer is responsible for paying the costs associated with the return of the item.

16 OBJECTIONS & LIMITATIONS OF LIABILITY

16.1 BRK is aware that errors, technical difficulties and external abuse or disruptive influences may occur during the auction. Bidders cannot raise any claims against BRK as a result of such events.

16.2 The buyer is always responsible for the correct payment of VAT and other costs, fees etc. in accordance with Danish and foreign regulations.

16.3 Unless otherwise stated in these conditions of purchase, BRK may never be held liable for bidders'/buyers' operating loss, loss of profits, other indirect losses or consequential loss.

17 PRIVACY POLICY

17.1 It is important to BRK to ensure confidentiality and security regarding the bidder's/buyer's personal information. The privacy policy can be found on bruun-rasmussen.dk.

18 COMPLAINTS, DISPUTE RESOLUTION AND APPLICABLE LAW

18.1 BRK can always be contacted if the bidder/buyer has a complaint.

18.2 If the dispute cannot be resolved, the consumer can submit a complaint to the Complaint Resolution Centre, Nævnenes Hus, Toldboden 2, 8800 Viborg, Denmark, email: naevneshus.dk. Consumers residing in another EU country than Denmark can submit their complaint to the European Commission's Online Dispute Resolution platform via the website: <http://ec.europa.eu/odr>.

18.3 In Denmark, disputes must be brought before the City Court of Copenhagen, but see paragraphs 18.2. The mandatory rules on jurisdiction apply to consumer interests.

Bruun Rasmussen Kunstauktioner

The above is an English translation of the Danish version of the Conditions of Purchase. In case of a dispute, only the Danish version of the present Conditions of Purchase of Bruun Rasmussen is valid.

Rev. 08.22

ADDRESSES

BRUUN RASMUSSEN AUCTIONEERS

COPENHAGEN – BREDGADE

BREDGADE 33, DK-1260 COPENHAGEN K
+45 8818 1111 / info@bruun-rasmussen.dk

COPENHAGEN – SUNDKROGSGADE

SUNDKROGSGADE 30, DK-2150 NORDHAVN
+45 8818 1111 / info@bruun-rasmussen.dk

GLOSTRUP

PAUL BERGSØES VEJ 20B, DK-2600 GLOSTRUP
+45 8818 1111 / info@bruun-rasmussen.dk

AARHUS

SØREN FRICHS VEJ 34D, DK-8230 ÅBYHØJ
+45 8818 1100 / aarhus@bruun-rasmussen.dk

FYN

NICK MESSMANN
+45 8818 1232 / nic@bruun-rasmussen.dk

REPRESENTATIVES

FRANCE & BELGIUM

DITTE HERBORG KROGH · PARIS
+33 6 6185 4564 / dhk@bruun-rasmussen.dk

SOUTHERN FRANCE & LUXEMBOURG

PETER KOCH
+45 4045 3403 / p.koch@bruun-rasmussen.dk

GERMANY

NICK MESSMANN
+45 8818 1232 / nic@bruun-rasmussen.dk

USA

BENEDICTE HALLOWELL
+1 617 566 7333 / b.hallowell@bruun-rasmussen.dk

CONTACT DIRECTLY

KONTAKT DIREKTE

HOVEDNUMMER / MAIN NUMBER

Bruun Rasmussen Auctioneers +45 8818 1111

ADMINISTRATION

Jakob Dupont, CEO +45 8818 1081
dupont@bruun-rasmussen.dk

KUNDESERVICE / CUSTOMER SERVICE

kundeservice@bruun-rasmussen.dk +45 8818 1010
customerservice@bruun-rasmussen.dk +45 8818 1010

KOMMISSIONER / COMMISSIONS

Lise Winther Wobido +45 8818 1013
Anja Bering Hansen +45 8818 1028
bids@bruun-rasmussen.dk

BESTILLING AF KATALOGER / CATALOGUE REQUESTS

Kundeservice / Customer service +45 8818 1111

AUKTIONS RÅDGIVNING / AUCTION GUIDANCE

Franziska Kampmann +45 8818 1026
fka@bruun-rasmussen.dk

SHIPPING

shipping@bruun-rasmussen.dk +45 8818 1055

VURDERING OG INFORMATION / VALUATION AND INFORMATION

INDBOVURDERINGER / VALUATION AT YOUR HOME

Liselotte Toxværd Møller +45 8818 1234
ltm@bruun-rasmussen.dk

Hans Ruben +45 8818 1231
hru@bruun-rasmussen.dk

Ralph Lexner +45 8818 1161
rl@bruun-rasmussen.dk

Kasper Nielsen +45 8818 1121
kn@bruun-rasmussen.dk

ARMBÅNDSURE / WRISTWATCHES

Vilhelm Islandi Bramsen +45 8818 1239
vib@bruun-rasmussen.dk

BØGER / BOOKS

Emma Marie Poulsen +45 8818 1217
emp@bruun-rasmussen.dk

FRIMÆRKER / STAMPS

Christian Grundtvig +45 8818 1214
cg@bruun-rasmussen.dk

MØNTER / COINS

Michael Märcher +45 8818 1202
mm@bruun-rasmussen.dk

MODERNE DESIGN / MODERN DESIGN

Peter Kjelgaard Jensen +45 8818 1191
pkj@bruun-rasmussen.dk

MODERNE KUNST / MODERN ART

Niels Raben +45 8818 1181
nr@bruun-rasmussen.dk

Niels Boe-Hauggaard +45 8818 1182
nbh@bruun-rasmussen.dk

MODERNE SØLV / MODERN SILVER

Amalie Hansen +45 8818 1194
amh@bruun-rasmussen.dk

PORCELÆN, GLAS OG ASIATISK KUNST / CERAMICS, GLASS AND ASIAN ART

Ralph Lexner +45 8818 1161
rl@bruun-rasmussen.dk

Line Hjorth Langkjær +45 8818 1166
lla@bruun-rasmussen.dk

RUSSISK KUNST / RUSSIAN ART

Martin Hans Borg +45 8818 1128
mhb@bruun-rasmussen.dk

SMYKKER / JEWELLERY

Katrin Mikkelsen Sørensen +45 8818 1174
kms@bruun-rasmussen.dk

TÆPPER / CARPETS

Henrik Schleppegrell +45 8818 1145
hsc@bruun-rasmussen.dk

VIN / WINE

Thomas Rosendahl Andersen +45 8818 1206
tra@bruun-rasmussen.dk

VÅBEN / WEAPONS

Ralph Lexner +45 8818 1161
rl@bruun-rasmussen.dk

ÆLDRE KUNST / FINE ART

Julie Arendse Voss +45 8818 1123
jav@bruun-rasmussen.dk

Birte Stokholm +45 8818 1122
bst@bruun-rasmussen.dk

ÆLDRE MØBLER / FURNITURE

Henrik Schleppegrell +45 8818 1145
hsc@bruun-rasmussen.dk

Anders Fredsted +45 8818 1142
afr@bruun-rasmussen.dk

ÆLDRE SØLV / SILVER

Heidi Schophuus Jensen +45 8818 1163
hsj@bruun-rasmussen.dk

COMMISSION BIDS

KOMMISSIONSBUD

It is possible to leave commission bids if you can not be present at the auction yourself. This service is free of charge.

When leaving a commission bid, you are instructing our customer service to bid up to a specified amount on your behalf.

The situation can occur that another buyer has already bid the same as you were prepared to. Are you then willing to bid further? If not the lot will be sold to another buyer.

If you do not wish to exceed your bid then write "Max", for maximum, next to the amount. You can also allow us to raise your bid by approx. 15% or approx. 25%.

The hammer price may be higher or lower than the estimated price, so it is possible to buy below the estimate. Bruun Rasmussen will always buy at the lowest price possible, as if you yourself had been present at the auction.

All commission bids are strictly confidential.

Commission bids must be submitted no later than **24 hours** prior to the start of the auction.

HOW TO MAKE A COMMISSION BID:

Complete the commission form with all pertinent information.

Indicate the lot number.

Indicate the amount you are prepared to bid.

Should this amount be the absolute maximum, please write "Max" in the appropriate column.

You can also allow us to bid by up to approx. 15% or approx. 25% more by indicating so.

Sign the commission form and make sure that Bruun Rasmussen receives it **24 hours** prior to the start of the auction.

If the information should be insufficient, Bruun Rasmussen can abstain from bidding. Bruun Rasmussen can not be held responsible for error in bidding or failure to execute bids.

INTERNET:

Commission bids can be submitted via website bruun-rasmussen.dk directly from the page with the item you want to submit a bid for.

Deadline for submissions of bids via the website is **3 hours** prior to the start of the auction.

Submitted bids are shown under "Your bids" when you are logged in. Please contact technical support on +45 8818 1114 for questions about the registration and submission of bids on the website.

For additional information, please consult "Conditions of Purchase" §1.

TELEPHONE BIDDING:

Should you wish to bid at auction by telephone, please inform Bruun Rasmussen of your name and telephone number, as well as which catalogue numbers you are interested in, no later than **3 hours** prior to the start of the auction. You will then be contacted shortly before the relevant lot comes under the hammer, thereby allowing you to participate without being in the auction room yourself.

For additional information, please consult "Conditions of Purchase" §1.

Det er muligt at afgive kommissionsbud, hvis De ikke selv kan være til stede på auktionens dag. Denne service er gratis.

Når De afgiver en kommission, beder De vores kundeservice på Deres vegne byde op til et af Dem bestemt beløb i hammerslag.

Der kan opstå den situation, at en anden køber allerede har budt det beløb, som De ønsker at afgive. Er De da villig til at gå et bud højere eller er De indforstået med at nummeret sælges til anden side?

Ønsker De ikke at byde højere så skriv "Max" ud for beløbet. Er De i tvivl om hvor højt De vil byde, kan De hæve budet med op til ca. 15% eller ca. 25%.

Salgsprisen kan blive højere eller lavere end vurderingen, så der er også mulighed for at købe til under den angivne vurdering. Vor kundeservice køber altid så billigt som muligt til Dem, som havde De selv været tilstede på auktionen.

Alle kommissioner behandles strengt fortroligt.

Kommissionsbud skal være Bruun Rasmussen i hænde senest **24 timer** før auktionens start.

SÅDAN BYDER DE:

Udfyld blanketten kommissionsbud med alle oplysninger.

Angiv katalognummer.

Angiv beløbet De ønsker at byde.

Er dette Deres absolutte maximum bedes De anføre "Max" i kolonnen.

De kan også forhøje Deres bud med henholdsvis ca. 15% eller ca. 25%, ved at indikere dette i kolonnen.

De bedes underskrive kommissionsblanketten og sikre Dem, at Bruun Rasmussen modtager den senest **24 timer** før auktionens start.

Hvis Deres oplysninger ikke er tilstrækkelige, kan Bruun Rasmussen undlade at byde for Dem, ligesom Bruun Rasmussen ikke kan gøres ansvarlig for fejl ved budgivningen.

INTERNET:

Kommissionsbud kan afgives på hjemmesiden bruun-rasmussen.dk direkte fra siden med den effekt, De ønsker at byde på.

Seneste afgivelse af bud via hjemmesiden er **3 timer** før auktionens start.

Afgivne bud kan ses på hjemmesiden under "Deres bud", når de er logget ind. Kontakt teknisk support på 8818 1114 for spørgsmål om registrering og budgivning via internettet.

For yderligere information, se "Købskonditioner", §1.

TELEFONBUD:

Såfremt De ønsker at byde pr. telefon, bedes De oplyse Bruun Rasmussen Deres navn og telefonnummer samt hvilke katalognumre, De ønsker at byde på, senest **3 timer** før auktionens start. De vil så blive ringet op kort før, den aktuelle vare kommer under hammeren, og De kan på denne måde deltage i auktionen uden selv at være til stede.

For yderligere information, se "Købskonditioner" på bruun-rasmussen.dk under "Guide".

COMMISSION BIDS

KOMMISSIONSBUD

BREDGADE

Skal være Bruun Rasmussen i hænde senest **24 timer** før auktionens start.
Must be submitted no later than 24 hours prior to the start of the auction.

AUKTION NR AUCTION NO: **914**

Navn Name: *

Adresse Address: *

Postnr./by City: *

Land Country: * Fax:

Tel: *

e-mail: CVR-nr. VAT No.:

Bank: Konto nr. Acct. No.:

Adresse Address:

Postnr./By City: Land Country:

Tel: Kontaktperson Contact:

Obligatoriske felter er mærket med en stjerne * *Mandatory fields are marked with an asterisk **

Undertegnede giver hermed fuldmagt til Bruun Rasmussen Kunstauktioner A/S om på mine vegne at købe nedennævnte katalognumre så fordelagtigt som muligt, inden for det af mig anførte beløb, i hammerslag.
I hereby request that Bruun Rasmussen bid on my behalf on the following lots up at the prices indicated below.

Undertegnede har udfyldt ovennævnte med de ønskede oplysninger, samt har accepteret købskonditionerne.
The undersigned has supplied the required information and agrees to be bound by the conditions of purchase.

Signatur: * B.R. kunde-nr. Client No.:

Jeg ønsker at modtage salgsresultater på de emner jeg har budt på via email dagligt efter auktion
I wish to receive sales results on the items I have been bidding on via e-mail every day after the auction

på e-mail adressen *on this e-mail address:*

Katalog nr. Lot. No.	Beskrivelse Description	Bud kr. Bid DKK	Max	+15%	+25%

BRUUN RASMUSSEN KUNSTAUKTIONER A/S

Bredgade 33 · DK-1260 København K · Tel +45 8818 1111 · Fax +45 8818 1112 · bids@bruun-rasmussen.dk · bruun-rasmussen.dk

Fortsættes næste side *Please turn over*





THE ART OF LUXURY

