

DESIGN



BRUUN RASMUSSEN
PART OF THE BONHAMS NETWORK

DESIGN



LIVEAUKTION 917

Torsdag 7. december kl. 16

EFTERSYN

Onsdag 29. november kl. 15 - 18

Torsdag 30. november kl. 11 - 18

Fredag 1. december kl. 11 - 18

Lørdag 2. december kl. 10 - 15

eller efter aftale

BRUUN RASMUSSEN

PART OF THE BONHAMS NETWORK

Nørgaardsvej 3 · DK-2800 Lyngby · Tel +45 8818 1111

info@bruun-rasmussen.dk · bruun-rasmussen.com



Kom til eftersyn, guidede ture og "gallery talks"!

Onsdag 29. november 15 - 18

- Kl. 15 Eftersynet åbner
- Kl. 16 "Højdepunkter under hammeren" – en guidet tur i eftersynet med fokus på ældre og moderne kunst ved vores eksperter Sofie Normann Christensen og Kristina Ulfvik.

Torsdag 30. november 11 - 18

Kaffevogn

- Kl. 14 "Højdepunkter under hammeren" – en guidet tur i eftersynet med fokus på ældre og moderne kunst ved vores eksperter Julie Arendse Voss og Kathrine Eriksen.
- Kl. 15 Gallery talk – CoBrA's 75-års jubilæum ved ekspert Niels Raben i dialog med Jacob Thage, tidligere direktør på Museum Jorn.
- Kl. 16 Live-musik og bobler

Fredag 1. december 11 - 18

Kaffevogn

- Kl. 14 "Højdepunkter under hammeren" – en guidet tur i eftersynet med fokus på ure og smykker ved vores eksperter Frederik Plum og Daniel Foldschack.
- Kl. 15 Gallery talk – CoBrA's 75-års jubilæum ved ekspert Niels Raben.
- Kl. 16 "Kærs Kunstkalender" – Peter Kær præsenterer årets kunstkalender, der er skabt i samarbejde med Statens Museum for Kunst.

Lørdag 2. december 10 - 15

Kaffevogn

- Kl. 12 Gallery talk – Kongeligt sølv og Pietro Krohns "Hejrestel" ved ekspert Martin Hans Borg.
- Kl. 13 "Højdepunkter under hammeren" – en guidet tur i eftersynet med fokus på design ved ekspert Peter Kjelgaard.

NB! Alle talks og ture begynder i "Speakers Corner" i udstillingsområdet.

AUKTIONSKALENDER

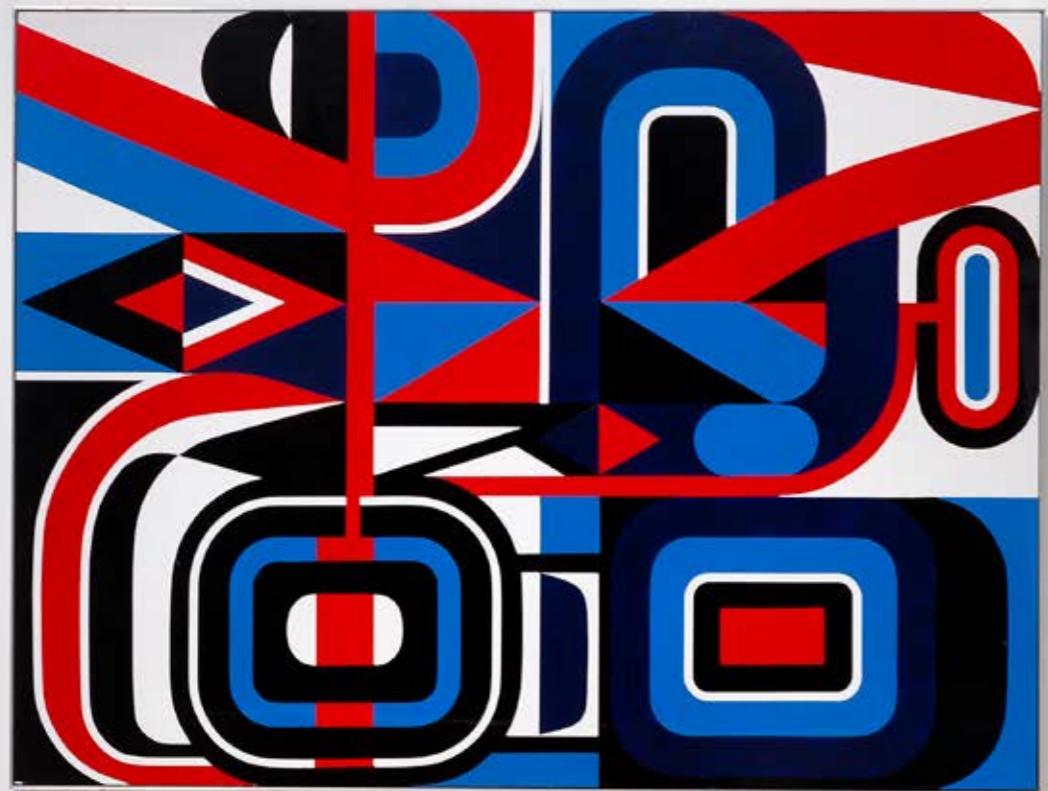
Tirsdag	5. december - Modern Art	
	kl. 16 Malerier og skulpturer	1 - 156
	Grafik	157 - 173
	kl. 19 CoBrA	174 - 334
Onsdag	6. december - Antiques	
	kl. 14 Asiatisk kunsthåndværk	401 - 428
	Kl. 15 Kunsthåndværk, møbler og tæpper	429 - 517
	Kl. 19 Malerier og tegninger	518 - 611
Torsdag	7. december - Design	
	kl. 16 Kunsthåndværk	612 - 683
	Møbler, lamper og tæpper	684 - 854
	kl. 20 Bordeaux - Netauktion på bruun-rasmussen.dk	
Mandag	11. december - The Art of Luxury	
	kl. 15 Smykker	901 - 1088
	Tasker	1089 - 1105
	kl. 19 Armbåndsure	1106 - 1177

VIGTIG INFORMATION VEDR. BUDGIVNING!

Bonhams' internationale kunder kan også byde med på Bruun Rasmussens aktuelle Liveauktion via Bonhams' hjemmeside: bonhams.com

SIDSTE FRIST FOR AFHENTNING: ONSDAG DEN 20. DECEMBER

Genstande købt på denne auktion skal være betalt senest otte dage efter fakturadatoen og afhentet på Nørgaardsvej 3 i Lyngby senest onsdag den 20. december. I modsat fald bliver de transporteret til Bruun Rasmussens lager på Paul Bergsøes Vej 16 i Glostrup for købers regning og risiko, hvor de kan afhentes fra fredag den 22. december. Transporten koster 150 kr. pr. genstand inkl. moms, og opbevaringen koster 150 kr. pr. genstand pr. påbegyndt uge inkl. moms.



DESIGN



LIVE AUCTION 917

Thursday 7 December 4 pm

PREVIEW

Wednesday 29 November 3 pm - 6 pm

Thursday 30 November 11 am - 6 pm

Friday 1 December 11 am - 6 pm

Saturday 2 December 10 am - 3 pm

or by appointment

BRUUN RASMUSSEN

PART OF THE BONHAMS NETWORK

Nørgaardsvej 3 · DK-2800 Lyngby · Tel +45 8818 1111

info@bruun-rasmussen.dk · bruun-rasmussen.com





DAYS OF SALE

Tuesday	5 December - Modern Art	
	4 pm Paintings and sculptures	1 - 156
	Prints	157 - 173
	7 pm CoBrA	174 - 334
Wednesday	6 December - Antiques	
	2 pm Asian decorative art	401 - 428
	3 pm Decorative art, furniture and carpets	429 - 517
	7 pm Paintings and drawings	518 - 611
Thursday	7 December - Design	
	4 pm Decorative art	612 - 683
	Furniture, lamps and carpets	684 - 854
	8 pm Bordeaux - Online auction at bruun-rasmussen.dk	
Monday	11 December - The Art of Luxury	
	3 pm Jewellery	901 - 1088
	Handbags	1089 - 1105
	7 pm Wristwatches	1106 - 1177

IMPORTANT INFORMATION ABOUT BIDDING AT THE AUCTION

Bonhams' international customers can also bid at Bruun Rasmussen's current Live Auction via Bonhams' website: bonhams.com

DEADLINE FOR CLAIMING ITEMS: WEDNESDAY 20 DECEMBER

Items bought at this auction must be paid no later than eight days from the date of the invoice and claimed at Nørsgaardsvej 3 in Lyngby by Wednesday 20 December at the latest. Otherwise, they will be moved to Bruun Rasmussen's storage facility at Paul Bergsøes Vej 16 in Glostrup at the buyer's expense and risk. Here, they can be picked up from Friday 22 December. This transportation will cost DKK 150 per item VAT included, and storage will cost DKK 150 per item per week VAT included.

Velkommen til Liveauktion i Lyngby!

2023 har været forandringernes år hos Bruun Rasmussen. Den 2. oktober åbnede vi dørene til vores nye hovedkontor på Nørgaardsvej 3 i Lyngby til en begivenhedsrig uge med besøg af Lyngbys borgmester Sofia Osmani, rundvisninger, særudstillinger, kunstforedrag og et brag af en fest fredag med skønne danske sange af Sankt Annæ Pigeor, taler, drinks og musik. Ingen af os havde drømt om, hvilken succes ugen blev – flere end 6.000 kunder, samarbejdspartnere, venner af huset og nye naboer kom forbi. Vi vil gerne benytte lejligheden til at sige mange tak til alle jer, der var med til at fejre åbningen af vores nye auktionshus!

Nu er tiden inde til at afslutte året med en storslået Liveauktion, hvor vi for første gang på den nye lokation i Lyngby svinger hammeren over et væld af kunstværker, enestående designmøbler, sjældne antikviteter, diamantsmykker, klassiske håndtasker og armbåndsure fra førende brands. Auktionen foreløber over fire dage midt i det store udstillingslokale, hvor hele udvalget i ugen op til auktionen vil blive udstillet. Vi glæder os til at byde alle velkommen til årets sidste Liveauktion og indledende eftersyn hos Bruun Rasmussen. Hvis man ikke har mulighed for at deltage personligt i auktionen, er det som altid muligt at byde med via livebidding, telefon eller kommissionsbud.

En af dagene er dedikeret til auktionen ”CoBrA – stærke stemmer i efterkrigstidens Europa“, hvor vi for anden gang i samarbejde med Bonhams’ globale netværk af auktionshuse markerer en af de mest banebrydende kunstretninger i det 20. århundrede. Det er nu 75 år siden, at gruppen af progressive kunstnere stiftede CoBrA på Café Notre Dame i Paris, og på auktionen præsenterer vi en lang række mesterværker af gruppens velkendte navne som Asger Jorn, Pierre Alechinsky, Corneille, Karel Appel, Christian Dotremont og Sonja Ferlov Mancoba. Alle værkerne er præsenteret i et særligt CoBrA-katalog, som kan bestilles på bruun-rasmussen.dk eller købes i vores receptioner.

Vi har i alt udgivet fem auktionskataloger til denne Liveauktion, og i nærværende katalog findes udvalget af moderne design og kunsthåndværk. Med et af højdepunkterne er der dømt jazzmusik og kulturradikal elite. Det gælder Poul Henningsens ”Mignon”-flygel, som han formgav i begyndelsen af 1930’erne til de små jazzscener. Auktionens flygel har været ejet af den entreprenante forelægger Gunnar Bratvold, der stod i spidsen for ”Mobilia” – et tidsskrift, der blev bannerfører for udbredelsen af dansk design. Borupgaard i Nordsjælland dannede ramme om både forlaget og Bratvolds private hjem, og stedet blev centrum for et festligt åndsfællesskab for tidens prominente designere og kunstnere. PH hørte til inderkredsen, og både lysets mester selv og den amerikanske stjernesaxofonist Ben Webster har efter sigendet spillet på flyglet, der havde sin faste plads på Borupgaard. Finn Juhl er til gengæld manden bag et af auktionens andre højdepunkter – et unikabord i absolut museumsklasse, som han af uvisse årsager gav navnet ”Barbe Bleu” efter legenden om en fransk adelsmand med morderiske tendenser. Bordet, der gennem mange år var en del af inventaret i Juhls eget hjem, blev tegnet til en konkurrence hos Fritz Hansen i 1936 og betragtes som hans allerførste registrerede møbel. Spoler vi lidt længere tilbage i dansk designhistorie, lyser Georg Jensens syvarmede sølvlysekronen scenen op. Den blev formgivet i 1919 til den berømte og berygtede svenske finansmand og fabrikant Ivar Kreuger, også kaldet ”The Match King”, der skabte formuer på produktion af tændstikker. Hans interesse for kunst kom til udtryk i en imponerende samling af sølv, som blandt rummede det udbudte vidunder. I 1981 solgte vi hos Bruun Rasmussen lysekronen til nuværende ejer på en auktion (kat.nr. 807, 727 og 616).

Vi glæder os til at byde indenfor i det nye auktionshus til udstilling og auktion!

Jakob Dupont, administrerende direktør og Kasper Nielsen, vurderings- og salgsdirektør

Welcome to Live Auction in Lyngby!

2023 has been a year of change for Bruun Rasmussen. On 2 October, we opened the doors to our new head office at Nørgaardsvej 3 in Lyngby for an eventful week which included a visit from the mayor of Lyngby, Sofia Osmani, guided tours, special exhibitions, art talks and a fabulously festive Friday with beautiful Danish songs performed by Copenhagen Girls’ Choir (Sankt Annæ), speeches, drinks and music. None of us could have imagined just what a success the week would be – with more than 6,000 customers, business partners, friends of the house and new neighbours popping in. We’d like to take this opportunity to say a big thank you to all of you who helped celebrate the opening of our new auction house!

The time has now come to round off the year with a magnificent Live Auction, where, for the first time at our new location in Lyngby, we’ll be swinging the hammer over a multitude of works of art, unique designer furniture, rare antiques, diamond jewellery, classic handbags and wristwatches from leading brands. The auction takes place over four days in the middle of the large exhibition room, where the entire selection will be exhibited in the week leading up to the auction. We look forward to welcoming everyone to the last Live Auction of the year – and the Preview before it – at Bruun Rasmussen. If you’re unable to attend the auction in person, it is, as always, possible to bid via live bidding, over the phone, or to submit a commission bid.

One of the days is dedicated to the “CoBrA – Strong Voices in Post-war Europe” Auction, where, for the second time in collaboration with Bonhams’ global network of auction houses, we’ll be celebrating one of the most pioneering art movements of the 20th century. It is now 75 years since the group of progressive artists founded CoBrA at Café Notre Dame in Paris, and at the auction we’ll be presenting a large number of masterpieces by the group’s well-known names such as Asger Jorn, Pierre Alechinsky, Corneille, Karel Appel, Christian Dotremont and Sonja Ferlov Mancoba. All the works are presented in a special CoBrA catalogue, which can be ordered at bruun-rasmussen.dk or purchased in our receptions.

We’ve published five auction catalogues for this Live Auction, and in this one you’ll find our selection of modern design and decorative art. One of the highlights screams jazz music and the culture-radical elite. Poul Henningsen’s “Mignon” grand piano, which he designed in the early 1930s for the small jazz stages, is the focal point of this true piece of Danish design history. The auction’s grand piano was once owned by the enterprising publisher Gunnar Bratvold, who was at the helm of “Mobilia” – a journal that became the standard-bearer for the dissemination of Danish design. Borupgaard in North Zealand formed the setting for both the publishing house and Bratvold’s private home, not to mention the centre for a festive community of minds for the prominent designers and artists of the day. PH belonged to the inner circle, and both he, the master of lighting himself, and the American star saxophonist Ben Webster are said to have played on the grand piano, which was a permanent fixture at Borupgaard. Finn Juhl, on the other hand, is the man behind one of the other highlights of the auction – a truly unique and museum-worthy table, which, for reasons unknown, he named “Barbe Bleu” after the tale of a French nobleman with murderous tendencies. The table, which for many years was part of the furniture at Juhl’s own home, was designed for a competition arranged by Fritz Hansen in 1936 and is thought to be his very first registered piece of furniture. If we go back a little further in Danish design history, Georg Jensen’s seven-armed silver chandelier illuminates the stage. It was designed in 1919 for the famous (and infamous) Swedish financier and manufacturer Ivar Kreuger, also known as “The Match King”, who made a fortune from the production of matches. His interest in art manifested itself in an impressive collection of silver, which included the wonderful piece up for auction. We sold the chandelier at auction here at Bruun Rasmussen in 1981 to the current owner (cat.no. 807, 727 and 616).

We look forward to welcoming you inside the new auction house for the exhibition and auction!

Jakob Dupont, CEO and Kasper Nielsen, Director of Valuation and Sales

SPECIALISTS IN DECORATIVE ART AND DESIGN



*Head of Department of Modern
Decorative Art and Design*
Peter Kjelgaard Jensen
+45 8818 1191
pkj@bruun-rasmussen.dk



Design
Anna Berger Widenborg
+45 8818 1187
awi@bruun-rasmussen.dk



Design
Andreas Krabbe
+45 8818 1193
ank@bruun-rasmussen.dk



Design
Poul Svalgaard Henriksen
+45 8818 1132
psh@bruun-rasmussen.dk



Design
Anders Bodholt Askman
+45 8818 1198
aba@bruun-rasmussen.dk



Decorative Art
Amalie Hansen
+45 8818 1194
amh@bruun-rasmussen.dk



Design
Klara Johansdotter Hagberg
+45 8818 1236
kjh@bruun-rasmussen.dk



Paintings and Design
Peter Beck – Aarhus
+45 8818 1186
pb@bruun-rasmussen.dk



Director of Valuations and Sales
Kasper Nielsen
+45 8818 1121
kn@bruun-rasmussen.dk



Representative France + Belgium
Ditte Herborg Krogh
+33 6 6185 4564
dhk@bruun-rasmussen.dk



*Global Head of Modern Decorative Art and Design
– Bonhams / USA*
Benjamin Walker
+1 212 710 1306
benjamin.walker@bonhams.com

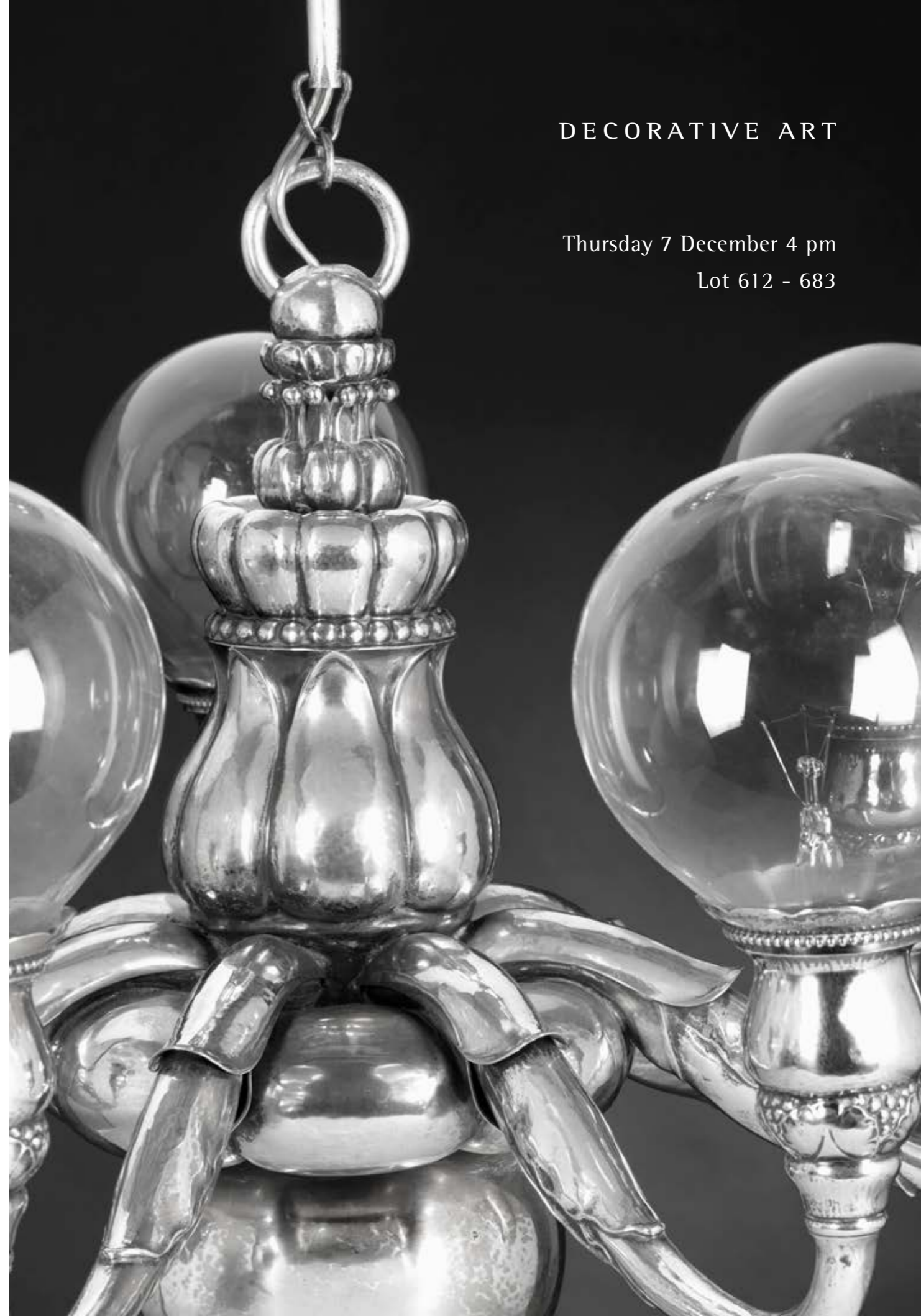


*International Specialist, Europe
– Bonhams / Netherlands*
Marcel Brouwer
+31 (0)6 547 05 086
marcel.brouwer@bonhams.com

DECORATIVE ART

Thursday 7 December 4 pm

Lot 612 - 683





612

**612
GEORG JENSEN**

b. Rådvaad 1866, d. Hellerup 1935

A two-light sterling silver candelabrum. Hammered surface and stylized relief decor. Georg Jensen 1925-1932. Design no. 383 B. Designed 1921. Weight 1770 g. H. 26.5 cm. W. 33 cm. The inner diam. of candle holders 2.5 cm. Provenance: Actor Poul Reumert (b. 1883, d. 1968). Hence by descent within the family.

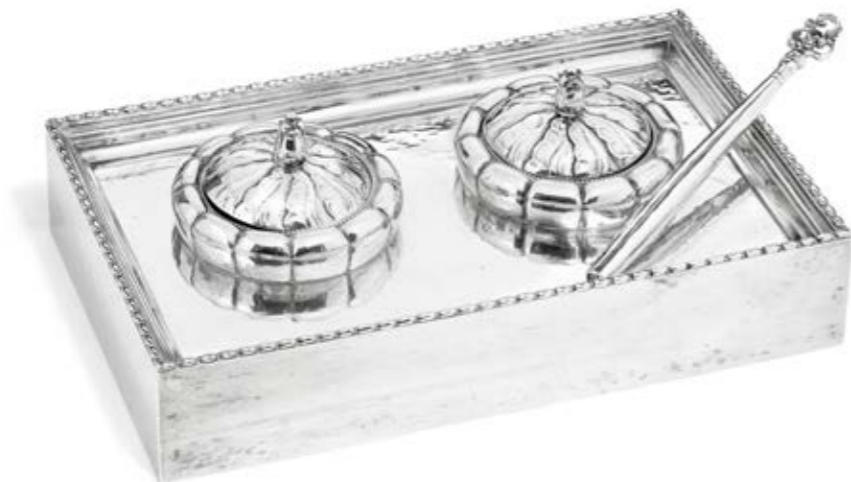
DKK 80,000-100,000 / € 10,500-13,500

**613
GEORG JENSEN**

b. Rådvaad 1866, d. Hellerup 1935

A silver ink stand with hammered surface and beaded rim, accompanied by a sterling silver pen. Two circular compartments for inkpots, hinged covers with stylized foliage and berries. Georg Jensen anno 1920. Design no. 254. H. max. 7 cm. W. 14.3 cm. L. 23 cm. Pen's top with openwork decor in the shape of leaves and grapes. Georg Jensen 1908-1914. L. 15.7 cm. Total weight 983 g. (2)

DKK 12,000-15,000 / € 1,600-2,000



613



614

**614
JOHAN ROHDE**

b. Randers 1856, d. Hellerup 1935

"Acanthus"/"Dronningemønster". Sterling silver cutlery. Georg Jensen 1929-1934 and after 1945. Designed 1917. Weight excluding pieces with steel 3560 g. (129)

Comprising:

- 8 lobster forks
- 12 dinner knives with long handle 22.7 cm.
- 12 dinner forks L. 18.2 cm.
- 8 dinner spoons L. 18.7 cm.
- 12 luncheon knives with long handles L. 20.6 cm.
- 12 luncheon forks L. 16.7 cm.
- 12 dessert spoons L. 17.5 cm.
- 12 pastry forks
- 12 coffee spoons
- 6 butter knives

- 7 long cold cut forks
- 2 short cold cut forks
- 1 bottle opener L. 16.3 cm.
- 1 pie knife L. 23.3 cm.
- 1 compote spoon
- 1 paper knife L. 19.7 cm
- 1 serving spoon L. 15.2 cm.
- 1 serving spoon L. 17.2 cm.
- 1 potato spoon L. 20.4 cm.
- 1 serving spoon with oval bowl L. 22.7 cm.
- 1 steak fork
- 5 salt spoons DKK 25,000-30,000 / € 3,350-4,000

**615
GEORG JENSEN**

b. Rådvaad 1866, d. Hellerup 1935

A circular sterling silver tazza with hammered surface. Openwork stem enchased with foliage, grapes and stylized flowers. Georg Jensen 1925-1932. Design no. 197 C. Weight 1406 g. H. 19.7-19.8 cm. Diam. 25-25.6 cm.

DKK 30,000 / € 4,000



615



616

616
GEORG JENSEN

b. Rådvaed 1866, d. Hellerup 1935

An impressive and rarely offered seven-light silver chandelier with hammered surface. Baluster shape enchased with stylized foliage and berries. Ring support, circular canopy and cylindrical spacer for cord. Not marked by Georg Jensen, however verified by Georg Jensen, 1981 as design no. 225. With Swedish import marks. Made approx. 1920. Weight 4276 g. H. incl. ceiling mounting and canopy 58 cm. Diam. 60 cm.

Acquired by the current owner at Bruun Rasmussen auction 431, lot no. 2226, November 1981. Information regarding provenance was provided to the current owner by auctioneer Arne Bruun Rasmussen in connection with the auction in 1981.

Provenance: Swedish matchstick manufacturer, financier and industrialist Ivar Kreuger, Sweden. As a trained engineer, Kreuger (1880-1932) introduced Swedish Match AB to the international market in 1917 and soon had a monopoly on global matchstick production. Over the course of a decade, Kreuger became one of the wealthiest people in the world. His immense success as an entrepreneur helped earn him the nickname "The Match King". His acquaintances had a lot of confidence in him and often entrusted their family fortunes to him – fortunes which he managed to the best of his ability. Kreuger's serious passion for art was reflected in his impressive collection of silver, especially by Georg Jensen. Unprecedentedly, he commissioned a number of chandeliers for his home in Stockholm. We seldom see such a rare piece from Georg Jensen as only a limited number of chandeliers were made. This chandelier very much reflects Georg Jensen's own dreams and objectives when it came to his designs: to create, not imitate. The chandelier is like a work of art, inspired by nature. Its organic shape and Jensen's choice of ornamentation, berries and foliage make the chandelier both well-proportioned and elegant, yet highly imaginative and functional at the same time.

DKK 500,000-600,000 / € 67,000-80,500



617
HARALD NIELSEN

b. Baarse 1892, d. 1977

"Old Danish"/"Dobbeltriflet". Sterling silver cutlery. Georg Jensen after 1947. Designed 1947. Weight excluding pieces with steel 6432 g. (155)

Comprising:

- 12 fish knives
- 12 fish forks
- 2 bouillon spoons L. 14.3 cm.
- 12 dinner knives with long handle
- 11 dinner forks
- 12 luncheon knives with long handle L. 19.5 cm.
- 12 luncheon forks L. 17 cm.
- 12 dessert spoons L. 18.2 cm.
- 12 teaspoons L. 12.6 cm.
- 12 large teaspoons L. 15.4 cm.
- 12 coffee spoons L. 11 cm.
- 12 pastry forks

- 1 soup ladle L. 28 cm.
- 1 carving set L. 33.3 and 29.6 cm.
- 3 cold cut forks L. 16.5 cm.
- 2 iced tea spoons L. 18.2 cm.
- 2 butter knives
- 1 cheese knife
- 1 cheese plane
- 1 citrus knife
- 1 pie knife
- 1 steak fork
- 1 server with steel L. 22.3 cm.
- 3 serving spoons with four-sided bowl L. 20 cm.
- 2 sauce ladles L. 18.6 cm.
- 1 fish serving sset L. 21.5 cm.
- 1 salad set with steel L. 22.7 cm.

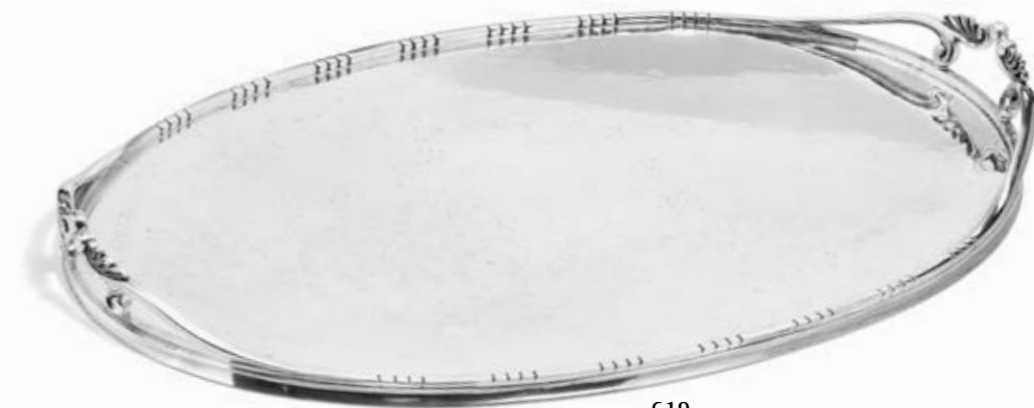
DKK 50,000 / € 6,700

618
GEORG JENSEN

"Acorn"/"Kongemønster". A champagne sabre with sterling silver handle. Georg Jensen after 1945, blade marked 41/100. L. 49 cm. DKK 8,000 / € 1,050



618



619

619
JOHAN ROHDE

b. Randers 1856, d. Hellerup 1935

A rare, oval shaped sterling silver serving tray with hammered surface and two openwork handles with stylized decor. Underside with profiled rim. Georg Jensen 1925-1932. Design no. 332 C. Weight 1784 g. H. incl. handles 4.5 cm. W. 27.2 cm. L. max. incl. handles 45 cm. DKK 30,000-40,000 / € 4,000-5,350



620

620
JOHAN ROHDE

b. Randers 1856, d. Hellerup 1935

"Acorn"/"Kongemønster". Sterling silver cutlery. Georg Jensen after 1945. Designed 1915. Weight excluding pieces with steel 3480 g. (114)

Comprising:

- 11 fish knives
- 12 fish forks
- 12 bouillon spoons L. 13.2 cm.
- 13 dinner knives with long handle L. 22.7 cm.
- 12 dinner forks L. 18.8 cm.
- 12 luncheon knives with long handle L. 22.5 cm.
- 12 luncheon forks L. 16.7 cm.
- 8 coffee spoons L. 11.2 cm.
- 12 pastry forks
- 1 fruit knife
- 1 child's fork L. 14.2 cm.

- 1 child's spoon L. 15.6 cm.
- 1 short bottle opener
- 1 server with steel L. 16.2 cm.
- 1 server L. 19.7 cm.
- 1 cheese plane
- 1 pie knife
- 1 sauce ladle
- 1 server L. 20 cm.

DKK 30,000-40,000 / € 4,000-5,350



621
HENNING KOPPEL

b. Copenhagen 1918, d. s.p. 1981

"Caravel". A large, rarely offered sterling silver cutlery set. Georg Jensen after 1957. Designed 1957. Weight excluding pieces with steel and ebonite 5868 g. (176)

Comprising:

18 dinner knives L. 21.7 cm.

18 dinner spoons L. 19.3 cm.

18 dinner forks L. 18.7 cm.

18 luncheon knives L. 19.3 cm.

18 luncheon forks L. 17 cm.

18 pastry forks L. 14.3 cm.

18 soup spoons L. 16 cm.

18 fruit knives L. 17 cm.

17 coffee spoons L. 10.5 cm.

6 butter knives L. 15.5 cm.

4 dessert spoons L. 17,4 cm.

1 server L. 26 cm.

1 salad set with black ebonite L. resp. 29 and 29.3 cm.

2 sauce ladles L. 18.5 cm.

1 steak fork L. 21 cm.

DKK 100,000 / € 13,500



622
HENNING KOPPEL

b. Copenhagen 1918, d. s.p. 1981

"Svanen"/"The Swan". Sculptural sterling silver pitcher. Georg Jensen after 1977. With dating code H11=2006. Design no. 1052. Designed 1956. Weight 2095 g. H. 42 cm.

Literature: Viggo Sten Møller: "Henning Koppel", ill. p. 19.

Literature: David A. Taylor & Jason W. Laskey: "Georg Jensen Holloware - The Silver Fund Collection", ill. p. 309.

DKK 100,000-150,000 / € 13,500-20,000



623

**623
SIGVARD BERNADOTTE**

b. 1907, d. 2002

A sterling silver cocktail set comprising a cocktail pitcher, a circular tray and eight cocktail goblets. Georg Jensen 1925-1932 (pitcher), 1933-1944 (two goblets), 1944-1951 (six goblets), and after 1945 (tray). Design no. 819 B. Total weight 1533 g. Pitcher: H. 17 cm. Tray: H. 1.2 cm. Diam. 26.2 cm. Goblets: H. 5.7 cm. Diam. 5 cm. (10) *DKK 50,000 / € 6,700*

**624
SIGVARD BERNADOTTE**

b. 1907, d. 2002

A pair of circular sterling silver dishes with cover. Cylindrical, carved ebony finials and oval, smooth handles. Outer surfaces with engraved, vertical relief decor. Georg Jensen 1945-1977. Design no. 900. Designed 1942. Total weight 1750 g. H. resp. 10.5 and 11 cm. Diam. 19.5 cm. L. max. resp. 32.5 and 33 cm. (2) *DKK 30,000 / € 4,000*



624



625

626

**625
KAY FISKER**

b. Frederiksberg 1893, d. København 1965

A sterling silver pitcher. Marked Kay Fisker. Made and marked by A. Michelsen, 1948. Designed 1927. Weight 555 g. H. 23.5 cm.

Literature: Lise Funder: "Dansk Sølv i det 20. århundrede", ill. p. 93.

*Literature: Malene Dybbøl & Sabrina Ulrich-Vinther: "Hofjuveler A. Michelsen - Fra Stilkopi til Arkitektsølv", ill. p. 105 *DKK 20,000-25,000 / € 2,700-3,350**

**626
KAY FISKER**

b. Frederiksberg 1893, d. København 1965

A sterling silver pitcher. Marked Kay Fisker. Made and marked by A. Michelsen, 1L. With date letter 19=1959. Designed 1927. Weight 668 g. H. 24.5 cm.

Literature: Lise Funder: "Dansk Sølv i det 20. århundrede", ill. p. 93.

*Literature: Malene Dybbøl & Sabrina Ulrich-Vinther: "Hofjuveler A. Michelsen - Fra Stilkopi til Arkitektsølv", ill. p. 105 *DKK 20,000 / € 2,700**



627

627
HARALD NIELSEN

b. Baarse 1892, d. 1977

"Old Danish"/"Dobbeltriflet". Sterling silver cutlery. Georg Jensen after 1947. Designed 1947. Weight excluding pieces with steel 5608. (121)

- Comprising:*
 12 fish knives
 12 fish forks
 12 dinner knives with short handle L. 22.5 cm.
 12 dinner forks L. 18 cm.
 12 dinner spoons L. 18.3 cm.
 12 luncheon knives with short handle L. 19.6 cm.
 12 luncheon forks L. 17 cm.
 12 large teaspoons/dessert spoons L. 15.4 cm.
 12 coffee spoons L. 11 cm.
 3 cold cut forks L. 16.5 cm.
 1 cheese knife
 1 vegetable fork L. 20 cm.
 2 serving spoons L. 20 cm.
 1 fish serving set L. 21.2 cm.
 2 sauce ladles L. 18.7 cm.
 1 large serving fork L. 25.7 cm.
 1 large serving spoon L. 25.7 cm.
 1 steak fork.

DKK 40,000 / € 5,350



628

628 ©
KAY BOJESSEN

b. Copenhagen 1886, d. Gentofte 1958

A sterling silver serving bowl and cover, accompanied by a matching serving ladle. Brazilian rosewood dish, finial and handle. Made and marked by Kay Bojesen, dish with paper label. Weight excluding dish 762 g. Total H. 16 cm. Dish: Diam. 20.4 cm. Ladle: L. 19.5 cm. (2)

CITES-certificate valid for transport and re-sale within the European Union included.

DKK 25,000–30,000 / € 3,350–4,000



629

629
HARALD NIELSEN

b. Baarse 1892, d. 1977

"Old Danish"/"Dobbeltriflet". Sterling silver cutlery. Georg Jensen after 1947. Designed 1947. Weight excluding pieces with steel 4620 g. (128)

- Comprising:*
 18 dinner knives with long handle L. 21.8 cm.
 12 dinner forks L. 18 cm.
 24 dinner spoons L. 18.3 cm.
 12 luncheon knives with long handle L. 19.5 cm.
 12 luncheon forks L. 17 cm.
 12 dessert spoons L. 17.2 cm.

- 14 pastry forks
 17 coffee spoons
 2 fruit knives L. 16.9 cm.
 1 pie knife
 1 salad set with steel L. 23 cm.
 1 sauce ladle L. 18.5 cm.
 1 serving spoon L. 20.2 cm.
 1 steak fork L. 19.7 cm.

DKK 40,000 / € 5,350



630

630
JOHAN ROHDE

b. Randers 1856, d. Hellerup 1935

A sterling silver teapot with hammered surface. Carved ebony handle. Georg Jensen 1945–1951. Design no. 787. Designed 1933. Weight 638 g. H. incl. handle 11.5 cm. L. 21.5 cm.

DKK 20,000 / € 2,700



631

**631
AXEL SALTO**

b. Copenhagen 1889, d. Frederiksberg 1961

A small stoneware vase modelled with fruit and branches. Decorated with Solfatara glaze. Signed Salto. Royal Copenhagen. Designed 1944. H. max. 6 cm. L. max. 8 cm.

Literature: "Axel Salto - Master of Stoneware", CLAY - Museum of Ceramic Art Danmark, ill. in model register fig. 191, p. 176. DKK 6,000-8,000 / € 805-1,050



632

**632
AXEL SALTO**

b. Copenhagen 1889, d. Frederiksberg 1961

A stoneware vase partly modelled in sprouting style. Decorated with Solfatara glaze. Signed Salto, 21439. Royal Copenhagen. Made 1960. Designed 1957. H. max. 12.5 cm.

Literature: "Axel Salto - Master of Stoneware", CLAY - Museum of Ceramic Art Danmark, ill. in model register fig. 295, p. 181. DKK 25,000-30,000 / € 3,350-4,000

**633
AXEL SALTO**

b. Copenhagen 1889, d. Frederiksberg 1961

A circular stoneware bowl. The outside modelled with stylized leaf-decor in horizontal bands. Decorated with Solfatara glaze. Signed Salto, 20699. Royal Copenhagen. Made 1967. Designed 1935. H. 14-14.4 cm. Diam. 34.7-35 cm.

Literature: "Axel Salto - Master of Stoneware", CLAY - Museum of Ceramic Art Danmark, ill. in model register fig. 204, p. 176. DKK 30,000 / € 4,000



633



634

**634
AXEL SALTO**

b. Copenhagen 1889, d. Frederiksberg 1961

A fruit-shaped stoneware vase modelled in sprouting style and with narrow mouth. Decorated with Sung glaze with a few blue elements. Signed Salto, 20818. Royal Copenhagen. Made 1980-1984. Designed 1946. H. 21 cm.

Literature: "Axel Salto - Master of Stoneware", CLAY - Museum of Ceramic Art Danmark, ill. in model register fig. 272, p. 180.

DKK 125,000-150,000 / € 17,000-20,000



635

635
AXEL SALTO

b. Copenhagen 1889, d. Frederiksberg 1961

A large, circular stoneware bowl. The outside modelled in fluted style. Decorated with Gundestrup glaze. Signed Salto. Made by Royal Copenhagen, unmarked. H. 12.2-12.6 cm. Diam. 28.5-28.8 cm.
Literature: "Axel Salto - Master of Stoneware", CLAY - Museum of Ceramic Art Danmark, ill. in model register fig. 180, p. 175. DKK 25,000 / € 3,350



636

636
AXEL SALTO

b. Copenhagen 1889, d. Frederiksberg 1961

A circular stoneware bowl. The outside modelled in fluted style. Decorated with Blue mussel glaze. Signed Salto, 20730. Royal Copenhagen. Made 1957. Designed 1936. H. 9 cm. Diam. 23 cm.
Literature: "Axel Salto - Master of Stoneware", CLAY - Museum of Ceramic Art Danmark, ill. in model register fig. 235, p. 178. DKK 20,000 / € 2,700



637

637
AXEL SALTO

b. Copenhagen 1889, d. Frederiksberg 1961

A cylindrical stoneware vase modelled in budded style. Decorated with Solfatara glaze. Signed Salto. Royal Copenhagen. Made 1944. Designed 1930. H. 21 cm. Diam. max. 9.5 cm.

Literature: "Axel Salto - Master of Stoneware", CLAY - Museum of Ceramic Art Danmark, ill. in model register fig. 175, p. 175. DKK 25,000-30,000 / € 3,350-4,000



638

638
AXEL SALTO

b. Copenhagen 1889, d. Frederiksberg 1961

A stoneware vase modelled in sprouting style. Decorated with Solfatara glaze. Signed Salto. Royal Copenhagen. Designed 1944. H. 12.4 cm.

Literature: "Axel Salto - Master of Stoneware", CLAY - Museum of Ceramic Art Danmark, ill. in model register fig. 184, p. 175. DKK 25,000-30,000 / € 3,350-4,000

639
AXEL SALTO

b. Copenhagen 1889, d. Frederiksberg 1961

A stoneware vase modelled in sprouting style and with a narrow mouth. Decorated with Sung glaze. Signed Salto, 20897. Royal Copenhagen. Made 1980-1984. Designed 1948. H. 15 cm.

Literature: "Axel Salto - Master of Stoneware", CLAY - Museum of Ceramic Art Danmark, ill. in model register fig. 280, p. 180. DKK 50,000-60,000 / € 6,700-8,050



639



640

640
AXEL SALTO

b. Copenhagen 1889, d. Frederiksberg 1961

A gourd-shaped stoneware lamp with horizontal, fluted relief decor. Decorated with Solfatara glaze. Signed Salto, 20653. Royal Copenhagen. Made 1969-1974. Designed 1944. H. excl. socket 37 cm. H. incl. socket 43.3 cm.

Literature: "Axel Salto - Master of Stoneware", CLAY - Museum of Ceramic Art Danmark, ill. in model register fig. 158, p. 174. DKK 20,000-30,000 / € 2,700-4,000

641
AXEL SALTO

b. Copenhagen 1889, d. Frederiksberg 1961

A stoneware bowl. The outside modelled in fluted style. Decorated with light and dark blue glaze with green and sand coloured elements. Signed Salto, 3524x. Royal Copenhagen. H. 11.4-12.1 cm. Diam. 25-27.1 cm. DKK 75,000 / € 10,000



641



642

642
AXEL SALTO

b. Copenhagen 1889, d. Frederiksberg 1961

A round stoneware vase modelled with narrow mouth and partly in budded style. Decorated with Sung glaze with blue elements. Signed Salto, 21441. Royal Copenhagen. Made 1957. Designed 1957. H. 20 cm. *Literature: "Axel Salto - Master of Stoneware", CLAY - Museum of Ceramic Art Danmark, ill. in model register fig. 297, p. 181. DKK 60,000 / € 8,050*



643

643
AXEL SALTO

b. Copenhagen 1889, d. Frederiksberg 1961

A stoneware vase modelled with narrow neck. The lower part modelled with vertical, fluted relief decor. Decorated with Solfatara glaze. Signed Salto, 20732. Made 1969-1974. Royal Copenhagen. Designed 1945. H. 23 cm. *Literature: "Axel Salto - Master of Stoneware", CLAY - Museum of Ceramic Art Danmark, ill. in model register fig. 237, p. 178. DKK 20,000-25,000 / € 2,700-3,350*



644

644

AXEL SALTO

b. Copenhagen 1889, d. Frederiksberg 1961

A gourd-shaped stoneware vase. Decorated with Clair de Lune glaze. Signed Salto, 20741. Royal Copenhagen. Designed 1945. H. 19.3 cm.

Literature: "Axel Salto - Master of Stoneware", CLAY - Museum of Ceramic Art Danmark, ill. in model register fig. 247, p. 178. DKK 20,000-25,000 / € 2,700-3,350

645

AXEL SALTO

b. Copenhagen 1889, d. Frederiksberg 1961

Two stoneware bowls and a small, cylindrical vase. A round bowl modelled on the outside with fruits, leaves and branches in relief. Decorated with Sung glaze. Signed Salto, 20677. Made 1975-1979. Designed 1944. H. 5.5 cm. Diam. 14.5-15. cm. A round bowl modelled on the outside with a lizard. Decorated with Sung glaze with blue elements. Signed Salto, 20286 (20682). Made 1975-1979. Designed 1944. H. 6 cm. W. max. 9.3 cm. A small cylindrical vase modelled on the outside in budded style. Decorated with Solfatarra glaze. Signed Salto, 20703. Made 1966. Designed 1944. H. 5 cm. Diam. 6.7 cm. Royal Copenhagen. (3)

Literature: "Axel Salto - Master of Stoneware", CLAY - Museum of Ceramic Art Danmark, ill. in model register resp. fig. 182, p. 175. Fig. 187, p. 175. And fig. 208, p. 177. DKK 20,000 / € 2,700



645

646^{ARR}

ALEV EBÜZZIYA SIESBYE

b. Istanbul 1938

A circular stoneware bowl, decorated with blue glaze. The upper rim partly with cobalt glazed, slanted line decor. Signed alev, F118. Made in the early 1990s. Unique. H. 8 cm. Diam. 14-14.3 cm.

Provenance: Private collection, Denmark. DKK 30,000 / € 4,000

647^{ARR}

ALEV EBÜZZIYA SIESBYE

b. Istanbul 1938

A circular stoneware bowl, exterior with incised line decor. Decorated with transparent green glaze, the exterior partly unglazed. Signed alev '71. Unique. H. 11.9-12.2 cm. Diam. 20 cm.

DKK 20,000-30,000 / € 2,700-4,000



646



647



648

648^{ARR}
ALEV EBÜZZIYA SIESBYE

b. Istanbul 1938

A very large, circular stoneware bowl, decorated with light blue glaze. The upper rim with dark blue glaze. Signed alev F130, paper label with hand written GR '96. Unique. H. 26.3-27.3 cm. Diam. 40-40.5 cm.

DKK 150,000-200,000 / € 20,000-27,000



649

649^{ARR}
ALEV EBÜZZIYA SIESBYE

b. Istanbul 1938

A circular stoneware bowl, decorated with brownish violet glaze. The upper rim with blue glaze. Signed alev 91, F16. Unique. H. 10.3-10.5 cm. Diam. 18 cm.

Provenance: Private collection, Denmark.

DKK 40,000 / € 5,350



650

650^{ARR}
ALEV EBÜZZIYA SIESBYE

b. Istanbul 1938

A circular stoneware bowl, decorated with azure glaze. The upper rim with turquoise glaze. Signed alev. Unique. H. 10.8-11 cm. Diam. 16.5-17 cm.

Provenance: Private collection, Denmark. Acquired approx. 1994. DKK 40,000-50,000 / € 5,350-6,700

651 ARR
BO KRISTIANSEN

b. Göteborg 1944, d. Copenhagen 1991

A sculptural, circular stoneware object with incised relief letters. Decorated with black, golden and polychrome glaze. Unsigned. Unique. H. 19.9-20.3 cm. Diam. 42.6-43.3 cm.
Provenance: Private collection, Denmark.

DKK 40,000-50,000 / € 5,350-6,700



651

652 ARR
BO KRISTIANSEN

b. Göteborg 1944, d. Copenhagen 1991

A large, circular stoneware vessel. Slightly convex shape, the outside with incised letters. Decorated with blue, green and yellow glaze. The inside with transparent blue glaze. Unsigned. Unique. H. 30.2-30.7 cm. Diam. 37.2-38.2 cm.

Provenance: Private collection, Denmark.

DKK 40,000 / € 5,350



652

653 ARR
BO KRISTIANSEN

b. Göteborg 1944, d. Copenhagen 1991

A large, circular stoneware bowl. The outside with incised relief letters. Decorated with blue, green, reddish brown and greyish brown glaze. The inside with plum-coloured glaze with some greyish green elements. Signed monogram. Unique. H. 19.2-19.5 cm. Diam. 31.5-33 cm.

DKK 30,000-40,000 / € 4,000-5,350



653

654^{ARR}

GERTRUD VASEGAARD

b. Rønne 1913, d. 2007

A circular stoneware bowl decorated with blue glazed, geometric decor and transparent glaze. Signed monogram for Gertrud Vasegaard and studio monogram. Unique. H. 17 cm. Diam. 19.3-19.6 cm. *DKK 20,000 / € 2,700*



654



657



655

655^{ARR}

GERTRUD VASEGAARD

b. Rønne 1913, d. 2007

A round stoneware vase modelled in convex shape. Decorated with transparent glaze and the outside with brown glazed geometric decor. Signed monogram, 1980. Unique. H. 9.8 cm. Diam. 13.7-14 cm. *DKK 15,000-18,000 / € 2,000-2,400*

656^{ARR}

BODIL MANZ

b. Frederiksberg 1943

A large, oval porcelain bowl. Tall walls decorated on the outside with black glazed, geometric decor. The upper rim also with black glaze. Signed Bodil Manz and monogram. Unique. H. 12.7 cm. W. 25.8 cm. L. 38 cm. *DKK 20,000-30,000 / € 2,700-4,000*

657^{ARR}

ALEV EBÜZZIYA SIESBYE

b. Istanbul 1938

A circular stoneware bowl, decorated with blue glaze. The upper rim with brown glaze. Signed alev, F120. Made approx. 1980. Unique. H. 11.6-12 cm. Diam. 22-22.3 cm.

Provenance: Private collection, Denmark.

DKK 50,000-60,000 / € 6,700-8,050

658^{ARR}

ALEV EBÜZZIYA SIESBYE

b. Istanbul 1938

A circular stoneware dish, decorated with yellow glaze. The upper rim as well as in- and outside's centre decorated with reddish brown glazed line decor. Signed alev '79, B21. Unique. H. 10-11 cm. Diam. 38-38.3 cm. *DKK 80,000-100,000 / € 10,500-13,500*

DKK 80,000-100,000 / € 10,500-13,500



656



658



659

659^{ARR}
ALEV EBÜZZIYA SIESBYE

b. Istanbul 1938

A circular stoneware bowl, decorated with light white-rose glaze. The upper rim with pale violet glaze. Signed alev '83. Unique. H. 10.9-11.2 cm. Diam. 19.5 cm.

DKK 20,000-25,000 / € 2,700-3,350



660

660^{ARR}
ALEV EBÜZZIYA SIESBYE

b. Istanbul 1938

A large, circular stoneware bowl decorated with light blue glaze. The upper rim decorated with dark blue glaze with some green elements. Signed alev, F109 2Y. Unique. H. 23.8-24 cm. Diam. 34 cm.

DKK 75,000-100,000 / € 10,000-13,500



661

661^{ARR}
ALESSANDRO PIANON

b. 1931, d. 1984

"Pulcino". An orange and clear glass bird figure with frosted black and white millefiori-technique eyes. Patinated metal legs. Made 1950s by Vistosi, Italy. H. 23 cm. Diam. 14 cm.

Provenance: Private collection, Denmark.

DKK 40,000 / € 5,350

662^{ARR}
ALEV EBÜZZIYA SIESBYE

b. Istanbul 1938

A very large, circular stoneware bowl, decorated with azure glaze. The upper rim with turquoise glaze. Signed alev '87. Unique. H. 14.2-15 cm. Diam. 44.4-46.2 cm.

DKK 75,000-100,000 / € 10,000-13,500



662



663

663^{ARR}
PER WEISS

b. Melby 1953, d. 2023

A stoneware floor vase with stylized decor. Decorated with transparent, greyish brown and light bluish green glaze. The inside with transparent glaze. Marked monogram. Unique. H. 79 cm. Diam. max. 39 cm.

Provenance: Private collection, Denmark. Acquired by the current owner directly from Per Weiss.

DKK 75,000 / € 10,000



664

664^{ARR}
PER WEISS

b. Melby 1953, d. 2023

A round stoneware floor vase, exterior with stylized relief decor. Decorated with transparent and greyish brown glaze with blue, brown and a few green elements. The inside with dark blue glaze. Marked monogram. Unique. H. excl. plinth 67 cm. H. incl. plinth 69 cm. Diam. 44 cm.

Provenance: Private collection, Denmark. Acquired by the current owner directly from Per Weiss.

An originally matching loose, black painted MDF plinth is included. DKK 50,000 / € 6,700



665

665^{ARR}
ARJE GRIEGST

b. København 1938, d. 2016

"Havterrin"/(Ocean Tureen). A large stoneware tureen and cover. Modelled with faces and stylized relief decor. Decorated with Celadon glaze. Unsigned. Made approx. 1976 by Royal Copenhagen, unmarked. H. 32 cm. W. max. 37 cm.

Provenance: Private collection, Denmark.

Literature: Kerstin Wickman: "Arje Griegst - Goldsmith, Designer and Sculptor", Forlaget Vandkunsten, ill. pp. 248-249.

Literature: Leif Lautrup-Larsen: "Stentøj - Den Kongelige Porcelainsfabrik", Nyt Nordisk Forlag Arnold Busck, ill. p. 292.

DKK 100,000 / € 13,500





666

666
HENRI BERGÉ
FRENCH SILVERSMITH

b. Diarville 1870, d. Nancy 1937

A rare clear, rose and white glass vase. Overlaid with green and rose glass with red elements. Carved with motif of roses and leaves. Signed Daum Nancy with the Cross of Lorraine. Mounted with a silver base and rim liner case with oak leaves, acorns and snails. Faint French hallmarks. H. 23 cm. DKK 20,000 / € 2,700



667

667
A. G. ARGY-ROUSSEAU

A small pâte de verre vase of clear, amber-coloured and dark brown glass surrounded by moulded motifs of parrots. Oval shaped base. Signed G. Argy-Rousseau. Made approx. 1920. H. 12 cm. W. 12.3 cm. D. max. 8.3 cm. DKK 10,000 / € 1,350

668
LOUIS MAJORELLE

b. Toul 1859, d. Nancy 1926

A large, circular red, marbled glass jardiniere. Fitted with a relief-decorated cast iron mounting. Signed Majorelle, Daum Nancy with the Cross of Lorraine. H. 14.5 cm. Diam. 35 cm.

DKK 12,000–15,000 / € 1,600–2,000



668

669
AUGUSTE DELAHERCHE

b. Armentières 1857, d. Paris 1940

A tall, narrow stoneware vase modelled with relief decor to the upper part. Decorated with transparent greyish brown flambé glaze with red elements. The upper part with blue, violet and greyish glaze. Marked Auguste Delaherche, 3591. H. 25.5 cm.

DKK 25,000–30,000 / € 3,350–4,000

670
AUGUSTE DELAHERCHE

b. Armentières 1857, d. Paris 1940

A round stoneware vase modelled with narrow mouth and two "handles". Decorated with ochre, bluish violet and greyish brown flambé glaze with a few rose elements. Marked Auguste Delaherche, 6665, signed 575. H. 21.5 cm.

DKK 20,000–25,000 / € 2,700–3,350



670



669

671
EMILE GALLÉ

b. Nancy 1846, d. s.p. 1904

A round, frosted clear- and amber-coloured Cameo glass vase. Overlaid with brownish purple glass carved with relief decor in the shape of plum branches. Signed Gallé. H. 20.5 cm. Diam. max. 13 cm.

DKK 12,000–15,000 / € 1,600–2,000



671

672
DAUM NANCY

A round, pale yellow and clear Art Nouveau Cameo glass vase. Overlaid with glass in shades of brown, green and white. Carved with winter forest motif, partly decorated with enamel in shades of mainly brown and white. Signed Daum Nancy, with the Cross of Lorraine. Made approx. 1910. H. 19.5 cm. Diam. 15 cm.

DKK 20,000 / € 2,700



672

673
DAUM NANCY

A round clear glass vase with opalescent blue, purple and yellow glass powders. Enamelled in greyish green and bright blue speckles. Etched and carved with relief peacock feathers in bluish green, black and inky blue. Etched signature Daum Nancy with the Cross of Lorraine. H. 18 cm. Diam. 12.5 cm.

DKK 15,000 / € 2,000



673



674



675

674
EMILE GALLÉ

b. Nancy 1846, d. s.p. 1904

An early "Cristallerie" vase of pale green glass with sculptural, three-sided top. The exterior with both cast and engraved *Dicentra spectabilis*-motif with polychrome enamel decor. Signed Gallé. Made approx. 1900. H. 35 cm.

DKK 12,000–15,000 / € 1,600–2,000

675
EMILE GALLÉ

b. Nancy 1846, d. s.p. 1904

An early "Cristallerie" vase of moss green glass. The inner and outer surface with embossed decor to the glass surface. The exterior with polychrome enamel decor in the shape of *Cypripedium* orchids, mushrooms and leaves. The underside with embossed motif of a mushroom and signature Gallé, faint serial number. Made approx. 1900. H. 31.3 cm.

DKK 12,000–15,000 / € 1,600–2,000



676

676 ^{ARR}
HENRI BERGÉ

b. Diarville 1870, d. Nancy 1937

AMALRIC WALTER

b. Sèvres 1870, d. Lury-sur-Arnon 1959

A pâte de verre clear glass paperweight with moulded motif of a lobster, leaves and flowers in red, orange, green and black glass. Cast signature A. Walter, Nancy. Made approx. 1920. H. max. 4.5 cm. W. max. 12 cm. L. max. 16.5 cm. *DKK 15,000/€ 2,000*



677

677 ^{ARR}
HENRI BERGÉ

b. Diarville 1870, d. Nancy 1937

AMALRIC WALTER

b. Sèvres 1870, d. Lury-sur-Arnon 1959

A pâte de verre bowl of amber-coloured, black and dark green glass with moulded salamander. Cast signature A. Walter, Nancy. Made approx. 1920. H. max. 8.1 cm. W. 10.6 cm. L. max. 13.5 cm.

DKK 12,000–15,000/€ 1,600–2,000



678

678 ^{ARR}
HENRI BERGÉ

b. Diarville 1870, d. Nancy 1937

AMALRIC WALTER

b. Sèvres 1870, d. Lury-sur-Arnon 1959

A pâte de verre amber-coloured and clear glass box with a covered compartment and two curved storage spaces. The outside with moulded foliage decor. Lid with moulded decor of a black and brown glass scarab. Cast signature A. Walter, Nancy. Made approx. 1920. H. incl. scarab 7.5 cm. W. 8 cm. L. 18.8 cm.

DKK 12,000–15,000/€ 1,600–2,000



679

679 ^{ARR}
HENRI BERGÉ

b. Diarville 1870, d. Nancy 1937

AMALRIC WALTER

b. Sèvres 1870, d. Lury-sur-Arnon 1959

A pâte de verre paperweight of amber-coloured, blue and brown glass. Moulded moth motif. Cast signature A. Walter, Nancy. Made approx. 1920. H. max. 4.3 cm. W. max. 11 cm. D. 8.5 cm.

DKK 12,000–15,000/€ 1,600–2,000



680

680
AUGUSTE DELAHERCHE

b. Armentières 1857, d. Paris 1940

A stoneware vase, upper part modelled with relief decor. Decorated with reddish brown, brownish violet and dark brown flambé glaze. Marked Auguste Delaherche, 6956. H. 17.7 cm. *DKK 10,000–12,000/€ 1,350–1,600*



681

681
AUGUSTE DELAHERCHE

b. Armentières 1857, d. Paris 1940

A stoneware vase with narrow neck. Decorated with ochre brown and brownish black flambé glaze with turquoise elements. Incised signature Aug. Delaherche. H. 22.3 cm.

DKK 15,000–20,000/€ 2,000–2,700

FURNITURE, LAMPS
AND CARPETS

Thursday 7 December

Lot 684 - 854

682

EVA STÆHR-NIELSEN

b. Frederiksberg 1911, d. 1976

A stoneware floor vase modelled in slightly four-sided shape and with profiled "web"-decor in eight fields. Decorated with turquoise blue and transparent greenish glaze with a few dark elements. Signed E.ST.N. Made and marked by Saxbo, Denmark. Made 1950-1968. H. 42 cm. DKK 15,000 / € 2,000



682

683^{ARR}

J AIS NIELSEN

b. Copenhagen 1885, d. Hellerup 1961

"The Warrior Vase". A lidded stoneware vase modelled with relief figures and glazed motifs in shades of blue, brown and grey. Signed Jais, 25-10-1922. Royal Copenhagen. Unique. H. incl. lid 68 cm. Diam. max. 40 cm. Literature: "Jais Nielsen Keramik", Arthur Jensens Forlag 1938, ill. p. 49. DKK 25,000-30,000 / € 3,350-4,000



683





684

684
HANS J. WEGNER

b. Tønder 1914, d. Gentofte 2007

“JH 719”. Easy chair with beech frame. Seat and back with flag halyard, fitted with brass cylinders. Loose cushions in seat and neck upholstered with blue wool. Designed 1968. This example made approx. 1980 by cabinetmaker Johannes Hansen.

Provenance: Acquired by present owner approx. 1980.
DKK 25,000–30,000 / € 3,350–4,000



685

685
HANS J. WEGNER

b. Tønder 1914, d. Gentofte 2007

“Peacock Chair”. Easy chair with ash frame and teak armrests. Seat with woven paper cord. Model JH 550. Designed 1947. This example made approx. 1950–1960s by cabinetmaker Johannes Hansen, stamped. Model presented at The Copenhagen Cabinetmakers' Guild Exhibition at Designmuseum Danmark, 1947.

Literature: Grete Jalk [ed.]: "40 Years of Danish Furniture Design", vol. 3, pp. 14–17. DKK 25,000 / € 3,350



686

686
HANS J. WEGNER

b. Tønder 1914, d. Gentofte 2007

“Valet Chair”. Sculptural, solid pine chair, back with wenge inlays. Seat with storage space underneath. Model PP 250. Designed 1953. This example made approx. 1990s by PP Møbler.

Provenance: Cabinetmaker formerly employed at PP Møbler. Hence by decent in the family.

Model presented at the Cabinetmaker's Guild Exhibition at Designmuseum Danmark, 1953.

Literature: Grete Jalk [ed.]: "40 Years of Danish Furniture Design", vol. 3, pp. 244–247.

DKK 30,000–40,000 / € 4,000–5,350

687
HANS J. WEGNER

b. Tønder 1914, d. Gentofte 2007

“China Chair”. A set of six mahogany armchairs. Loose seat cushion upholstered with natural leather, fitted with buttons. Model 4283. Designed 1944. These examples manufactured 2004–2005 by Fritz Hansen, with maker's label. (6)

Literature: Noritsugu Oda, "Danish Chairs", 1999. p. 104–105. DKK 60,000 / € 8,050



687



688

688
SVEA NORÉN

Sweden, 20th century.

Handwoven wool carpet in "rölakan" flatweave technique. Terracotta-coloured base with light grid pattern and geometrical patterns in shades of yellow, blue and brown. Signed SN. This example made second half of 20th century, Sweden. L. 366 cm. W. 233 cm.

DKK 40,000 / € 5,350

689 * ©

HANS J. WEGNER

b. Tønder 1914, d. Gentofte 2007

"China Chair". A Brazilian armchair. Loose seat cushion upholstered with patinated red leather, fitted with buttons. Model 4283. Designed 1944. This example manufactured 1969 by Fritz Hansen, with maker's label.

Literature: Noritsugu Oda, "Danish Chairs", 1999, p. 104-105. DKK 60,000 / € 8,050



689

690 ©

HANS J. WEGNER

b. Tønder 1914, d. Gentofte 2007

"AT 325". Desk with chromed steel frame with rosewood "shoes". Brazilian rosewood top, front with two drawers. Designed approx. 1961. This example manufactured approx. 1960s by Andr. Tuck, stamped. H. 70.5 cm. L. 200 cm. W. 90 cm.

Literature: "Mobilia", no. 70, May 1961, pp. 86-87. DKK 75,000-100,000 / € 10,000-13,500



690



691

691
HANS J. WEGNER

b. Tønder 1914, d. Gentofte 2007

“The Chair”. A set of six solid teak armchairs. Seat with woven cane. Model JH 501. Designed 1949. These examples made 1950–1960s by cabinetmaker Johannes Hansen, stamped. (6)

Model presented at The Copenhagen Cabinetmakers' Guild Exhibition at Designmuseum Danmark, 1949.

Literature: Grete Jalk [ed.]: “40 Years of Danish Furniture Design”, Vol. 3, p. 98–101 and p. 140–142. DKK 125,000–150,000 / € 17,000–20,000

692 ©
HANS J. WEGNER

b. Tønder 1914, d. Gentofte 2007

“AP 29”. A pair of Brazilian rosewood stools. Seats upholstered with sand coloured fabric with natural leather edgings. Designed 1954. These examples manufactured 1955–1960s by AP-Stolen. (2)

Model presented at the Manufacturer Association's Furniture Fair in Fredericia 13–16 May 1954.

Litteratur: "Møbler" No. 6–1954, p. 27.

DKK 50,000 / € 6,700



692

693 ©
HANS J. WEGNER

b. Tønder 1914, d. Gentofte 2007

“Papa Bear”. A wingback easy chair with Brazilian rosewood “nails” and stained beech legs. Sides, seat cushion and back upholstered with light green wool, back fitted with buttons. Model AP 19. Designed 1951. This example manufactured approx. 1960s by AP Stolen.

Model presented at the exhibition "Tidens Møbler" in Forum 1952. *DKK 80,000–100,000 / € 10,500–13,500*



693

694
BØRGE MOGENSEN

b. Aalborg 1914, d. Gentofte 1972

"The Hunting Chair". Low lounge chair with solid ash frame. Seat and back with patinated natural grain leather from Dominion Belting Company. Model 2229. Designed 1950. This example made approx. 1969 by cabinetmaker Erhard Rasmussen. *Provenance: Acquired 1969 by present owner's father. Hence by descent in the family.*

Literature: Grete Jalk [ed.]: "40 Years of Danish Furniture Design", vol. 3, p. 154-157.

Literature: Arne Carlsen: "Møbler tegnet af Børge Mogensen", ill. p. 42-43.

Literature: Noritsugu Oda: "Danish Chairs", ill. p. 128-129. **DKK 30,000 / € 4,000**



694

695
BØRGE MOGENSEN

b. Aalborg 1914, d. Gentofte 1972

Oak daybed. Loose mattress upholstered with sand coloured canvas, fitted with natural leather buttons. Model 4312. This example manufactured 1960-1970s by Fredericia Stolefabrik. H. 34 cm. L. 197 cm. W. 100 cm. **DKK 30,000 / € 4,000**



695



696



697



696
BØRGE MOGENSEN

b. Aalborg 1914, d. Gentofte 1972

Table / bench with patinated solid oak frame. Top with woven cane. Model 5272. This example manufactured approx. 1970s by Fredericia Stolefabrik. H. 35 cm. L. 138 cm. W. 46 cm.

Provenance: Gunnar Bratvold, publisher of "Mobilia" - a furniture, decorative arts and interior design magazine.

DKK 15,000-20,000 / € 2,000-2,700

697
BØRGE MOGENSEN

b. Aalborg 1914, d. Gentofte 1972

"The Spanish Chair". A pair of patinated oak armchairs. Seat and back with patinated natural grain leather. Model 2226. Designed 1958. These examples manufactured approx. 1970s by Fredericia Stolefabrik. (2) *Model presented at The Copenhagen Cabinetmakers' Guild Exhibition at Designmuseum Danmark, 1958.*

Literature: Grete Jalk [ed.]: "40 Years of Danish Furniture Design", vol. 4, pp. 66-69.

Literature: Arne Carlsen, "Møbler tegnet af Børge Mogensen", ill. pp. 84-85. **DKK 50,000 / € 6,700**



698

698
BØRGE MOGENSEN

b. Aalborg 1914, d. Gentofte 1972

“The Hunting Chair”. A pair of low, solid oak lounge chairs. Seat and back with patinated natural grain leather. Model 2229. Designed 1950. These examples manufactured approx. late 1990s by Fredericia Furniture. (2)

Literature: Grete Jalk [ed.]: “40 Years of Danish Furniture Design”, vol. 3, p. 154–157.

Literature: Arne Carlsen: “Møbler tegnet af Børge Mogensen”, ill. p. 42–43.

DKK 50,000–60,000 / € 6,700–8,050



699
BØRGE MOGENSEN

b. Aalborg 1914, d. Gentofte 1972

Table / bench with patinated solid oak frame. Top with woven cane. Model 5272. This example manufactured approx. 1970s by Fredericia Stolefabrik. H. 35 cm. L. 137.5 cm. W. 69 cm.

DKK 20,000–25,000 / € 2,700–3,350



699



700

700
TH. VALENTINER

A pair of adjustable brass table lamps. Conical beige fabric shades. Model THV 375. These examples manufactured 1960s for retailer Poul Dinesen. H. max. 60 cm. L. arm 61 cm. (2)

Literature: Poul Dinesen catalogue approx. 1960. DKK 20,000 / € 2,700

701
BØRGE MOGENSEN

b. Aalborg 1914, d. Gentofte 1972

“Øresund”. A pair of oak chests of drawers on runner legs with black metal stretchers. Front with each eight drawers with round, carved handles. Designed 1959. These examples manufactured 1960–1970s by Karl Andersson & Söner, Sweden, marked. H. 84 cm. W. 135 cm. D. 46 cm. (2)

DKK 20,000 / € 2,700



701

702
ALF SVENSSON

b. Sverige 1923, d. s.p. 1992

"Norrländ". A pair of oak cabinets. Front with two doors covered with pleated rattan. Interior with adjustable shelves. These examples made approx. 1960s by Bjästa Möbelsnickeri, Sweden, stamped. H. 72 cm. L. 120 cm. D. 45 cm. (2)

DKK 25,000 / € 3,350



703
JØRGEN DITZEL

b. Frederiksberg 1921, d. København 1961

NANNA DITZEL

b. Copenhagen 1923, d. s.p. 2005

"Basket Chair". A teak easy chair, hand braided wicker seat and back. Designed 1950. This example made 1950-1960s by cabinetmaker Ludvig Pontoppidan, with maker's label.

Model presented at The Copenhagen Cabinetmakers' Guild Exhibition at Designmuseum Danmark, 1950.

Literature: Grete Jalk [ed.]: "40 Years of Danish Furniture Design", vol. 3, p. 152.

DKK 15,000-20,000 / € 2,000-2,700



704
POUL HENNINGSEN

b. Ordrup 1894, d. Hillerød 1967

"Langlyslampe/Elongated lamp". A pair of chromed metal and bakelite sconces with yellow frosted/opaline glass shades. These examples manufactured 1930s by Louis Poulsen. H. 37 cm. (2)

Literature: "Light Years Ahead", ill. and described p. 245. DKK 30,000-40,000 / € 4,000-5,350



705
NANNA DITZEL

b. Copenhagen 1923, d. s.p. 2005

Oregon pine daybed with two original underlying storage boxes. Loose mattress upholstered with patterned orange fabric, fitted with buttons, black leather edgings. This example manufactured 1960s by Kolds Savværk. H. 67.5 cm. L. 190 cm. D. 84 cm.

DKK 30,000 / € 4,000





706

706
JONATHAN NESCI

b. Chicago 1981

"Ratio". Sculptural polished aluminum side table with rubber base. Made as example nr. 2, 2013 in a limited edition. Marked HALE 7 Nesci. H. 41 cm. W. 65.5 cm. D. 40.5 cm.

DKK 20,000–25,000 / € 2,700–3,350

707
TY BEST

"Bridger". Darkened bronze console table with sculptural frame. Dark marble top with raised edges. Manufactured by Caste Design. H. 86 cm. L. 170 cm. W. 47 cm.

DKK 25,000–30,000 / € 3,350–4,000



707



708

708
UNKNOWN DESIGNER

Large wall lamp with partly white lacquered adjustable brass frame. White lacquered metal shade. This example manufactured approx. 1950–1960s, France or Italy. Max. L. 170 cm. Shade: diam. 34 cm.

DKK 20,000–25,000 / € 2,700–3,350

709
LUCA NICHETTO

b. Venedig 1976

"Harold". Freestanding solid oak desk. White lacquered top with storage space and one oak drawer. This example manufactured 19XXs for De La Spada. H. 81 cm. L. 142 cm. D. 63 cm.

DKK 25,000–30,000 / € 3,350–4,000



709



710

**710
ALVAR AALTO**

b. Kuortane 1898, d. Helsinki 1976

Floor lamp with brass shade, inside white lacquered. Leather covered stem and base. Model A808. Designed 1955 for the National Pensions Institute in Helsinki. This example manufactured 1950s by Valaistustyö Ky, Finland, stamped. H. 167 cm. *DKK 40,000 / € 5,350*

**711
POUL KJÆRHOLM**

b. Østervrå 1929, d. Hillerød 1980

“PK 91”. Folding stool with matte chromed steel frame. Seat with black leather. Designed 1961. This example manufactured approx. early 1980s by Fritz Hansen, not stamped. *DKK 30,000 / € 4,000*



711



712

**712
ITALIAN DESIGN**

Wall lamp with three shades. Partly black lacquered brass frame. Black, white and yellow lacquered shades. This example manufactured approx. 1960s, Italy. H. approx. 46 cm. W. approx. 50 cm.

DKK 12,000–15,000 / € 1,600–2,000

**713
POUL KJÆRHOLM**

b. Østervrå 1929, d. Hillerød 1980

“Student Table”. Freestanding desk with black lacquered iron frame. Three-layer Oregon pine plywood top. “Floating” black lacquered drawer. This example made 1950s by Rud. Rasmussen Cabinetmakers. H. 68 cm. L. 140 cm. W. 85 cm.

*Model designed for the Academy of Fine Arts in Copenhagen. *DKK 25,000 / € 3,350**



713

714
HANS BERGSTRÖM

b. Karlshamn 1910, d. Åhus 1996

Grey lacquered floor lamp with adjustable shade. This example manufactured approx. 1940s by Ateljé Lyktan, Sweden. H. 135 cm. *DKK 15,000 / € 2,000*

715
UNKNOWN DESIGNER

"Boomerang". Plywood easy chair. Seat and back with blue flag halyard. Metal legs with rubber "shoes". Probably prototype. Made approx. 1970-1980s.

DKK 15,000-20,000 / € 2,000-2,700



714

715

716^{ARR}
MOGENS LASSEN

b. Copenhagen 1901, d. Holte 1987

A unique, early prototype blue lacquered metal stool with pierced seat mounted on three oblique legs. Made and designed 1951.

Provenance: Acquired at Bruun Rasmussen in 2014, auction 850 lot no. 1068.

Provenance: Architect Mogens Lassen.

This metal stool designed in 1951 by Mogens Lassen can be seen as an "industrial" functionalist comment to his own wooden stool from 1942. The metal stool never went into production, this one is most likely the only one made.

Literature: Lisbet Balslev Jørgensen: "Arkitekten Mogens Lassen", ill. p. 74.

DKK 15,000-20,000 / € 2,000-2,700



716

717
JACOB KIELLAND-BRANDT

Small patinated ash chair. Designed 1960. This example made 1960s by cabinetmaker I. Christiansen, stamped.

Provenance: Gunnar Bratvold, publisher of "Mobilia" - a furniture, decorative arts and interior design magazine.

DKK 15,000-20,000 / € 2,000-2,700



717



718

718
IB KOFOD-LARSEN

b. 1921, d. 2003

Rare, freestanding two seater sofa with solid teak armrests and round, tapering legs. Sides, seat and back upholstered with original red and grey wool. Model 423. Designed 1954. This example made approx. 1956 by cabinetmakers Christensen & Larsen. L. 126 cm.

Model presented at The Copenhagen Cabinetmakers' Guild Exhibition at Designmuseum Danmark, 1954.

Literature: Grete Jalk [ed.]: "40 Years of Danish Furniture Design", vol. 3, ill. and referred to pp. 276-277.

DKK 60,000-80,000 / € 8,050-10,500



719

719
IB KOFOD-LARSEN

b. 1921, d. 2003

A pair of rare easy chairs with solid teak armrests and round, tapering legs. Sides, seat and back upholstered with original red and grey wool. Model 423. Designed 1954. These examples made 1956 by cabinetmakers Christensen & Larsen. (2)

Provenance: Acquired 1956 at Den Permanente by present owner's family. Hence by descent. Copy of the original invoice included.

Model presented at The Copenhagen Cabinetmakers' Guild Exhibition at Designmuseum Danmark, 1954.

Literature: Grete Jalk [ed.]: "40 Years of Danish Furniture Design", vol. 3, ill. and referred to pp. 276-277.

DKK 80,000-100,000 / € 10,500-13,500



720

720
IB KOFOD-LARSEN, ATTRIBUTED

b. 1921, d. 2003

Set of six patinated oak chairs. Seat and sculptural back upholstered with patinated brown Niger leather. These examples made approx. 1940-1950s, presumably by Christensen & Larsen cabinetmakers. (6)

DKK 25,000 / € 3,350

721
FINN JUHL

b. Frederiksberg 1912, d. Ordrup 1989

Freestanding three seater sofa with curved oak frame. Sides, seat and back upholstered with beige Savak wool. Designed 1952. This example manufactured approx. 1950s by cabinetmaker Søren Willadsen. L. 182 cm.

Model designed for the exhibition in Forum, March 1952.

Literature: "Bygge og Bo", Spring 1952.

DKK 20,000-25,000 / € 2,700-3,350



721



722

722
ARNE VODDER

b. 1926, d. 2009

Three sided teak coffee table with underlying shelf, mounted on six legs. Top with partly raised edge. This example made approx. 1950-1960s by P. Olsen Sibast. H. 51 cm. L. 134 cm. W. 84 cm.

DKK 20,000 / € 2,700

723

FINN JUHL

b. Frederiksberg 1912, d. Ordrup 1989

"FJ 53". A teak easy chair with "floating" armrests on brass fittings. Sides, seat and back upholstered with grey wool. Designed 1953. This example made 1950s by cabinetmaker Niels Vodder, stamped. Provenance: Gunnar Bratvold, publisher of "Mobilia" - a furniture, decorative arts and interior design magazine.

Model presented at The Copenhagen Cabinetmakers' Guild Exhibition at Designmuseum Danmark, 1953.

Literature: Grete Jalk [ed.]: "40 Years of Danish Furniture Design", vol. 3, pp. 270-271. DKK 40,000-50,000 / € 5,350-6,700



723



724

724

FINN JUHL

b. Frederiksberg 1912, d. Ordrup 1989

"FJ 53". Freestanding two seater teak sofa with "floating" armrests on brass fittings. Sides, seat and back upholstered with grey wool. Designed 1953. This example made approx. 1950s by cabinetmaker Niels Vodder, stamped by maker. L. 130 cm. Provenance: Gunnar Bratvold, publisher of "Mobilia" - a furniture, decorative arts and interior design magazine.

Model presented at The Copenhagen Cabinetmakers' Guild Exhibition at Designmuseum Danmark, 1953.

Literature: Grete Jalk [ed.]: "40 Years of Danish Furniture Design", vol. 3, ill. pp. 270-271. DKK 90,000-100,000 / € 12,000-13,500

725

FINN JUHL

b. Frederiksberg 1912, d. Ordrup 1989

"FJ 53". Teak easy chair with "floating" armrests on brass fittings. Unupholstered. Designed 1953. This example made approx. 1950-1960s by cabinetmaker Niels Vodder, not stamped.

Model presented at The Copenhagen Cabinetmakers' Guild Exhibition at Designmuseum Danmark, 1953.

Literature: Grete Jalk [ed.]: "40 Years of Danish Furniture Design", vol. 3, ill. pp. 270-271. DKK 60,000 / € 8,050



725



726

726

FINN JUHL

b. Frederiksberg 1912, d. Ordrup 1989

"FJ 53". Freestanding two seater teak sofa with "floating" armrests on brass fittings. Unupholstered. Designed 1953. This example made approx. 1950-1960s by cabinetmaker Niels Vodder, not stamped. L. 128 cm.

Model presented at The Copenhagen Cabinetmakers' Guild Exhibition at Designmuseum Danmark, 1953.

Literature: Grete Jalk [ed.]: "40 Years of Danish Furniture Design", vol. 3, ill. pp. 270-271. DKK 80,000 / € 10,500



727



728

727^{ARR}

FINN JUHL

b. Frederiksberg 1912, d. Ordrup 1989

“Barbe Bleue”. Unique oak dining / work table. Black formica top with profiled light maple rim. Light blue painted rail with four white painted drawers. Designed and made 1936 by Fritz Hansen. H. 73 cm. L. 170 cm. W. 85 cm.

Barbe Bleue is the name of the horrific tale of a French nobleman who killed his wives one after the other. It is also the name Finn Juhl gave to his entry for a design competition in 1936, arranged by the Danish furniture maker Fritz Hansen. The results of the competition were announced in January 1937 and published in the periodical “Nyt Tidsskrift for Kunstindustri” later that year. His entry was this unusual table, which also appears to be the very first referenced piece of Finn Juhl furniture that is both known to have been made and which still exists.

Finn Juhl's first pieces of furniture were generally thought to have been the ones presented by cabinet-maker Niels Vodder at the 1937 Copenhagen Cabinetmakers' Guild Exhibition, and for many people, the early years of Finn Juhl are pretty much synonymous with Niels Vodder pieces. The fact that Fritz Hansen collaborated with Juhl before Niels Vodder testifies to their importance in the history of Danish Design. This combined dining table and desk was among the winning competition entries of the 1936 Fritz Hansen design competition, taking 4th place. According to the sketch, the table was made with a top in black Bakelite, edge in profiled maple, frame of oak, and four drawers for cutlery and napkins painted white on the front and underside. The table was likely a one-off and, as such, was used as a dining table for many years by Finn Juhl himself. First in his first apartment with Fritz Hansen stick back chairs, and then from 1942 in his house in Ordrup with Palle Suenson chairs, until he later replaced it with his “Judas Table” and “Egyptian chairs”. The “Nyt Tidsskrift for Kunstindustri” periodical used it for some years in its ad for new subscribers, with the phrase: “If you want an expert's judgement... of new designs, etc.”.

This table was acquired decades ago by the current owners, who were completely unaware that it was a Finn Juhl table until recently. It is not known how it ended up with the previous owners. However, it seems likely that when Juhl divorced his first wife, Inge-Marie Skaarup, it was passed to her, along with several other early pieces of Finn Juhl furniture, where it probably disappeared into oblivion at a time when Finn Juhl and his work were all but forgotten.

The original sketch mentions only white drawers but no blue paint on the rail. However, the name “Barbe Bleue”, given by Finn Juhl himself to this table clearly point to the blue “beard” on the table, and inside of drawers. The paintwork does not appear to have been professionally painted, but it is also very, very old. It seems likely that it was actually painted by the young Finn Juhl himself.

DKK 200,000–400,000 / € 27,000–53,500

728

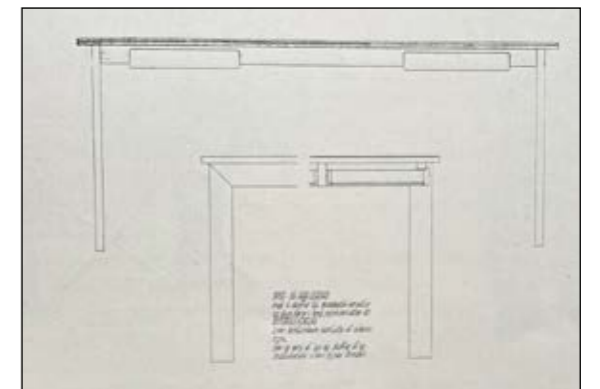
PALLE SUENSON

b. 1904, d. 1986

Set of four beech windsor chairs with teak seat. Designed 1940s for restaurant Coq d'Or. Made 1940-1950s by Fritz Hansen. (4) DKK 20,000 / € 2,700



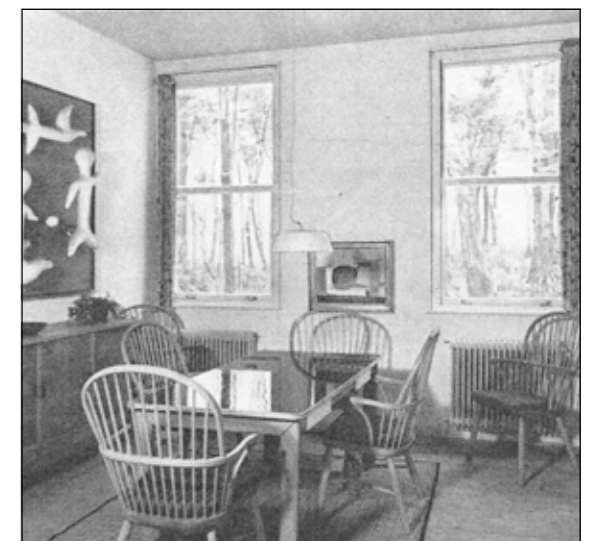
Announcement results FH competition, 1937



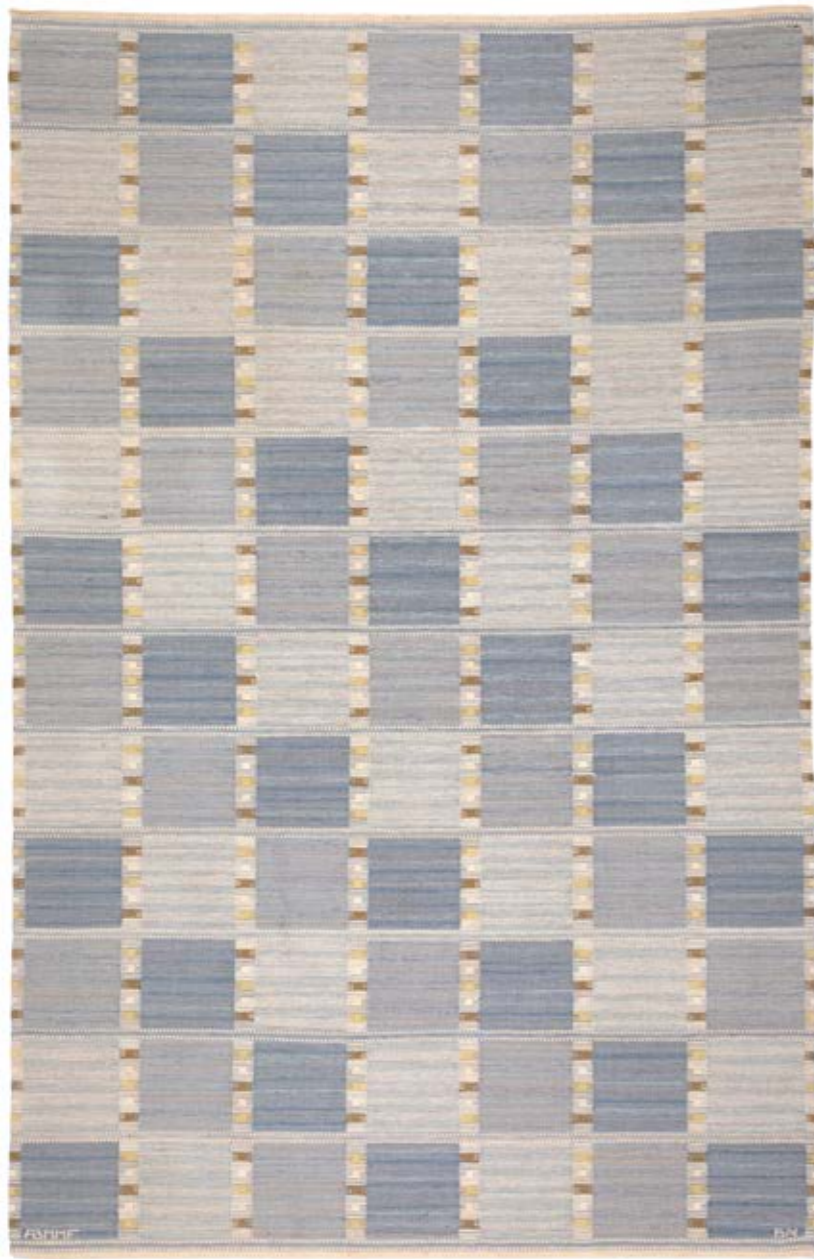
Sketch drawing by Finn Juhl for FH competition, 1936



Finn Juhl apartment, 1938



Finn Juhl house, Ordrup, 1942



729

**729
BARBRO NILSSON**

b. Malmö 1899, d. Höganäs 1983

“Falurutan”. Handwoven wool carpet in “rölakan” flatweave technique. Geometric pattern in shades of light blue. Signed BN and AB MMF. Designed 1952. This example made second half of 20th century by AB Märta Måås-Fjetterström, Sweden. L. 310 cm. W. 200 cm.

Literature: Tyra Lundgren: “Märta Måås-Fjetterström och väv-verkstaden i Båstad”, Stockholm 1968, mentioned p. 115.

Literature: Liljevalchs konsthalls catalogue: “Märta Måås-Fjetterström, Märta flyger igen, 90 år med Märta Måås-Fjetterström”, Värnamo 2009, red version ill. p. 153.

*Literature: Viggo Steen Møller: “En bok om Barbro Nilsson”, Höganäs 1977, green version ill. p. 68.
DKK 80,000–100,000 / € 10,500–13,500*



730

**730
FINN JUHL**

b. Frederiksberg 1912, d. Ordrup 1989

“BO 55”. Freestanding two seater sofa with round, tapering stained beech legs. Seat, sides and back upholstered with white wool by Hanne Vedel, sides and back fitted with buttons. Designed 1946. This example made 1950–1960s by Bovirke. L. 139 cm.

DKK 40,000–60,000 / € 5,350–8,050

**731
FINN JUHL**

b. Frederiksberg 1912, d. Ordrup 1989

“Fireplace Chair”. A pair of teak easy chairs with cross bars below seat. Seat, back and cushions upholstered with light blue wool. Model BO 46. Designed 1946. These examples manufactured approx. 1950s by Bovirke. (2)

DKK 100,000 / € 13,500



731

732
BØRGE MOGENSEN

b. Aalborg 1914, d. Gentofte 1972

Desk with tubular steel frame. Teak top, fold-down leaf and drawer section with two drawers in front, metal handles. This example manufactured 1950-1960s by Søborg Møbler. H. 70.5 cm. L. 130/180 cm. W. 80 cm.

Model presented at the Spring exhibition in 1953, at Kunstindustrimuseet i Copenhagen.

Literature: *Bygge & Bo*, spring 1953, p. 6 and p. 26.

Literature: Per H. Hansen & Klaus Petersen. "Danish Furniture guide", p. 115. DKK 25,000 / € 3,350



732

733
HANS J. WEGNER

b. Tønder 1914, d. Gentofte 2007

"W2". Set of six teak dining chairs. Seat with woven cane, loose seat cushions upholstered with brown leather. These examples manufactured approx. 1950-1960s by C.M. Madsen, stamped by maker. (6)

DKK 30,000-40,000 / € 4,000-5,350



733

734
IB KOFOD-LARSEN

b. 1921, d. 2003

Freestanding teak desk, right side mounted with drawer section with two drawers in front, carved handles. This example made 1960s by Christensen & Larsen Cabinet-makers. H. 73 cm. L. 159.5 cm. W. 85 cm.

Similar model with two drawers presented at The Copenhagen Cabinetmakers' Guild Exhibition at Designmuseum Danmark, 1958.

Literature: Grete Jalk [ed.]: "40 Years of Danish Furniture Design", vol. 4, p. 48-49.

DKK 25,000-30,000 / € 3,350-4,000



734

735
HANS J. WEGNER

b. Tønder 1914, d. Gentofte 2007

"The Chair". Teak armchair. Seat upholstered with black leather. Model JH 503. Designed 1949. This example made approx. 1960s by cabinetmaker Johannes Hansen, stamped.

Model presented at The Copenhagen Cabinetmakers' Guild Exhibition at Designmuseum Danmark, 1949.

Literature: Grete Jalk [ed.]: "40 Years of Danish Furniture Design", Vol. 3, pp. 98-101 and p. 140-142.

DKK 20,000 / € 2,700



735

736

ANN - MARI LINDBOM

b. 1916, d. 1992, married Forsberg

"Gulbroka". Handwoven wool carpet in "rölakan" flatweave technique. Geometric pattern in shades of yellow and beige with green details. Signed AML and AB MMF. Designed 1944. This example made second half of 20th century by AB Märta Måås-Fjetterström, Sweden. L. 240 cm. W. 200 cm.

Literature: Tyra Lundgren: "Märta Måås-Fjetterström och väv-verkstaden i Båstad", Stockholm 1968, model ill. fig. 63, mentioned p. 116.

Literature: Liljevalchs konsthalls catalogue: "Märta Måås-Fjetterström, Märta flyger igen, 90 år med Märta Måås-Fjetterström", Värnamo 2009, model ill. pp. 162-163. DKK 30,000 / € 4,000

737

HANS J. WEGNER

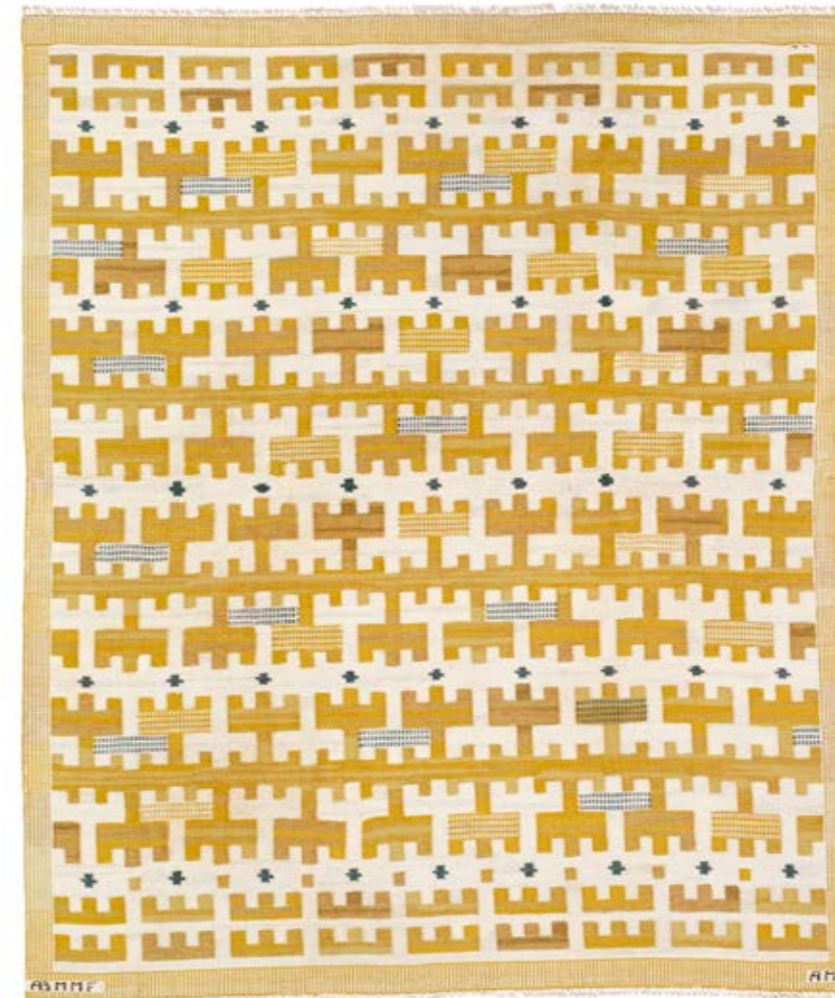
b. Tønder 1914, d. Gentofte 2007

"Hammock Chair". Oak chaise longue, seat and back with flag halyard with brass fittings. Loose neck cushion upholstered with white linnen fabric with fringes. Model GE 2. This example manufactured 1960-1970s by Getama, Gedsted. L. 183 cm.

Model presented at The Scandinavian Furniture Fair in Malmö, Sweden 1967.

Literature: Noritsugu Oda: "Danish Chairs", ill. and referred to on p. 123.

Literature: "Mobilia", no. 143, 1967. DKK 60,000-80,000 / € 8,050-10,500



736

738

HANS J. WEGNER

b. Tønder 1914, d. Gentofte 2007

"Valet Chair". Sculptural, solid oak chair. Solid teak seat with storage space underneath. Model JH 540. Designed 1953. This example made approx. 1950-1960s by cabinetmaker Johannes Hansen, stamped. Model presented at the Cabinetmaker's Guild Exhibition at Designmuseum Danmark, 1953.

Literature: Grete Jalk [ed]: "40 Years of Danish Furniture Design", vol. 3, pp. 244-247.

DKK 80,000 / € 10,500



738



739

739

MÄRTA MÅÅS-FJETTERSTRÖM

b. Kimstad 1873, d. Helsingborg 1941

“Taraxacum” (Dandelions). Handwoven wool tapestry in “gobeläng” flatweave technique. Flower motifs in green, brown and yellow on light-coloured base. Signed MMF, back with textile label. Designed 1930. This example made before 1941 by Märta Måås-Fjetterström, Sweden. L. 245 cm. W. 152 cm. *Literature: Tyra Lundgren: “Märta Måås-Fjetterström och väv-verkstaden i Båstad”, Stockholm 1968, ill. p. 48, and fig 35, mentioned p. 113.*

Literature: Liljevalchs konsthalls catalogue: “Märta Måås-Fjetterström, Märta flyger igen, 90 år med Märta Måås-Fjetterström”, Värnamo 2009, ill. p. 116.

DKK 80,000 / € 10,500



740

740

HANS J. WEGNER

b. Tønder 1914, d. Gentofte 2007

Piano bench with solid teak frame. Seat upholstered with brown wool. Model AP 30. This example manufactured approx. 1960s by AP Stolen. H. 51.5 cm. W. 69.5 cm. D. 41 cm. DKK 20,000 / € 2,700

741

HANS J. WEGNER

b. Tønder 1914, d. Gentofte 2007

“Papa Bear”. A wingback easy chair with teak “nails” and legs. Sides, back and seat cushion upholstered with light green wool, back fitted with buttons. Model AP 19. Designed 1951. This example manufactured approx. 1950-1960s by AP Stolen.

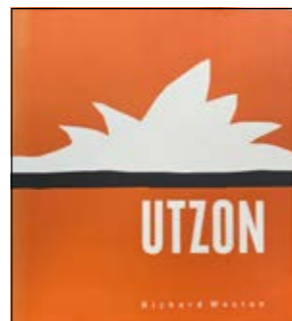
Model presented at the exhibition “Tidens Møbler” in Forum 1952. DKK 80,000-100,000 / € 10,500-13,500



741



742



742
JØRN UTZON

b. Copenhagen 1918, d. Helsingør 2008

“Vizor”. A pair of rare early pendants with adjustable white- and black lacquered metal shades, lower inside with chromed metal bar. These examples 1950s manufactured by Nordisk Solar. H. 18 cm. L. 22 cm. W. 20 cm. (3)

Literature: Richard Weston, “Utzon”, publ. by Edition Bløndal, described and ill. p. 347. Book included in the lot.

Literature: Malene Lytken, “Danske Lamper - 1920 til nu”, publ. by Strandberg Publishing, model described p. 176.

DKK 15,000–20,000 / € 2,000–2,700



744



743

743
HELGE SIBAST

b. 1908, d. 1985

Circular oak dining table, mounted on profiled, tapering legs. Top with extension and five extra leaves and two support-legs. This example manufactured 1950s by Sibast Møbler. H. 74 cm. Diam. 122 cm. L. max. 365 cm. Leaves each: W. 48.5 cm.

Provenance: Former employee at Sibast Furniture.

DKK 15,000–20,000 / € 2,000–2,700

744
HANS J. WEGNER

b. Tønder 1914, d. Gentofte 2007

“PP 701”. Set of ten chairs with tubular steel frame and cherry back with dark wood inlay. Seats upholstered with patinated natural leather. Designed 1965. These examples made approx. 1980–1990s by PP Furniture, with maker's label. (10)

DKK 25,000–30,000 / € 3,350–4,000



745

745
MÄRTA MÅÅS-FJETTERSTRÖM

b. Kimstad 1873, d. Helsingborg 1941

“Tveskott”. Handwoven wool carpet in “rölakan” flat weave technique. Polychrome, geometric pattern. Signed MMF. Designed 1930. This example made approx. 1930s by Märta Måås-Fjetterström, Sweden. L. 296 cm. W. 209 cm.

Literature: Tyra Lundgren: “Märta Måås-Fjetterström och väv-verkstaden i Båstad”, Stockholm 1968, mentioned p. 113. DKK 70,000 / € 9,400



746

746
TERENCE HAROLD
ROBSJOHN-GIBBINGS,
IN THE STYLE OF

b. 1905, d. 1976

Small solid mahogany coffee / side table with rectangular clear glass top, frame piercing top by corners. This example made 1960s for Illums Bolighus. H. 31. L. 95. W. 40.

Literature: Illums Bolighus catalogue approx. 1960, similar daybed / settee ill. DKK 18,000–20,000 / € 2,400–2,700

747
YNGVE EKSTRÖM

b. Hagafors 1913, d. 1988

“Dymling”. Freestanding three seater solid pine sofa. Loose cushions in sides, seat and back upholstered with sand coloured canvas. This example made 1970s for Swedese. L. 236 cm.

DKK 25,000 / € 3,350



747

748
INGO MAURER

b. Tyskland 1932

“Ju-Yon” Bamboo pendant from the “Uchiwa” series. 14 fan-shaped leaves covered with rice paper. Adjustable suspension cord. Designed 1973. This example made 1970s for Design M, München. H. 37 cm. Diam. 55 cm.

DKK 50,000 / € 6,700



748

**749
ITSU**

Floor lamp with double brass stand, partly wrapped with leather. Adjustable arms with conical top and glass shades. This example manufactured 1960s by Itsu, Finland, stamped by maker. H. 160 cm.

DKK 20,000–25,000 / € 2,700–3,350



**750
BRUNO MATHSSON**

b. Värnamo, Sverige 1907, d. s.p. 1988

“Pernilla 3”. Moulded, laminated beech chaise longue. Seat and back with pleated cognac coloured leather girths. Designed 1944. This example manufactured 1964 by Karl Mathsson, Sweden, stamped by maker. Retailer by Illums Bolighus, with retailer’s metal tag. L. approx. 170 cm.

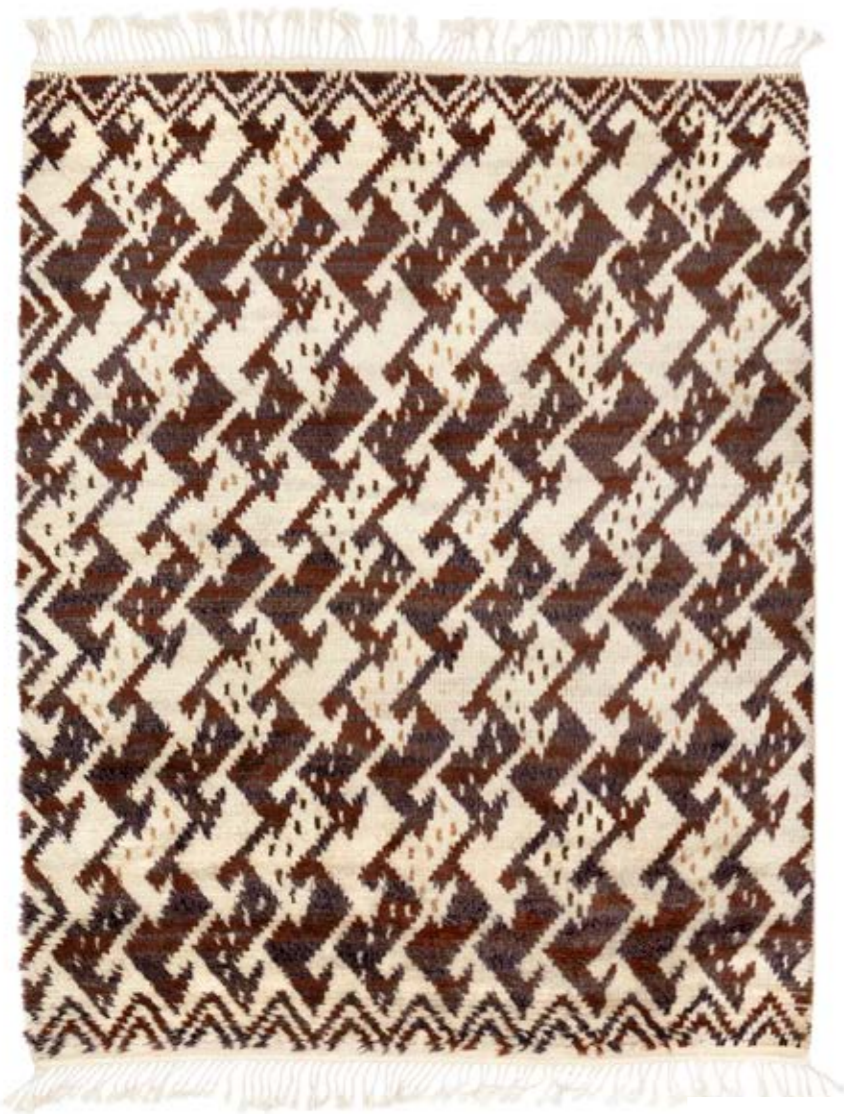
DKK 30,000–40,000 / € 4,000–5,350



**751
CARL-GUSTAV HIORT AF ORNÄS**
b. 1911

“Triennale”. A pair of teak easy chairs. Armrests covered with patinated leather band, back with pleated leather cords. Loose cushions in seat and back upholstered with brown leather. These examples made approx. 1960s under licence by Gösta Westerberg Möbel AB, Sweden. (2)
Model presented at the Finnish pavillion at the 1957 Milano Triennale.

*Literature: Andreas Siesing: "Svenska Möbler", ill. p. 113.
DKK 30,000 / € 4,000*



752

752
ANN - MARI LINDBOM

b. 1916, d. 1992, married Forsberg

"Kråkan" (The Crow). Handmade wool carpet in "rya" technique. Geometric pattern in shades of brown and sand-coloured. Designed 1946. Signed AML and AB MMF. This example made after 1946 by AB Märta Måås-Fjetterström, Sweden. L. 249 cm. W. 200 cm.

Literature: Tyra Lundgren: "Märta Måås-Fjetterström och väv-verkstaden i Båstad", Stockholm 1968, mentioned p. 116.

DKK 25,000 / € 3,350

753
ART NOUVEAU

A profiled mahogany Art Nouveau style armchair, front legs mounted with brass castors. Seat and back upholstered with original, patinated coarse brown leather, fitted with nails. This example made approx. 1910-1920s, Germany.

DKK 20,000 / € 2,700



753



754

754
DANISH CABINETMAKER

Teak secretaire. Front with sliding doors, top with tabour door, behind which storage and four pull-out trays. This example made approx. 1940s, Denmark. H. 97 cm. W. 115 cm. D. 52 cm.

DKK 15,000-20,000 / € 2,000-2,700

755
EDVARD KINDT-LARSEN

b. Frederiksberg 1901, d. Gentofte 1982

Elm wood armchair, back with vertical bars. Loose cushions in seat and back upholstered with green wool. This example made 1930s by cabinetmaker Gustav Bertelsen.

DKK 20,000 / € 2,700



755



756

756
FRITZ HANSEN
 Set of six mahogany and stained beech chairs. Seat and back upholstered with patinated brown Niger leather, fitted with brass nails. These examples manufactured 1930-1940s by Fritz Hansen, stamped. (6) *DKK 30,000 / € 4,000*

757 ©
LYSBERG, HANSEN & THERP
 Brazilian rosewood console. Front with two doors and three drawers with brass profiles. This example made early 1940s for Lysberg, Hansen & Therp, with maker's tag. H. 69. L. 119/124,5. D. 47/50. *DKK 20,000 / € 2,700*



757



758

758
FRITZ HANSEN
 A pair of wingback chairs with stained beech frame. Upholstered with brown leather, back fitted with buttons. These examples manufactured 1950s by Fritz Hansen. (2) *DKK 60,000 / € 8,050*

759
LYSBERG, HANSEN & THERP
 A pair of dark stained mahogany bedside tables. Front with two drawers with brass handles and profiles, underlying shelf. These examples manufactured approx. 1930s for Lysberg, Hansen & Therp, with maker's tag. H. 56 cm. W. 51.5 cm. D. 33 cm. (2) *DKK 15,000-18,000 / € 2,000-2,400*



759



760

760
FRITS HENNINGSEN

b. 1889, d. 1965

Mahogany sofa/daybed with wall mounted backrest. Upholstered with green wool by master upholsterer Holger Post. This example made approx. 1940s by cabinetmaker Frits Henningsen. L. 191 cm. W. 70 cm. *Provenance: Cabinetmaker formerly employed at Frits Henningsen's workshop.*

DKK 15,000–20,000 / € 2,000–2,700

761
FRITS HENNINGSEN

b. 1889, d. 1965

A pair of stained beech and nutwood side tables, on carved, tapering legs. Front with profiled drawer with brass handle. These examples made approx. 1940s by cabinetmaker Frits Henningsen, stamped no. 5389. H. 60 cm. W. 50 cm. D38 cm.

Provenance: Cabinetmaker formerly employed at Frits Henningsen's workshop.

DKK 15,000–20,000 / € 2,000–2,700



761



762

762
TH. VALENTINER

Adjustable floor lamp with patinated brass frame and green lacquered metal shade. Model THV-376. This example manufactured 1960s for retailer Poul Dinesen. H. 135 cm. *DKK 15,000 / € 2,000*

763
FRITS HENNINGSEN

b. 1889, d. 1965

Circular mahogany table with sweeping frame with brass shoes. This example made approx. 1940s by cabinetmaker Frits Henningsen, stamped no. 1608. H. 64 cm. Diam. 105 cm.

Provenance: Cabinetmaker formerly employed at Frits Henningsen's workshop.

DKK 15,000–20,000 / € 2,000–2,700



763



764

**764
HELGE BRANDT**

b. 1924, d. 1982

Unique teak wedding cupboard. Front with eight drawers and tabour door. Black lacquered metal frame. Yellow painted edges and black lacquered sides. This example made 1940-1950s, presumably by cabinetmaker Knud Juul-Hansen. H. 98 cm. W. 104 cm. D. 47 cm.

Provenance: Helge Brandt. Acquired by present owner from Brandt's family. Made by Helge Brandt for his bride.

DKK 30,000 / € 4,000



765



**765
HELGE BRANDT**

b. 1924, d. 1982

Stool and side chair with brown lacquered metal frame. Brass details. Upholstered with resp. dark green and brownish green leather. These examples manufactured approx. 1930-1940s by Lysberg, Hansen & Therp. (2)

DKK 20,000-25,000 / € 2,700-3,350

**766
JUST ANDERSEN**

b. Godhavn, Greenland 1884, d. Glostrup 1943

"Kolonne". Large patinated "disko"-metal table lamp. Marked monogram Just A., design no. 1868. Le Klint pleated white acrylic lamp shade included. H. incl. shade holder 65 cm. H. incl. shade 70 cm.

DKK 15,000-18,000 / € 2,000-2,400



766

**767
JOHAN ROHDE**

b. Randers 1856, d. Hellerup 1935

A pair of mahogany armchairs, front of armrests with carved swirl. Front of seat and back with brass decoration. Seat upholstered with white lightly patterned fabric. These examples made approx. 1910-1920s by Bros. H.P. & L. Larsen. (2)

Drawing for similar model to be found in the library of Designmuseum Danmark.

DKK 80,000-100,000 / € 10,500-13,500



767



768
POUL HENNINGSEN

b. Ordrup 1894, d. Hillerød 1967

“PH-1/1 Cascade”. Bronzed brass six-arm chandelier. Brown bakelite socket houses. Shade fittings marked “PH-1” and “Patented”. Amber coloured glass shades. This example manufactured 1930s by Louis Poulsen. H. 35 cm. Diam. 68 cm.

Literature: “Light Years Ahead!”, ill. pp. 196-197.

DKK 40,000 / € 5,350



769
KAARE KLINT

b. Frederiksberg 1888, d. Copenhagen 1954

Freestanding two seater sofa on six-legged mahogany cross frame. Sides, seat and back upholstered with black leather, fitted with brass nails. Model 4118. Designed 1930. This example made approx. 1970s by Rud. Rasmussen Cabinetmakers, with maker’s paper label. H. 86 cm. D. 77 cm. L. 134 cm.

Label no. 31333.

Literature: Gorm Harkær, Klintiana: “Kaare Klint”, vol 2, p. 93.

DKK 30,000–40,000 / € 4,000–5,350



770
EDVARD KINDT-LARSEN

b. Frederiksberg 1901, d. Gentofte 1982

TOVE KINDT-LARSEN

b. 1906, d. 1994

Solid teak swivel chair with oblique, tapering legs. Seat and back upholstered with original black leather. Designed 1957. This example made approx. 1960s by Thorald Madsen Cabinetmakers, with maker’s brass tag. Seat: H. 44 cm.

Model presented at The Copenhagen Cabinetmakers’ Guild Exhibition at Designmuseum Danmark, 1957.

Literature: Grete Jalk [ed.]: “40 Years of Danish Furniture Design”, vol. 4, ill. p. 25. DKK 25,000–30,000 / € 3,350–4,000

771 ©
TOVE KINDT-LARSEN

b. 1906, d. 1994

Circular Cuban mahogany coffee table. Top with raised edge. Curvy rails between “double legs” with Brazilian rosewood “shoes”. Designed and made 1946 by cabinetmaker Gustav Bertelsen. H. 67.5 cm. Diam. 96 cm.

Model presented at The Copenhagen Cabinetmakers’ Guild Exhibition at Designmuseum Danmark, 1946.

Literature: Grete Jalk [ed.]: “40 Years of Danish Furniture Design”, vol. 2, p. 289. DKK 30,000 / € 4,000





772

**772 ©
FRODE HOLM**

Freestanding Brazilian rosewood cabinet on solid "Chinese" frame with brass "shoes". Profiled front with two doors and five drawers with brass handles. Interior resp. with shelves and pull-out trays. This example made approx. 1971 by cabinetmaker William Christensen for retailer Illums Bolighus. H. 150 cm. W. 107.5 cm. D. 45.5 cm.

Provenance: Acquired approx. 1971 by present owner's family at Illum's Bolighus.

Literature: Illums Bolighus catalogue, approx. 1960. Cabinet with similar frame ill. p. 99.

DKK 40,000–50,000 / € 5,350–6,700

**773 ©
FRODE HOLM**

Freestanding Brazilian rosewood console with brass "shoes". Front with seven profiled drawers with brass handles. This example made approx. 1971 by cabinetmaker William Christensen for retailer Illums Bolighus. H. 72.5 cm. L. 130 cm. D. 40 cm.

Provenance: Acquired approx. 1971 by present owner's family at Illum's Bolighus.

Literature: Illums Bolighus catalogue approx. 1960, p. 98. DKK 25,000–30,000 / € 3,350–4,000



773



**774 ©
OLE WANSCHER**

b. Frederiksberg 1903, d. Charlottenlund 1985

"Rungstedlund". Brazilian rosewood dining room suite, consisting of a set of six chairs and a dining table with extension and three leaves with rail and a support leg. Seats upholstered with black leather. Designed 1967. These examples manufactured approx. 1970s by P. Jeppesen, with maker's metal tag. Table: H. 74 cm. L. 145/210/275/340 cm. W. 105.5 cm. (7) *DKK 20,000 / € 2,700*



774

775 * ©
OLE WANSCHER

b. Frederiksberg 1903, d. Charlottenlund 1985

A Brazilian rosewood armchair. Seat upholstered with black leather. Designed 1954. This example made approx. 1960s by cabinetmaker A.J. Iversen.

Model presented at The Copenhagen Cabinetmakers' Guild Exhibition at Designmuseum Danmark, 1954.

Literature: Grete Jalk [ed.]: "40 Years of Danish Furniture Design", vol. 3, pp. 286-287. DKK 30,000-40,000 / € 4,000-5,350

776 ©
OLE WANSCHER

b. Frederiksberg 1903, d. Charlottenlund 1985

Brazilian rosewood armchair. Seat upholstered with black leather. Model J2833. Designed 1958. This example made approx. 1960s by cabinetmaker A.J. Iversen, with maker's paper label.

DKK 30,000-40,000 / € 4,000-5,350



777 ©
OLE WANSCHER

b. Frederiksberg 1903, d. Charlottenlund 1985

"Egyptian Stool". A Brazilian rosewood folding stool. Black leather seat. Designed 1957. This example made 1960s by cabinetmaker A.J. Iversen. H. 41.5 cm.

Model presented at The Copenhagen Cabinetmakers' Guild Exhibition at Designmuseum Danmark, 1957.

Literature: Grete Jalk [ed.]; "40 Years of Danish Furniture Design", vol. 4, ill. pp. 20-21.

Literature: Ole Wanscher; "Møbelkunsten - studier i møbeltypernes æstetik og historie", pp. 34-37.

DKK 40,000-50,000 / € 5,350-6,700

778
OLE WANSCHER

b. Frederiksberg 1903, d. Charlottenlund 1985

"T-Chair". Mahogany chair. Seat upholstered with black horsehair with black leather edgings. Designed 1957. This example made 1960s by cabinetmaker A.J. Iversen, with maker's paper label.

Provenance: Gunnar Bratvold, publisher of "Mobilia" - a furniture, decorative arts and interior design magazine.

Literature: Bodil Busk Laursen, Søren Matz, Chr. Holmsted Olesen [ed.]: "Mesterværker 100 Aars Dansk Møbelsnedkeri", ill. p. 12.

Literature: Grete Jalk [ed.]: "40 Years of Danish Furniture Design", vol. 4, pp. 20-21.

DKK 25,000-30,000 / € 3,350-4,000





779

779

DANISH DESIGN

Ceramic floor lamp with glaze in shades of grey, red and purple. Cylindrical linnen shade. Made approx. 1970s, Denmark. Base: H. 116 cm. H. incl. shade: H. 185 cm.

DKK 12,000–15,000 / € 1,600–2,000

780 ©

ORLA MØLGAARD-NIELSEN

b. Ålborg 1907, d. Hellerup 1993

Brazilian rosewood easy chair. Seat and back upholstered with blue wool, back fitted with buttons. This example made approx. 1940 by cabinetmaker Jacob Kjær.

Provenance: Consigned alongside lot no. 781 and 782. These three lots was acquired simultaneously by present owner's family.

DKK 20,000–25,000 / € 2,700–3,350



780



781



782

781 ©

ORLA MØLGAARD-NIELSEN

b. Ålborg 1907, d. Hellerup 1993

A pair of Brazilian rosewood easy chairs. Seat and back upholstered with light wool, back fitted with buttons. These examples made approx. 1940 by cabinetmaker Jacob Kjær. (2)

Provenance: Consigned alongside lot no. 9780 and 782. These three lots was acquired simultaneously by present owner's family.

DKK 40,000–50,000 / € 5,350–6,700

782 ©

JACOB KJÆR, ATTRIBUTED

b. 1896, d. 1957

Circular Brazilian rosewood coffee table with curvy stretchers. Top with raised edge and decorated with marquetry depicting oak tree. This example made approx. 1940, presumably by cabinetmaker Jacob Kjær. H. 58.5 cm. Diam. 95 cm.

Provenance: Consigned alongside lot no. 780 and 781. These three lots was acquired simultaneously by present owner's family.

DKK 30,000 / € 4,000

783
PETER HVIDT

b. Copenhagen 1916, d. s.p. 1986

Freestanding three seater sofa with stained wood frame. Seat and "floating" back upholstered with light rose coloured fabric, back fitted with buttons. This example made 1940-1950s by cabinetmaker Ludvig Pontoppidan. L. 186 cm.

Variant of chair presented at the Copenhagen Cabinetmakers' Guild Exhibition in 1943. This sofa shows the clear inspiration from Swedish Architect Erik Gunnar Asplund that can be found in the furniture of many Danish designers and architects, including Finn Juhl in the early 1940s.

Literature: Grete Jalk [ed.]: "40 Years of Danish Furniture Design", vol. 2, ill. p. 206. DKK 30,000-40,000 / € 4,000-5,350



783



784

784
LYSBERG, HANSEN & THERP

A pair of brass cocktail tables. Circular mirror glass top. These examples manufactured approx. 1940s by Lysberg, Hansen & Therp. H. 57.5 cm. Diam. 45.5 cm. (2) DKK 25,000 / € 3,350

785
JO HAMMERBORG

b. 1920, d. 1982

"Monolit". A pair of brass floor lamps. Leather covered stem. White fabric shades. These examples manufactured approx. 1960s by Fog & Mørup. H. 160 cm. (2)

DKK 20,000-25,000 / € 2,700-3,350



785



786

786
PETER HVIDT

b. Copenhagen 1916, d. s.p. 1986

ORLA MØLGAARD-NIELSEN

b. Ålborg 1907, d. Hellerup 1993

"X Table". Rare coffee table with rectangular teak top with raised sides. Mounted on mahogany cross-legs with inlays, stretchers of brass. Model 6743. This example manufactured 1960s by Fritz Hansen. Retailled by Illums Bolighus, with retailer's metal tag. H. 50 cm. W. 59.5 cm. L. 180 cm.

Literature: Mobilia 1961.

DKK 20,000-25,000 / € 2,700-3,350

787
MOGENS KOCH

b. Frederiksberg 1898, d. Copenhagen 1992

A solid pine wall unit comprising 12 book-cases. These examples made 1980s by Rud. Rasmussen Cabinetmakers, with maker's paper label. H./W. 76 cm. D. 27.5 cm. (12)

DKK 60,000 / € 8,050



787



788



788
FRITZ HANSEN

A pair of high back easy chairs with dark stained beech frames. Seat and back with woven seagrass. These examples made approx. 1930-1940s by Fritz Hansen. (2) DKK 20,000-25,000 / € 2,700-3,350



789

789^{ARR}
JUDITH JOHANSSON

b. Trollhättan 1916, d. Tenerife 1993

"Dungen". Handwoven wool carpet. Purple and green geometric pattern on grey base. Signed JJ. This example made approx. 1960s, Sweden. L. 303 cm. W. 247 cm. DKK 40,000 / € 5,350



790

790
JENS H. QUISTGAARD

b. Copenhagen 1919, d. 2008

Square oak coffee table with raised edge, top with blue/grey "Azur" stoneware tiles. Model 750. This example manufactured 1960-1970s by Nissen, stamped. H. 52. L./W. 87 cm.

Literature: *Nissen Catalogue, May 1966.*

DKK 15,000-20,000 / € 2,000-2,700



791

791
MÄRTA MÅÅS-FJETTERSTRÖM

b. Kimstad 1873, d. Helsingborg 1941

“Röda Porten”. Handwoven wool carpet in “rölakan” flatweave technique. Pattern in red and green nuances. Signed MMF. Designed 1936. This example made late 1930s by Märta Måås-Fjetterström, Sweden. L. 195 cm. W. 175 cm.

Literature: Tyra Lundgren: “Märta Måås-Fjetterström och väv-verkstaden i Båstad”, Stockholm 1968, mentioned p. 114. DKK 25,000 / € 3,350

792
JENS BRØTTERUP

b. c. 1752, d. 1832

Cuban mahogany armchair. Front legs with brass “shoes”, armrests with brass inlays. Seat upholstered with patinated leather. This example made 1950s by cabinetmaker Jacob Kjær.

Jens Brøtterup was the most recognized Danish chair maker around 1800. Cabinetmaker Jacob Kjær took his classical chair and made an updated version around 1950. DKK 15,000 / € 2,000



792



793

793
H. BROCKMANN-PETERSEN,
ATTRIBUTED

Furniture designer 1950-1960s

Freestanding two seater sofa with round, tapering stained wood legs. Sides, seat and back upholstered with light bouclé, back fitted with leather “buttons”. This example made approx. 1950s, presumably by cabinetmaker Louis G. Thiersen & Søn. L. 142 cm.

DKK 20,000–25,000 / € 2,700–3,350

794
JACOB KJÆR, ATTRIBUTED

b. 1896, d. 1957

A teak console table with profiled top. Front with three drawers with carved handles. This example made approx. 1950–1960s, presumably by cabinetmaker Jacob Kjær. H. 70 cm. L. 120 cm. D. 39.5 cm.

DKK 15,000–20,000 / € 2,000–2,700



794



795

**795
KAJ GOTTLOB**

b. Copenhagen 1887, d. 1976

Three brass double wall lamps. Opaline glass shades. These examples manufactured approx. 1950s by Lyfa. H. 30 cm. W. 35 cm. D. 20 cm. (3)

Literature: Fog & Mørup catalogue 1952–1953.

DKK 15,000–20,000 / € 2,000–2,700

**796
OLE WANSCHER**

b. Frederiksberg 1903, d. Charlottenlund 1985

Three seater stained beech sofa. Sides, seat and back upholstered with natural leather. This example made 1950–1960s by cabinetmaker A.J. Iversen. L. 185 cm. DKK 20,000–25,000 / € 2,700–3,350



796

**797
MÄRTA MÅÅS-FJETTERSTRÖM**

b. Kimstad 1873, d. Helsingborg 1941

"Tornet" (The Tower). Handmade wool carpet in "knotted pile" technique. Polychrome pattern on red base. Signed AB MMF. Designed 1932. This example made after 1941 by AB Märta Måås-Fjetterström, Sweden. L. 311 cm. W. 205 cm.

Literature: Tyra Lundgren: "Märta Måås-Fjetterström och väv-verkstaden i Båstad", Stockholm 1968, ill. fig. 37, mentioned p. 113. DKK 80,000 / € 10,500



797

**798
HENRY FRÄNKEL**

b. start of 20th cent., d. end of 20th cent.

Freestanding three seater patinated oak sofa bench, back with woven cane. Seat upholstered with patinated leather, fitted with leather covered buttons. This example made approx. 1930, Denmark. L. 155.5 cm.

Provenance: Made and designed approx. 1930 for present owner's family. Hence by descent.

DKK 15,000–20,000 / € 2,000–2,700



798



799

799
SEVERIN HANSEN JR.

b. 1936, d. 2020, Denmark, 20th century

"Bridge Lamp". A pair of stained beech floor lamps on tripod base. Light fabric shades. These examples manufactured 1950s by Haslev Møbelsnedkeri. H. 154–157 cm. (2)

Literature: "Bygge og Bo", vol. 16, autumn 1950, no. 2–3.
DKK 30,000 / € 4,000

800
KAARE KLINT

b. Frederiksberg 1888, d. Copenhagen 1954

A pair of mahogany bergères with rosewood inlays and "shoes". Sides, seat and back with woven cane. Loose cushions in seat and back upholstered with patinated natural leather. Model 4488. Designed 1931. These examples made approx. 1980s by Rud. Rasmussen Cabinetmakers, with maker's paper label. (2)

Label no. 43284.

Literature: Gorm Harkær, Klintiana: "Kaare Klint", vol. 2, ill. and mentioned p. 86. Literature: Grete Jalk [ed.]: "40 Years of Danish Furniture Design", vol. 4, ill. p. 214.

DKK 40,000–50,000 / € 5,350–6,700



800



801

801
MOGENS KOCH

b. Frederiksberg 1898, d. Copenhagen 1992

Solid elm wood cabinet for drawings. Front with eight drawers in two sizes with round, carved handles. This example made approx. mid 1970s by Rud. Rasmussen Cabinetmakers, with maker's paper label. H. 81 cm. W. 76 cm. D. 55 cm.

Label no. 36572. DKK 40,000 / € 5,350

802
KAARE KLINT

b. Frederiksberg 1888, d. Copenhagen 1954

Freestanding two seater sofa on six-legged mahogany cross frame. Sides, seat and back upholstered with natural leather. Model 4118. Designed 1930. This example made approx. 1980s by Rud. Rasmussen Cabinetmakers. H. 87 cm. D. 78 cm. L. 134 cm.

Literature: Gorm Harkær, Klintiana: "Kaare Klint", vol 2, p. 93. DKK 40,000 / € 5,350



802



803

803 ©
NIELS VODDER

b. 1892, d. 1982

Brazilian rosewood cabinet with tall frame with round, tapering legs. Front with two doors and five drawers. Maple interior with adjustable shelves. Designed 1954. This example made 1960s by cabinetmaker Niels Vodder. Retailed by Illums Bolighus, with retailer's metal tag. H. 140 cm. W. 110/119 cm. D. 43.5 cm. DKK 75,000–100,000 / € 10,000–13,500

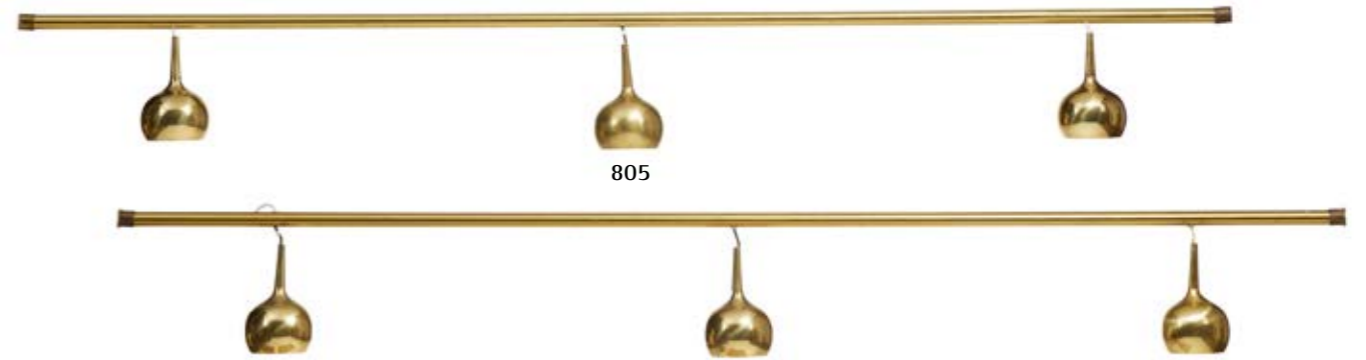
804 ©
FINN JUHL

b. Frederiksberg 1912, d. Ordrup 1989

“BO 101”. A Brazilian rosewood table/bench with brass sides. Anodized steel frame with tall rosewood “shoes”. Designed 1953. This example manufactured 1960s by Bovirke. Retailed by Illums Bolighus, with retailer's metal tag. H. 41 cm. L. 112.5 cm. W. 45.5 cm. *Literature: Esbjørn Hiorth: “Arkitekten Finn Juhl”, 1990, ill. pp. 56–57.* DKK 25,000–30,000 / € 3,350–4,000



804



805

805
HANS - AGNE JAKOBSSON

b. 1919, d. 2009

A pair of large brass lamps with three shades. Wall-to-wall mounting. These examples manufactured approx. 1960s by Markaryd, Sweden. L. 209 cm. (2) DKK 15,000–20,000 / € 2,000–2,700

806 ©
NIELS VODDER

b. 1892, d. 1982

“NV 54”. Freestanding Brazilian rosewood sideboard mounted on round tapering legs. Front with two tambour doors behind which maple shelf and trays. Designed 1954. This example made 1960s by cabinetmaker Niels Vodder. H. 87 cm. L. 200/207.5 cm. W. 57 cm.

Literature: Niels Vodder catalogue, May 1956.

DKK 80,000–100,000 / € 10,500–13,500



806

mobilia



Gunnar Bratvold



The piano and artichoke at Borupgaard, 1960s



Poul Henningsen and Gunnar Bratvold



807

807

POUL HENNINGSEN

b. Ordrup 1894, d. Hillerød 1967

"PH Grand Piano". Mignon type, seven octaves with black stained wood and chromed steel frame. Edge covered with original patinated natural leather. Lyre and three curved chromed steel legs. Perspex lid and sheet holder, divided with chromed steel lists. Designed 1931. This example made approx. 1932 by Andreas Christensen. H. 94 cm. L. 148 cm. W. 145 cm.

Provenance: Gunnar Bratvold and Ingelise Bratvold. Since passed down to the current owner through inheritance.

Poul Henningsen's Mignon grand piano, which he designed in 1931, is one of the most characteristic examples of modern design of the period. It is a musical instrument that transcends its function and, with its distinctive and highly sculptural form, takes a grand piano as an instrument from classicism and elitism directly into modernism. It is thus also transformed into a sculpture, with a visual impression even more immediate than the music played on it. As only a few of the PH grand piano were made, it also became the ultimate status symbol among Danish progressive liberals (Kulturadikale) of the 1930s, a rallying point for the new tones of the day and for those with a new, transparent, rational and modern way of thinking.

The grand piano retained its iconic status in post-war Denmark among the circle of artists and architects, among others, who together created the concept of Danish Design and elevated it to world renowned.

The journal Mobilia played a central role in this.

What started out as a dull trade journal for the furniture industry in Denmark was transformed under Gunnar Bratvold's ownership. With him and his wife Ingelise as publishers, it became the standard-bearer for Danish Furniture Design and Danish Design as a whole.

The journal became the place where all things new were presented – and not just new furniture, but new journal graphics and layout, too.

A number of renowned architects and artists were attached to the magazine as editors, with Poul Henningsen perhaps the most well-known of them.

The publisher's own home, first Eriksholm Manor and later Borupgård in North Zealand, also became a festive meeting point for artists, architects and manufacturers throughout the 1960s.

So, it was quite natural for Poul Henningsen to recommend that his friend Gunnar Bratvold buy this grand piano when the opportunity arose in 1965 to acquire one of what are thought to be 12 first examples from the 1930s made by Andreas Christensen.

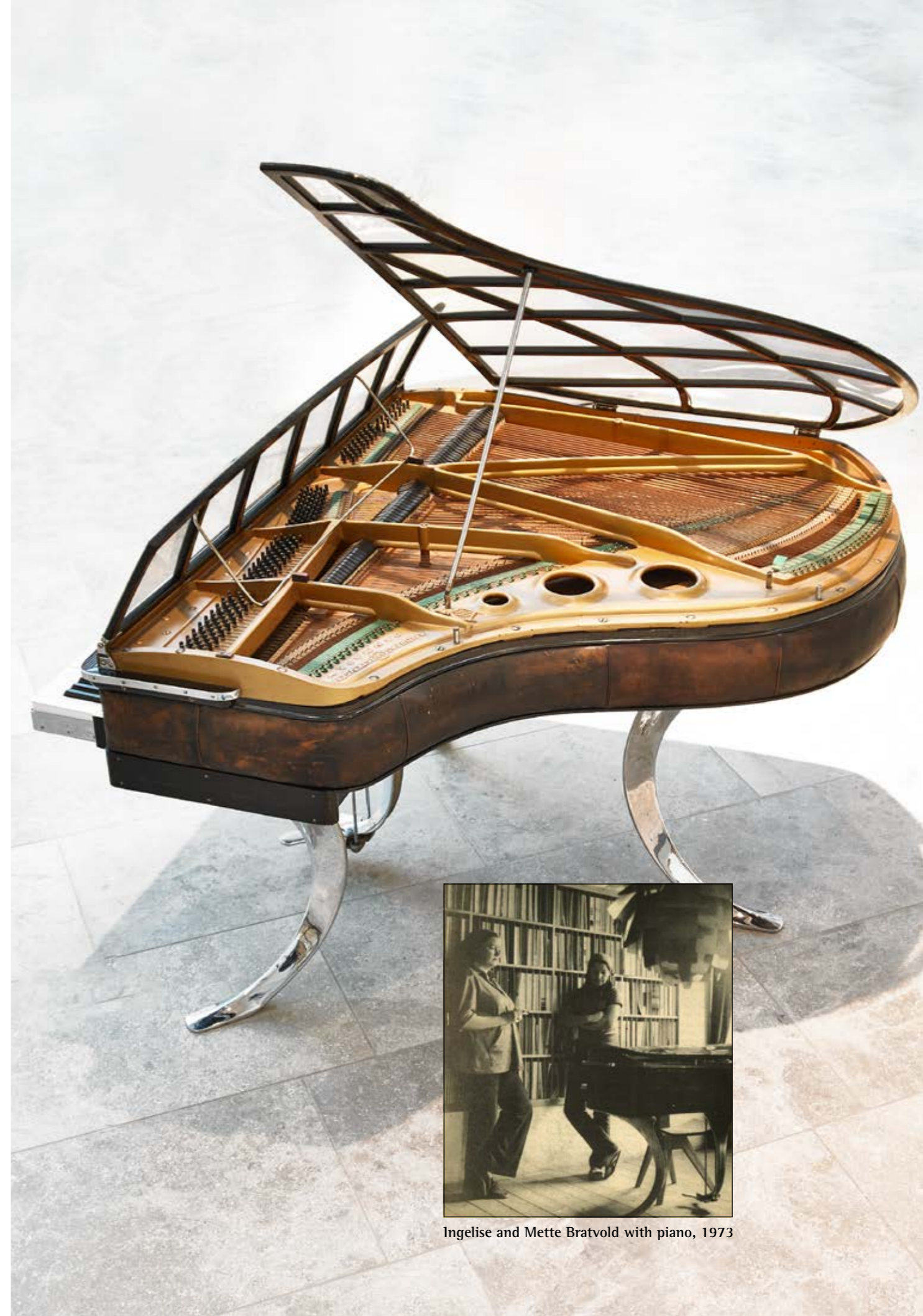
Gunnar Bratvold jumped at the chance, and the grand piano was moved into Borupgaard, where it became the permanent focal point in an otherwise changing exhibition of art and furniture.

Poul Henningsen could only be pleased to find that above it would hang the first edition of his "Artichoke" pendant. This had been a wedding present from Poul Henningsen and his wife Inger to Ingelise and Gunnar Bratvold when they were married in 1963. This lamp now hangs at Design Museum Denmark.

The grand piano is at Borupgaard a centrepiece in festive settings, and many famous people have heard and played it. The seller states that the cigarette burns that can be seen on the fluted Bakelite moulding just above the keys are thought to have been caused by Ben Webster.

Original purchase agreement from 1965 included.

DKK 750,000–1,000,000 / € 100,000–135,000



Ingelise and Mette Bratvold with piano, 1973

808

PEDER MOOS

b. Nybøl 1906, d. Bredebro, Tønder 1991

Mahogany serving trolley mounted on castors with brass fittings. Top and underlying shelf with "raw" glass, corners with circular inlays of light wood. Stamped "V. Birksholm, Jyllingevej 58, samarbejde med & efter model af Peder Moos 1947, nr. 46, Danmark". Designed 1942. This example made 1947 by cabinetmaker Verner Birksholm. H. 57 cm. L. 72 cm. W. 41.5 cm.

Model presented at The Copenhagen Cabinetmakers' Guild Exhibition at Designmuseum Danmark, 1942.

In the mid-1940s, Peder Moos tried to put a few of his models into production at, among others, Fritz Hansen. The current model and version is thus made in collaboration with cabinetmaker Verner Birksholm.

Literature: Grete Jalk [ed.]: "40 Years of Danish Furniture Design", vol. 2, p. 177.

DKK 30,000-40,000 / € 4,000-5,350



808



809

809

POUL HENNINGSEN

b. Ordrup 1894, d. Hillerød 1967

"PH-2/2". Adjustable browned brass "Piano" lamp. Shade fitting marked "Patented" and "PH-2". Original single layer opaline glass shades. This example manufactured 1930s by Louis Poulsen. H. 25-50 cm. L. 50 cm.

Literature: "Light Years Ahead", ill. p. 186.

DKK 150,000-200,000 / € 20,000-27,000

810
FINN JUHL

b. Frederiksberg 1912, d. Ordrup 1989

“FJ 45”. Freestanding two seater teak sofa. Unupholstered. Designed 1945. This example made approx. 1950–1960s by cabinetmaker Niels Vodder, stamped. L. 118 cm.

DKK 120,000 / € 16,000



810

811
FINN JUHL

b. Frederiksberg 1912, d. Ordrup 1989

“FJ 45”. A teak easy chair. Sides, back and loose seat cushion upholstered with blue wool, natural leather edgings. Designed 1945. This example made approx. 1950–1960s by cabinetmaker Niels Vodder, not stamped. Retailed by Illums Bolighus, with retailer's metal tag.

DKK 60,000–80,000 / € 8,050–10,500



811

812 ©
FINN JUHL

b. Frederiksberg 1912, d. Ordrup 1989

"Judas Table". Oval Brazilian rosewood dining table with extension and two extra leaves. Reverse side of top with profiled rim. Designed 1948. This example made approx. 1960s by cabinetmaker Niels Vodder, stamped by maker. H. 72 cm. L. 200/255/310 cm. W. 140 cm.

Provenance: Present table and Finn Juhl set of six chairs, lot no. 813, acquired simultaneously by original owner.

DKK 200,000–250,000 / € 27,000–33,500



812

813 ©
FINN JUHL

b. Frederiksberg 1912, d. Ordrup 1989

Very rare set of six Brazilian rosewood chairs. Seat and back upholstered with light wool. These examples made approx. 1960s by cabinetmaker Niels Vodder, all stamped by maker. (6)

Very rare model made by Vodder.

The model is basically a variation of Finn Juhl's "FJ 46" armchair, without armrests, or a refined cabinetmaker version of the more common "BO 63". From 1945 and onwards Finn Juhl worked with different variations on the same theme. The present model thus has clear kinship with the chair Juhl designed approx. 1945 for J. Anthonen.

Provenance: Present set of chairs and "Judas" table, lot no. 812, acquired simultaneously by original owner.

DKK 250,000–300,000 / € 33,500–40,000



813



814

814
POUL HENNINGSEN

b. Ordrup 1894, d. Hillerød 1967

"PH-3/2". Bronzed brass table lamp marked "Patented" and "PH-3". Shades of single layer opaline glass. This example manufactured approx. 1930 by Louis Poulsen. H. 44 cm. DKK 60,000-75,000 / € 8,050-10,000

815 ©
FINN JUHL

b. Frederiksberg 1912, d. Ordrup 1989

"FJ 50". Desk with solid Brazilian rosewood frame. "Floating" brazilian rosewod top with profiled edges. Front with drawer section with three drawers. This example made 1960s by cabinetmaker Niels Vodder, not stamped. H. 71.5 cm. L. 201 cm. W. 97 cm.

Variant of model presented at The Copenhagen Cabinetmakers' Guild Exhibition at Designmuseum Danmark, 1952.

Literature: Grete Jalk [ed.]: "40 Years of Danish Furniture Design", vol. 3, p. 232-233. DKK 60,000 / € 8,050



815



816
FINN JUHL

b. Frederiksberg 1912, d. Ordrup 1989

"FJ 42". Rarely offered mahogany armchair. Seat and back upholstered with brown leather. Designed and made approx. 1942 by cabinetmaker Niels Vodder.

Provenance: Gifted by Finn Juhl to present owner's grandmother in connection with her studies at Skolen for Boligindretning (the School of Interior Design where FJ taught), graduating class of 1955.

The model designed for the Cabinetmakers' Guild Exhibition in 1942 (see photo), hence made in few examples, for Editor Westermann's villa, amongst others.

Present chair was used by Finn Juhl, presumably in his house or at his drawing studio before he gifted it to present owner's grandmother.

The chair is an example of Finn Juhl pursuing several paths in his design – both the organically sculptural but also the more rational modernistic. This model shows features that later reappeared in several of Finn Juhl's pieces – for example the small "horns" at the top corners of the back. DKK 75,000 / € 10,000



816



817

817
PETER HVIDT,
ORLA MØLGAARD-NIELSEN

b. Copenhagen 1916, d. s.p. 1986, b. Ålborg 1907, d. Hellerup 1993

Rectangular solid teak coffee table on runner legs. Model FD 575. This example manufactured early 1960s by France & Søn, with maker's metal tag. H. 44.5 cm. L. 174.5 cm. W. 67.5 cm.

Literature: Mobilia no. 117, 1965.

DKK 15,000–18,000 / € 2,000–2,400

818
FINN JUHL

b. Frederiksberg 1912, d. Ordrup 1989

“BO 55”. Freestanding two seater sofa with round, tapering stained beech legs. Sides, seat and curvy back upholstered with light bouclé fabric, sides and back fitted with buttons. Designed 1946. This example manufactured 1950–1960s by Bovirke. H. 81 cm. L. 133 cm. D. 72 cm.

DKK 40,000 / € 5,350



818



819

819
FINN JUHL

b. Frederiksberg 1912, d. Ordrup 1989

A pair of teak easy chairs. Seat and back upholstered with Niger leather. Model FD 136. Designed and manufactured 1956 by France & Daverkosen, with maker's tag and stamp. (2)

DKK 75,000 / € 10,000



820
FINN JUHL, ATTRIBUTED

b. Frederiksberg 1912, d. Ordrup 1989

A teak dining table with profiled legs. Top with rare extension system with leaves placed underneath top. This example made late 1930s, presumably by cabinetmaker Niels Vodder. H. 71.5 cm. L. 140/173/238 cm. W. 80 cm.

The characteristic angular profile on the leg frame is a recurring trade of Finn Juhl, found especially in his early work. Similar table presented at The Copenhagen Cabinetmakers' Guild Exhibition at Designmuseum Danmark, 1938.

Literature: Grete Jalk [ed.]: "40 Years of Danish Furniture Design", vol. 2, similar table ill. p. 77.

DKK 20,000 / € 2,700



820



821

821
POUL KJÆRHOLM

b. Østervrå 1929, d. Hillerød 1980

“PK 33”. Stool with chromed steel frame. Seat cushion upholstered with patinated natural leather. Designed 1958. This example manufactured 1970s by E. Kold Christensen, stamped. Diam. 50 cm.

DKK 20,000–25,000 / € 2,700–3,350

822
POUL KJÆRHOLM

b. Østervrå 1929, d. Hillerød 1980

“PK 80”. Daybed with chromed steel frame. Grey painted wood board. Loose cushion upholstered with red leather, fitted with buttons by upholsterer Ivan Schlechter. This example manufactured approx. 2000s by Fritz Hansen, cushion stamped monogram IS. H. 32 cm. L. 190 cm. W. 82 cm.

DKK 50,000–60,000 / € 6,700–8,050



822



823

823
POUL KJÆRHOLM

b. Østervrå 1929, d. Hillerød 1980

“PK 22”. A pair of easy chairs with matte chromed steel frames. Seat and back upholstered with patinated brown leather. Designed 1956. These examples manufactured 1970s by E. Kold Christensen, stamped. (2)

DKK 30,000–40,000 / € 4,000–5,350

824
POUL KJÆRHOLM

b. Østervrå 1929, d. Hillerød 1980

“PK 61”. A square coffee table with chromed steel frame. Greenlandic marble top. Designed 1956. This example manufactured 1970s by E. Kold Christensen, stamped. H. 33 cm. W. 80 cm. L. 80 cm.

DKK 30,000–40,000 / € 4,000–5,350



824

825

PREBEN FABRICIUS

b. 1931, d. 1984

JØRGEN KASTHOLM

b. Roskilde 1931, d. Düsseldorf 2007

“Grasshopper”. Chromed steel chaise longue covered with sand coloured canvas. Loose cushions and headrest upholstered with patinated brown leather. Armrests with grain leather cord. Model FK 87. Designed 1965. This example manufactured 1960s by Alfred Kill, Germany. *DKK 80,000–100,000 / € 10,500–13,500*



825



826



827

826

POUL KJÆRHOLM

b. Østervrå 1929, d. Hillerød 1980

“PK 91”. Folding stool with matte chromed steel frame. Seat with sand coloured canvas. Designed 1961. This example manufactured 1970s by E. Kold Christensen, stamped.

DKK 40,000–50,000 / € 5,350–6,700

827

POUL KJÆRHOLM

b. Østervrå 1929, d. Hillerød 1980

“PK 91”. Folding stool with matte chromed steel frame. Seat with sand coloured canvas. Designed 1961. This example manufactured 1970s by E. Kold Christensen, not stamped.

DKK 40,000–50,000 / € 5,350–6,700



828

**828
POUL KJÆRHOLM**

b. Østervrå 1929, d. Hillerød 1980

“PK 31/2”. Freestanding two seater sofa with steel frame. Sides, back and loose cushions upholstered with natural leather. Designed 1958. This example manufactured 1970s by E. Kold Christensen, stamped. L. 137 cm.

Literature: “Poul Kjærholm”, Arkitektens Forlag, 1999, pp. 98–99. DKK 40,000–50,000 / € 5,350–6,700



830

**830
POUL KJÆRHOLM**

b. Østervrå 1929, d. Hillerød 1980

“PK 31/2”. Freestanding two seater sofa with steel frame. Sides, back and loose cushions upholstered with natural leather. Designed 1958. This example manufactured 1970s by E. Kold Christensen, stamped. L. 137 cm.

Literature: “Poul Kjærholm”, Arkitektens Forlag, 1999, pp. 98–99. DKK 40,000–50,000 / € 5,350–6,700

**829
POUL KJÆRHOLM**

b. Østervrå 1929, d. Hillerød 1980

“PK 31/1”. Easy chair with steel frame. Sides, back and loose cushions upholstered with natural leather. Designed 1958. This example 1970s manufactured by E. Kold Christensen, stamped.

Literature: “Poul Kjærholm”, Arkitektens Forlag, 1999, pp. 98–99. DKK 25,000 / € 3,350

**831
POUL KJÆRHOLM**

b. Østervrå 1929, d. Hillerød 1980

“PK 31/3”. Freestanding three seater sofa with steel frame. Sides, back and loose cushions upholstered with natural leather. Designed 1958. This example manufactured approx. 1980s by Fritz Hansen, stamped. L. 199 cm.

Literature: “Poul Kjærholm”, Arkitektens Forlag, 1999, pp. 98–99. DKK 50,000–60,000 / € 6,700–8,050



829



831



832

832
POUL HENNINGSEN

b. Ordrup 1894, d. Hillerød 1967

“PH 4/4”. Pendant with bakelite socket house, stamped “PH lampe” “Patented”. Single layer opali-ne glass shades. Shade suspension with wire legs, stamped “P.H.-4” “Patented”. This example manufactured 1930s by Louis Poulsen. Diam. 40 cm

Literature: “Light Years ahead”, p. 177.

DKK 20,000–25,000 / € 2,700–3,350



834

833
POUL KJÆRHOLM

b. Østervrå 1929, d. Hillerød 1980

“PK 54”. Dining table with cubus frame of steel. Circular top of flintrolled light/grey marble. Six-piece solid maple addition ring with stand included. Designed 1963. This example manufactured 1970s by E. Kold Christensen, stamped by maker. H. 65 cm. Diam. 140/210 cm. (2)

Literature: “Poul Kjærholm”, Arkitektens Forlag, 1999, pp. 20–21, 112–115 and 179. Literature: Frederik Sieck: “Dansk Møbelkunst”, ill. p. 151.

DKK 80,000–100,000 / € 10,500–13,500

834
POUL KJÆRHOLM

b. Østervrå 1929, d. Hillerød 1980

“PK 9”. A set of six chairs with chromed steel frame. Seat and back upholstered with reddish brown leather. Designed 1960. These examples manufactured approx. 1980–1990s by Fritz Hansen, stamped. (8)

DKK 80,000–100,000 / € 10,500–13,500



833

835
PIET HEIN

b. 1905, d. 1996

Set of five bar stools with chromed steel frame. Circular seat upholstered with brown Niger leather. Model FL 9511. Designed 1961. These examples manufactured 1979 by Fritz Hansen, three with maker's label. H. 81 cm. (5)

DKK 20,000–25,000 / € 2,700–3,350



835

836 ©
JENS H. QUISTGAARD

b. Copenhagen 1919, d. 2008

“Stokke Table”. A round Brazilian rosewood coffee table, chromed steel frame. This example manufactured 1960–1970s by Nissen. H. 47 cm. Diam. 105 cm.

DKK 20,000–25,000 / € 2,700–3,350



836



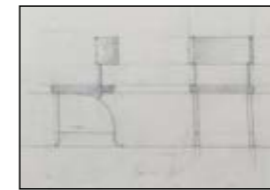
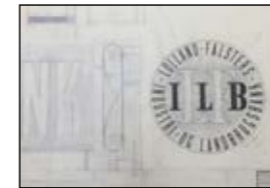
837

837 ©
SEVERIN HANSEN JR.

b. 1936, d. 2020, Denmark, 20th century

Freestanding Brazilian rosewood desk with tapering legs. Front with four drawers in rail. Model 36. This example manufactured approx. 1960s by Haslev Møbelsnedkeri, with maker's paper label. H. 73 cm. L. 143 cm. W. 75 cm.

DKK 25,000–30,000 / € 3,350–4,000



838
KAJ GOTTLOB

b. Copenhagen 1887, d. 1976

A pair of very rare, important and early modernist conference chairs with frame of nickel plated flat steel. Seat and back upholstered with red Niger leather. These examples made to order 1935 for Lolland Falsters Industri & Landbrugsbank (Industrial & Agricultural Bank), Nykøbing Falster. H. 79 cm. W. 55 cm. D. 47 cm. (2)

DKK 80,000–100,000 / € 10,500–13,500



838



839

839
VILHELM LAURITZEN

b. Slagelse 1894, d. Gentofte 1984

A pair of patinated brass wall lamps, each with three arms, mounted with opal glass shades. These examples manufactured early 1950s by Louis Poulsen. W. 38 cm. H. 30 cm. (2)

Designed for "Folkets Hus" (The People's House) for the Workers' Association. These wall lamps were in the foyer and in the large hall.

When the Workers' Association moved out, the house was empty for a few years. After a comprehensive restoration in 1996, the house reopened as VEGA - The House of Music.

The property is like two others of Vilhelm Lauritzen's buildings; the Radio House at Rosenørns Allé and the 1939 Airport Terminal at Copenhagen Airport, today a preserved building - one of the youngest buildings in Denmark to be so.

DKK 20,000-25,000 / € 2,700-3,350



840
EDVARD KINDT-LARSEN

b. Frederiksberg 1901, d. Gentofte 1982

TOVE KINDT-LARSEN

b. 1906, d. 1994

Wickerwork rattan and cane set comprising sofa and a pair of easy chairs. Made by R. Wengler, 1940s, chairs with brass plaque. Sofa L. 128. (3) DKK 30,000 / € 4,000



840



841

841
BARBRO NILSSON

b. Malmö 1899, d. Höganäs 1983

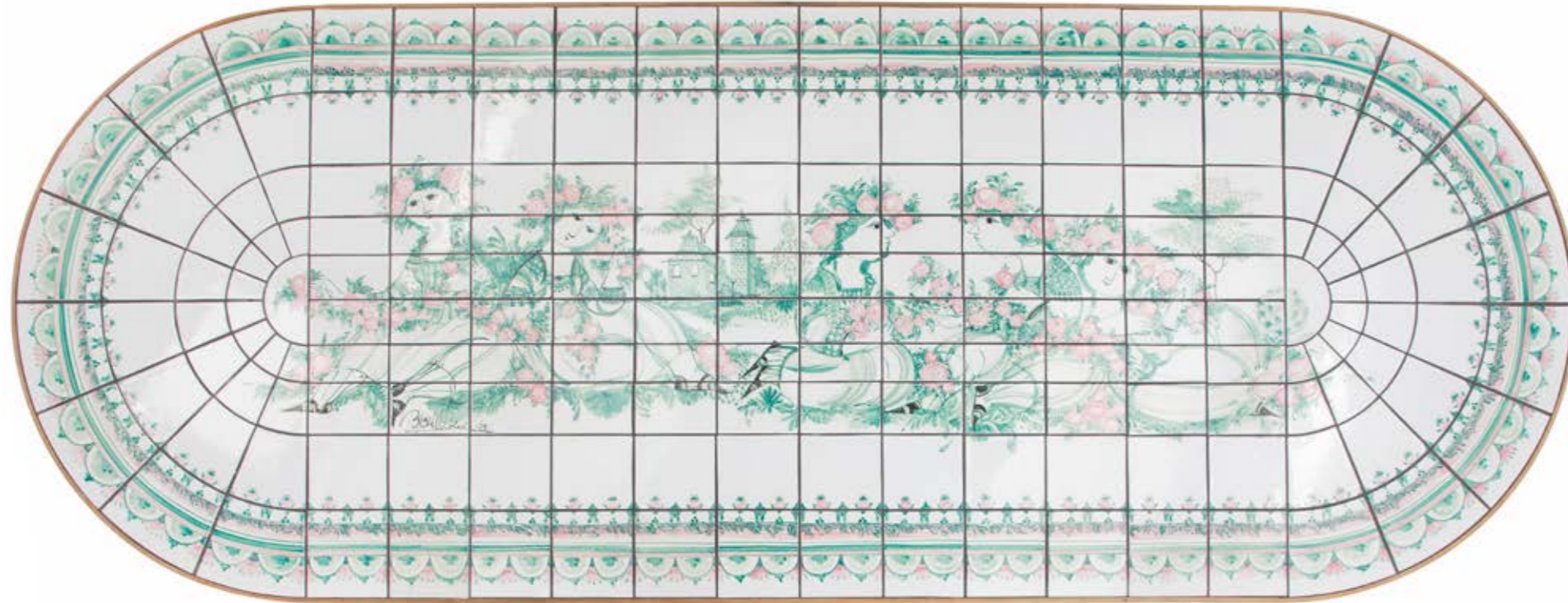
"Röda Rabatten". Handmade circular wool carpet in "knotted pile" technique. Pattern in yellow and beige nuances on red base. Designed 1944. This example made second half of 20th century by AB Märta Måås-Fjetterström, Sweden. Diam. 285 cm.

The round, red "Rabatten" was produced for SKF's offices in Gothenburg, Sweden.

Literature: Tyra Lundgren: "Märta Måås-Fjetterström och väv-verkstaden i Båstad", Stockholm 1968, mentioned p. 115.

Literature: Liljevalchs konsthalls catalogue: "Märta Måås-Fjetterström, Märta flyger igen, 90 år med Märta Måås-Fjetterström", Värnamo 2009, ill. p. 146.

Literature: Viggo Steen Møller: "En bok om Barbro Nilsson", Höganäs 1977, mentioned p. 94. DKK 240,000 / € 32,000



842



842^{ARR}
BJØRN WIINBLAD

b. Copenhagen 1918, d. 2006

Large oak dining table. Top inlaid with numerous ceramic tiles decorated with green and rose glaze on white base. Signed Bjørn Wiinblad 1979. This example made approx. 1979, Denmark. H. 72 cm. L. 316 cm. W. 121 cm.

DKK 20,000–30,000 / € 2,700–4,000



843
FRITZ HANSEN
 Set of 12 teak chairs. Seat upholstered with patinated Niger leather. Made 1930s by Fritz Hansen, stamped. (12)
 DKK 60,000–80,000 / € 8,050–10,500



843

844

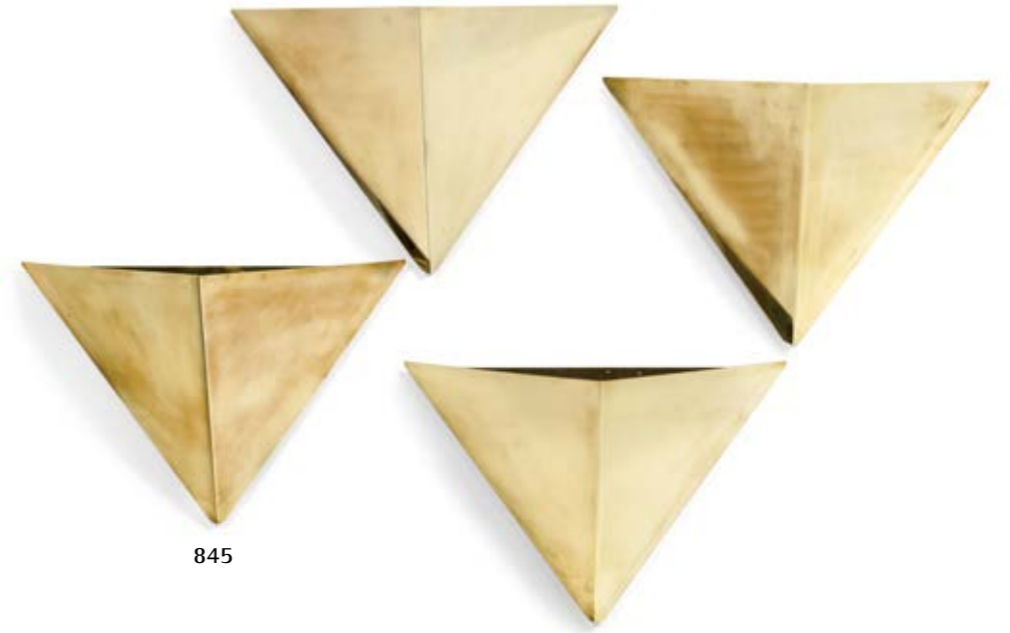
FRITZ HANSEN

Stained beech wingback chair. Seat and back with pleated sea grass. This example manufactured 1940s by Fritz Hansen.

DKK 30,000–40,000 / € 4,000–5,350



844



845

845

SVEND AAGE HOLM SØRENSEN, ATTRIBUTED

b. 1913, d. 2004

Set of four triangular patinated brass up-lights for wall mounting. These examples made approx. 1940-1950s, presumably by Svend Aage Holm Sørensen. H. 39.5 cm. W. 51.5 cm. D. 24.5 cm. (4) *DKK 25,000 / € 3,350*

846

DANISH CABINETMAKER

Large brutalist freestanding patinated oak desk with rounded corners. Front with three integrated drawers. This example made approx. 1930s, Denmark. H. 77 cm. L. 154 cm. W. 101 cm.

DKK 20,000–30,000 / € 2,700–4,000



846



847

847

LOUIS POULSEN

"A-lampetter". A pair of patinated copper Art Deco wall lamps. These examples manufactured 1930-1940s by Louis Poulsen. H. 15 cm. W. 32 cm. (2)

DKK 15,000-20,000 / € 2,000-2,700

848

MOGENS VOLTELEN

b. Sørup, Gulborgsund 1908, d. Gentofte 1995

"Københavnerstolen". Easy chair with curvy, patinated beech frame. Armrests, seat and back with patinated grain leather, fitted with brass nails. Designed 1936. This example made early 1950s by cabinetmaker Niels Vodder, not stamped

Provenance: Acquired early 1950s by present owner's grandfather.

Model presented at The Copenhagen Cabinetmakers' Guild Exhibition at Designmuseum Danmark, 1936.

Literature: Grete Jalk [ed.]: "40 Years of Danish Furniture Design", vol. 1, p. 264.

DKK 25,000-30,000 / € 3,350-4,000



848



849

849

HJALMAR NIELSEN

b. 1892, d.

A mahogany armchair, seat with woven cane. Loose seat cushion upholstered with original patinated Niger leather. This example made 1930-1940s by Rud. Rasmussen cabinetmakers.

Model designed for Ballerup City hall.

DKK 15,000 / € 2,000



850

850

HJALMAR NIELSEN

b. 1892, d.

A mahogany armchair, seat with woven cane. Loose seat cushion upholstered with original patinated Niger leather. This example made 1930-1940s by Rud. Rasmussen cabinetmakers.

Model designed for Ballerup City hall.

DKK 15,000 / € 2,000



851

851

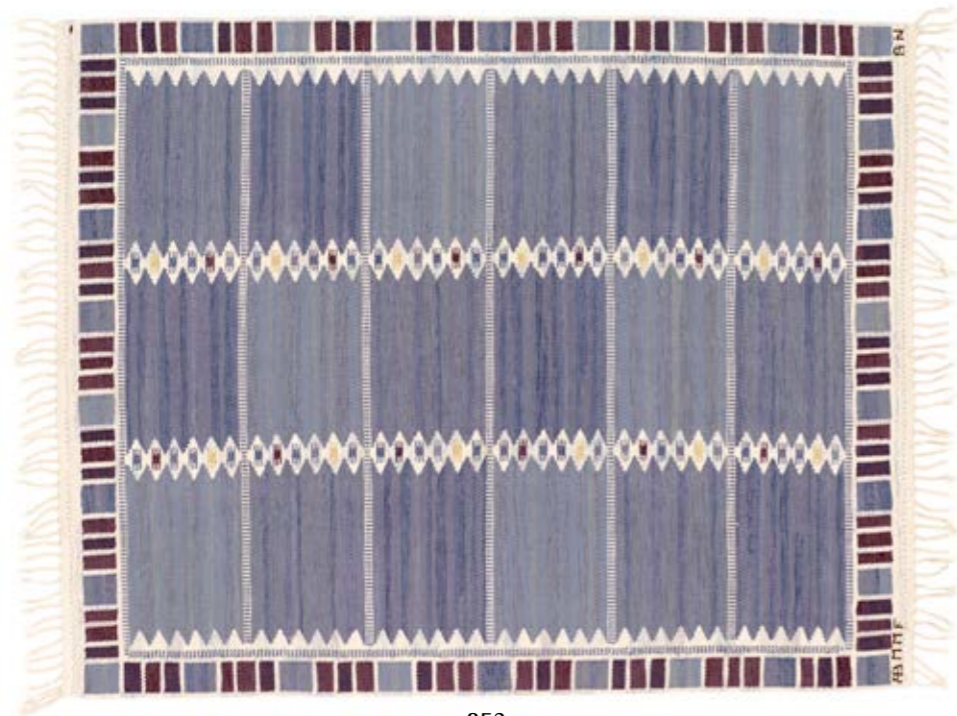
ACTON BJØRN

b. København 1910, d. Charlottenlund 1992

Circular coffee table. Five legged light grey lacquered metal frame with brass "shoes". Red Verona marble top. Designed and made 1940-1950s, Denmark. H. 50 cm. Diam. 126 cm.

Provenance: Acquired by current owner from the family of Acton Bjørn.

DKK 25,000-30,000 / € 3,350-4,000



852

852
BARBRO NILSSON

b. Malmö 1899, d. Höganäs 1983

"Salerno, enkel blå". Handwoven wool carpet in "rölakan" flatweave technique. Geometric pattern in shades of blue on light base. Signed BN and AB MMF. Designed 1952. This example made after 1952 by AB Märta Måås-Fjetterström, Sweden. L. 206 cm. W. 162 cm. *Litterature: Märta Måås-Fjetterström, "Märta flyger igen, 90 år med Märta Måås-Fjetterström", Värnamo 2009, ill. p. 151.*

Litterature: Tyra Lundgren: "Märta Måås-Fjetterström, och väv-verkstaden i Båstad", mentioned p. 115, and ill. fig. 57. DKK 25,000–30,000 / € 3,350–4,000

853
KAARE KLINT

b. Frederiksberg 1888, d. Copenhagen 1954

A mahogany bergère with rosewood inlays, brass "shoes" and castors. Sides, seat and back with woven cane. Loose cushions in seat and back upholstered with patinated Niger leather. Model 4488. Designed 1931. This example made approx. 1930s by Rud. Rasmussen Cabinetmakers.

Litterature: Gorm Harkær, Klintiana: "Kaare Klint", vol. 2, ill. and mentioned p. 86.

Litterature: Grete Jalk [ed.]: "40 Years of Danish Furniture Design", vol. 4, ill. p. 214.

DKK 30,000–40,000 / € 4,000–5,350



853



854

854
KAARE KLINT

b. Frederiksberg 1888, d. Copenhagen 1954

"The Red Chair". Set of 12 mahogany chairs with profiled frame. Seat and back upholstered with patinated cognac coloured Niger leather, fitted with brass nails. Model 3758. Designed 1927. These examples made approx. 1970s by Rud. Rasmussen Cabinetmakers. (12)

Litterature: Gorm Harkær, Klintiana: "Kaare Klint", vol. 2, ill. and mentioned pp. 82–84. DKK 250,000–300,000 / € 33,500–40,000



INDEX

A

Aalto, Alvar	710
Andersen, Just	766
Argy-Rousseau, A. G.	667
Art Nouveau	753

B

Bergström, Hans	714
Bergé, Henri	666, 676, 677, 678, 679
Bernadotte, Sigvard	623, 624
Best, Ty	707
Bjørn, Acton	851
Bojesen, Kay	628
Brandt, Helge	764, 765
Brockmann-Petersen, H.	793
Brøtterup, Jens	792

D

Danish cabinetmaker	754, 846
Danish design	779
Delaherche, Auguste	669
	670, 680, 681
Ditzel, Jørgen	703
Ditzel, Nanna	703, 705

E

Ekström, Yngve	747
----------------	-----

F

Fabricsius, Preben	825
Fisker, Kay	625, 626
Fränkel, Henry	798

G

Gallé, Emile	671, 674, 675
Gottlob, Kaj	795, 838
Griegst, Arje	665

H

Hammerborg, Jo	785
Hansen Jr., Severin	799, 837
Hansen, Fritz	756, 758
	788, 843, 844
Hein, Piet	835
Henningsen, Frits	760, 761, 763
Henningsen, Poul	704, 768, 807
	809, 814, 832
Hiort af Ornäs, Carl-Gustav	751
Holm Sørensen, Svend Aage	845
Holm, Frode	772, 773
Hvidt, Peter	783, 786, 817

I

Italian design	712
Itsu	749

J

Jakobsson, Hans-Agne	805
Jensen, Georg	612, 613
	615, 616, 618
Johansson, Judith	789
Juhl, Finn	721, 723, 724
	725, 726, 727, 730, 731
	804, 810, 811, 812, 813
	815, 816, 818, 819, 820

K

Kastholm, Jørgen	825
Kielland-Brandt, Jacob	717
Kindt-Larsen, Edvard	755, 770, 840
Kindt-Larsen, Tove	770, 771, 840
Kjær, Jacob	782, 794
Kjærholm, Poul	711, 713, 821, 822
	823, 824, 826, 827, 828
	829, 830, 831, 833, 834
Klint, Kaare	769, 800, 802, 853, 854
Koch, Mogens	787, 801
Kofod-Larsen, Ib	718, 719, 720, 734
Koppel, Henning	621, 622
Kristiansen, Bo	651, 652, 653

L

Lassen, Mogens	716
Lauritzen, Vilhelm	839
Lindbom, Ann-Mari	736, 752
Lysberg, Hansen & Therp	757
	759, 784

M

Majorelle, Louis	668
Manz, Bodil	656
Mathsson, Bruno	750
Maurer, Ingo	748
Mogensen, Børge	694, 695, 696
	697, 698, 699, 701, 732
Moos, Peder	808
Måås-Fjetterström, Märta	739
	745, 791, 797
Mølgaard-Nielsen, Orla	780
	781, 786, 817

N

Nancy, Daum	672, 673
Nesci, Jonathan	706
Nichetto, Luca	709

Nielsen, Harald	617, 627, 629
Nielsen, Hjalmar	849, 850
Nielsen, Jais	683
Nilsson, Barbro	729, 841, 852
Norén, Svea	688

P

Pianon, Alessandro	661
Poulsen, Louis	847

Q

Quistgaard, Jens H.	790, 836
---------------------	----------

R

Robsjohn-Gibbins, T. H.	746
Rohde, Johan	614, 619
	620, 630, 767

S

Salto, Axel	631, 632, 633
	634, 635, 636, 637
	638, 639, 640, 641
	642, 643, 644, 645
Sibast, Helge	743
Siesbye, Alev Ebüzziya	646, 647
	648, 649, 650, 657
	658, 659, 660, 662
Stæhr-Nielsen, Eva	682
Suenson, Palle	728
Svensson, Alf	702

U

Unknown designer	708, 715
Utzon, Jørn	742

V

Valentiner, Th.	700, 762
Vasegaard, Gertrud	654, 655
Vodder, Arne	722
Vodder, Niels	803, 806
Voltelen, Mogens	848

W

Walter, Amalric	676
	677, 678, 679
Wanscher, Ole	774, 775, 776
	777, 778, 796
Wegner, Hans J.	684, 685, 686, 687
	689, 690, 691, 692
	693, 733, 735, 737
	738, 740, 741, 744
Weiss, Per	663, 664
Wiinblad, Bjørn	842

Bonhams

CORNETTE de SAINT CYR



Hans Coper, Lucie Rie, Jennifer Lee

Ceramic masterpieces from a private collection

Paris | 6 December 2023



Download Bonhams app
for iOS & Android

CONTACT

Ambre Fioc
ambre.fioc@bonhams.com
bonhams.com

6, avenue Hoche
75008 Paris

Disse købsvilkår udgør Bruun Rasmussen Kunst-auktioner A/S' ("BRK") købsvilkår for traditionelle auktioner og er gældende fra 1. februar 2017. BRK kan til enhver tid ændre købsvilkårene.

Ved bud accepterer budgiver/køber at være bundet af de til enhver tid gældende købsvilkår, som fremgår på bruun-rasmussen.dk. Købsvilkårene gælder både i forhold til erhvervsdrivende og forbrugere.

FØR AUKTIONEN

1 VURDERING AF GENSTANDE

1.1 Alle udbudte genstande er vurderet af BRK. Vurderingen er et skøn over det forventede hammerslag, jf. punkt 5.3. Vurderingen er baseret på tidligere salg af samme type genstande og erfaringer hos BRK. Hammerslag kan derfor falde højere eller lavere ud end vurderingen.

2 BESKRIVELSE AF GENSTANDE

2.1 Udbudte genstande præsenteres med fotos og beskrivelse i kataloger og på bruun-rasmussen.dk. Beskrivelsen foretages efter bedste overbevisning af BRK og ud fra en nøje undersøgelse efter den på salgstidspunktet herskende opfattelse blandt eksperter.

2.2 De udbudte genstande er af en alder og art, der bevirker, at de ofte er behæftede med slitage, mangler, beskadigelser og reparationer. Som udgangspunkt sælges alt som brugte genstande, og derfor indeholder beskrivelsen i kataloget og på bruun-rasmussen.dk ikke en redegørelse for ovenstående punkter eller genstandens stand.

2.3 I visse tilfælde vælger BRK at beskrive en genstands oprindelse. Det sker, hvis en tidligere ejer er offentlig kendt, og/eller hvis historien om et tidligere ejerskab belyser genstanden og dens art. Omvendt sker det også, at sådanne informationer udelades fra beskrivelsen, f.eks. for at imødekomme sælgers ønske om diskretion.

2.4 Vurderingen og beskrivelsen kan blive revideret forud for auktionen. Ændringer offentliggøres på bruun-rasmussen.dk

3 EFTERSYN

3.1 Udbudte genstande udstilles op til auktionen i et show-room hos BRK. Potentielle budgivere opfordres til at se genstanden efter i detaljer og har selv ansvaret for at forvise sig om dens stand på disse eftersyn, hvor der også er mulighed for at rådføre sig hos vurderingssagkyndige.

3.2 Hvis en potentiel køber ikke har mulighed for at besigtige genstanden ved selvsyn, kan der i de fleste tilfælde udfærdiges en konditionsrapport. Beskrivelsen heri er foretaget efter BRK's bedste overbevisning, men er ikke baseret på videnskabelige undersøgelser. En konditionsrapport tjener blot som identifikation og er ment som en hjælp til budgivere, der ikke selv har mulighed for at besigtige genstanden på eftersynet.

UNDER AUKTIONEN

4 BRK'S ROLLE

- 4.1 Salget af en genstand formidles af BRK på vegne af sælger. BRK afhænder altid udbudte genstande til den højst mulige pris under budgivningen.
- 4.2 Udbudte genstande kan have en med sælger aftalt mindstepris, hvorunder den ikke kan sælges. Denne pris er fortrolig.
- 4.3 De traditionelle auktioner overværes af en af Justitsministeriet beskikket auktionsleder, der sikrer, at auktionerne går retmæssigt for sig.

5 BUDGIVNING

- 5.1 Auktionerne afvikles i danske kroner. De tilnærmelsesvis beløb i euro/US dollar vil blive oplyst på skærme i auktionssalen og i øvrigt på opfordring.
- 5.2 Auktionarius bestemmer overbuds størrelse og i hvilket tempo, auktionen afvikles. Overbud stiger normalt med 5 % - 10 % i forhold til det foregående bud. Normalt sælges der 50-100 katalognumre i timen.
- 5.3 Hammerslag betegner både det forhold, at auktionarius slår med hammeren og derved markerer budgivningens afslutning, og den pris (budsum), den udbudte genstand sælges til. Se punkt 7 vedrørende beløb, der tillægges hammerslaget.
- 5.4 Køber er den budgiver, der opnår hammerslag. Ved hammerslaget indgås på baggrund af disse købsvilkår en bindende købs-/salgsaftale.
- 5.5 Bydes på andres vegne, hæfter budgiver som selvskyldnerkautionist for handlen.
- 5.6 Genstande købes som beset, og køber har uanset budtype ingen fortrydelsesret, heller ikke efter forbrugeraftaleloven.
- 5.7 Budgiver skal efter anvisninger fra BRK identificere sig og dokumentere sin betalingsdygtighed, f.eks. ved registrering af gyldigt betalings-/kreditkort, bankgaranti eller indbetaling af depositum.
- 5.8 BRK kan nægte at acceptere et bud, hvis en tilstrækkelig sikkerhed for betaling mangler, eller hvis budgiver tidligere har misligholdt betalingsforpligtigelser ved køb hos BRK.
- 5.9 Auktionslederen træffer i samråd med auktionarius afgørelse i alle tvivlstilfælde omkring budgivningen.

6 BUDTYPER

- 6.1 Der er følgende muligheder for at afgive bud:
 - PERSONLIGT FREMMØDE:**
Registrering og udlevering af bydeskilt foregår ved indgangen til auktionssalen. Når budgiver ønsker at byde, signaleres dette til auktionarius ved at række bydeskiltet i vejret og tydeligt fremvise dets nummer.
 - KOMMISSIONSBUD:**
Det ønskede maksimale bud kan afgives via bruun-rasmussen.dk frem til auktionens start eller pr. e-mail, fax eller telefon, så budet er modtaget senest 24 timer forud for auktionens start. En kommissionær byder på budgivers vegne inden for rammerne af det ønskede maksimalbud og vil altid afgive lavest muligt overbud.
 - TELEFONBUD:**
I forhold til visse genstande er der mulighed for at blive ringet op af en medarbejder fra BRK, der vil byde på budgivers vegne under auktionen. Servicen kan bestilles via bruun-rasmussen.dk indtil tre timer før auktionens start.

LIVE BIDDING:

Det er muligt at følge auktionen live og byde med via bruun-rasmussen.dk

FORAUKTION:

Visse traditionelle auktioner indledes med en net-auktion. De højeste bud på net-auktionen danner udgangspunktet på den efterfølgende traditionelle auktion.

EFTER AUKTIONEN

7 BELØB, DER TILLÆGGES HAMMERSLAGET

- 7.1 I tillæg til hammerslaget, jf. punkt 5.3, skal køber for den enkelte genstand betale købersalær og, hvis betingelserne er opfyldt, de øvrige beløb, der er nærmere beskrevet nedenfor. Det samlede beløb, som køber skal betale til BRK, benævnes "købesummen".
 - 7.1.1 Købersalær: Hammerslaget tillægges et salær til BRK. På de traditionelle auktioner udgør salæret 25,6 % af hammerslaget + moms af salæret, i alt 32 %. For frimærker og mønter udgørsalæret 20 % af hammerslaget + moms af salæret, i alt 25 %.
 - 7.1.2 "LIVE bidding": BRK's "LIVE bidding"-software via bruun-rasmussen.dk er gratis at benytte for budgivere.
 - 7.1.3 Fuldmoms: Visse genstande handles efter de gældende regler om fuldmoms. Her beregnes der moms på 25 % af både hammerslag og salær. Disse genstande er i beskrivelsen i kataloget og på bruun-rasmussen.dk mærket med symbolet "*" eller med teksten: "Dette emne handles i fuldmoms".
 - 7.1.4 Kunstnerafgift: Ifølge dansk lovgivning om ophavsret skal der opkræves kunstnerafgift (følgeretsvederlag) for værker af nyere danske og visse udenlandske kunstnere, som enten er nulevende eller ikke har været døde i mere end 70 år. Kunstnerafgiften opkræves på vegne af VISDA. Disse værker er i kataloget mærket med "ARR" (Artist's Resale Right) og på bruun-rasmussen.dk med teksten "Dette emne er belagt med kunstnerafgift". Kunstnerafgiften tillægges hele hammerslaget + salær (ekskl. moms), når beløbet overstiger 300 euro, som angivet nedenfor:

Hammerslag + salær (ekskl. moms)	Betalingsssats
300,01 - 50.000 euro	5%
50.000,01 - 200.000 euro	3%
200.000,01 - 350.000 euro	1%
350.000,01 - 500.000 euro	0.5%
over 500.000 euro	0.25%

Kunstnerafgiften kan ikke overstige 12.500 euro (ekskl. moms) for den enkelte genstand. Afgiften skal betales i danske kroner, og omregningskursen (EUR/DKK) fastsættes af VISDA.

- 7.1.5 Betalings-/kreditkortgebyr: BRK forbeholder sig ret til at opkræve de af indløsningselskaberne pålagte betalings-/kreditkortgebyrer. Satserne fremgår ved budgivning via bruun-rasmussen.dk og ved betaling.

8 BETALINGSFRIST

- 8.1 Købesummen forfalder til betaling ved hammerslaget, og køber har herefter otte dage til at betale købesummen til BRK.

9 BETALINGSMÅDER

- 9.1 Betaling kan ske på følgende måder:
 - A: Med betalings-/kreditkort (Dankort, Visa, MasterCard, Maestro, Diners Club, JCB og China UnionPay) eller kontant (op til 19.999 kr.) i auktionssalen eller efterfølgende i en afdeling hos BRK. Bemærk, at vi ikke modtager 500-eurosedler.

B: Med betalings-/kreditkort (Dankort, Visa, MasterCard, Maestro, Diners Club og JCB) på bruun-rasmussen.dk under købers personlige side.

C: Via bankoverførsel til BRK's konto i Danske Bank: 4183 4310970638 · Swift/BIC: DABADKKK · IBAN: DK4130004310970638.

10 MOMSFRITAGELSE, -BETALING OG -DEPONERING

- 10.1 Visse købere kan vælge hvilken momstype, der skal være gældende for handlen. Valget skal meddeles BRK senest to hverdage efter købet og kan ikke omgøres.
 - A: Momsregistrerede virksomheder i Danmark kan vælge, at handlen skal ske efter reglerne om fuldmoms, jf. punkt 7.1.3.
 - B: Momsregistrerede virksomheder i et andet EU-land kan fritages for dansk moms, når det kan dokumenteres, at genstanden er transporteret til den udenlandske adresse, som køber har oplyst over for BRK, og som er anført på fakturaen. I sådanne tilfælde skal der afregnes moms efter de gældende regler i det land, hvor køber er momsregistreret. Det tilrådes at søge oplysning hos de lokale myndigheder. Køber kan undlade at gøre brug af muligheden for momsfrigtagelse og i stedet betale dansk brugtmoms/fuldmoms.
 - C: Købere med bopæl uden for EU kan fritages for dansk moms, når det kan dokumenteres, at genstanden er transporteret ud af EU. BRK udsteder så vidt muligt og mod gebyr de fornødne eksportpapirer, som skal fremvises ved toldmyndighederne. Køber kan undlade at gøre brug af muligheden for momsfrigtagelse og i stedet betale dansk brugtmoms/fuldmoms.
- 10.2 Momsregistrerede virksomheder i et andet EU-land og købere med bopæl uden for EU skal deponere den danske moms af fakturabeløbet hos BRK, indtil eksporten er gennemført på dokumenteret lovligt vis. Foretages eksporten af en af BRK godkendt speditor, skal momsens ikke deponeres. Se listen over godkendte speditorer på bruun-rasmussen.dk

11 OVERSKRIDELSE AF BETALINGSFRIST

- 11.1 Overskrides en betalingsfrist, herunder fristen i punkt 8, opkræves morarenter, som beregnes efter Nationalbankens officielle udlånsrente + 8 % om året af det skyldige beløb.
- 11.2 Betales købesummen inkl. renter ikke senest ti dage efter, at der er fremsat påkrav herom, er BRK berettiget til at søge købesummen betalt ved modregning i depositum/ved træk på bankgaranti eller at hæve købet.
- 11.3 Hæves købet, er BRK berettiget til at sælge genstanden på en ny auktion og kræve omkostningerne og en eventuel difference mellem hammerslag (samt salær), der er opnået på de to auktioner, betalt af den misligholdende køber.
- 11.4 Alle forfaldne krav (inkl. omkostninger), som ikke betaales rettidigt, kan BRK i tillæg til inkasso søge inddrevet på følgende måder:
 - A: For købers regning sælge genstande indleveret til auktion af eller på vegne af køber. Salget kan gennemføres uden hensyntagen til en aftalt mindstepris. Genstande indleveret til auktion kan ikke kræves udleveret, så længe forfalden gæld henstår ubetalt.
 - B: Inddrage købers tilgodehavende hos BRK, herunder tilgodehavende fra salg af genstande indleveret af eller på vegne af køber, uanset om et sådant tilgodehavende stammer fra auktionssalg, som ligger forud for eller efter tidspunktet for købers misligholdelse.

12 AFHENTNING OG UDLEVERING

- 12.1 Ejendomsretten til en købt genstand overgår til køber, når hele købesummen inkl. eventuelle renter og gebyrer er betalt, og først herefter kan udlevering af genstanden finde sted.
- 12.2 Ved udlevering af en købt genstand forbeholder BRK sig retten til at kræve tilfredsstillende dokumentation for, at den person, som ønsker genstanden udleveret, enten selv er køberen eller er bemyndiget af køberen til at få genstanden udleveret.
- 12.3 Udlevering af visse våben kræver forevisning af gyldig våbentilladelse. Sådant krav er angivet med teksten "Køb af dette emne kræver forevisning af gyldig våbentilladelse" i kataloget og på bruun-rasmussen.dk
- 12.4 Købte genstande henligger fra hammerslaget for købers regning og risiko. Afhentning skal ske senest otte hverdage efter sidste auktionsdag.
- 12.5 Foretages afhentningen ikke rettidigt, transporteres de købte genstande til et lager for købers regning og risiko. Transporten koster 150 kr. inkl. moms pr. genstand, og opbevaringen koster 150 kr. inkl. moms pr. genstand pr. påbegyndt uge. Henligger en genstand uafhængt i så lang tid, at lagerlejen overstiger genstandens værdi, er BRK berettiget til for købers regning og risiko og uden hensyn til mindstepris at bortauktionere genstanden eller sælge den underhånden. Køber hæfter til transport og lagerleje, der ikke dækkes ved sådant salg.
- 12.6 I henhold til gældende hvidvasklovgivning skal køber i visse tilfælde udlevere identitetsoplysninger og fremvise billed-id til BRK, før køber kan få den købte genstand i sin besiddelse

13 FORSENDELSE

- 13.1 Er køber forhindret i selv at afhente en genstand, tilbyder BRK for købers regning og risiko at emballere og arrangere forsendelse enten med post eller speditør. Se punkt 12.2 angående legitimation.

14 EKSPORTTILLADELSE

- 14.1 For at sikre at dansk kulturarv af afgørende betydning forbliver i Danmark, kan Kulturværtdiudvalget for visse genstandes vedkommende nedlægge eksportforbud. Hvis køber ønsker at eksportere en genstand ud af Danmark, hvor der er nedlagt et eksportforbud, annulleres købet, og Kulturværtdiudvalget er forpligtet til at overtage genstanden til den pris, der blev opnået på auktionen. Køber kan ikke rejse krav mod BRK som følge af, at et eksportforbud bliver nedlagt.
- 14.2 Visse genstande er omfattet af Washingtonkonventionen, også kendt som CITES, der har til formål at stoppe ulovlig handel med genstande fremstillet af udryddelsestruede vilde dyr og planter. Såfremt en genstand er omfattet af Washingtonkonventionen, CITES, liste 1, vil det fremgå af beskrivelsen på bruun-rasmussen.dk og være markeret med symbolet "©" i kataloget. Følgende regler gør sig gældende:
- A: Genstande omfattet af Washingtonkonventionen, CITES, liste 1, må kun handles, når der foreligger en dispensation i form af et såkaldt CITES-salgscertifikat. BRK indhenter det fornødne certifikat fra Naturstyrelsen, der tillader handel og eksport til lande inden for EU. Dog kan genstande, som er færdigforarbejdet før 1947, frit handles inden for EU uden et certifikat.
- B: Det er alene genstande omfattet af Washingtonkonventionen, CITES, liste 1, som er særkilt markeret på bruun-rasmussen.dk og i kataloget. Genstande omfattet af Washingtonkonventionen, CITES, liste 2, der frit kan sælges og transporteres inden for EU, er ikke særkilt markeret.
- C: Ved eksport til lande uden for EU skal der uanset årstallet for genstandens færdigforarbejdning altid indhentes en CITES-reeksporttilladelse fra Naturstyrelsen,

når genstanden er omfattet af Washingtonkonventionen, CITES, liste 1 og 2. Denne eksporttilladelse kan normalt indhentes problemfrit, når liste 1-genstande enten er solgt med et CITES-salgscertifikat eller er færdigforarbejdet før 1947. Liste 2-genstande opnår ligeledes normalt problemfrit en reeksporttilladelse. Eventuelle omkostninger, der opkræves af de danske myndigheder i forbindelse med udstedelse af en reeksporttilladelse, vil blive pålagt købers faktura.

D: I forbindelse med eksport til lande uden for EU kan særlige regler gøre sig gældende ifm. den efterfølgende import, og køber opfordres til at indhente oplysninger fra egne myndigheder.

15 MANGLER VED KØBTE GENSTANDE

- 15.1 Købelovens mangelsregler kan finde anvendelse. Nedenfor er angivet et ikke udtømmende uddrag af købers mangelsbeføjelser.
- 15.2 Køber er berettiget til at annullere et køb, hvis beskrivelsen har været behæftet med væsentlige fejl, der har ført til et højere hammerslag, end en korrekt beskrivelse ville have resulteret i. I sådanne tilfælde vil den samlede købesum blive refunderet. Køber kan ikke kræve betaling af renter af købesummen eller kræve dækning af anden udgift eller tab.
- 15.3 Et køb kan ikke annulleres, og køber kan ikke kræve købesummen refunderet eller rejse noget andet krav mod BRK, hvis beskrivelsen af genstanden er i overensstemmelse med punkt 2, eller hvis en påvisning af falskneri havde krævet brug af videnskabelige metoder, der enten ikke var tilgængelige på salgstidspunktet, havde været uforholdsmæssigt omkostningskrævende at anvende eller havde ført til beskadigelse af den pågældende genstand.
- 15.4 Krav om annullering af et køb skal meddeles BRK, når køber er blevet bekendt med det forhold, der berettiger køber til at annullere købet, dog senest to år fra den seneste afhentningsdato efter punkt 12.4. Den købte genstand skal returneres til BRK i samme stand som på hammerslagstidspunktet. Overholdes disse betingelser ikke, mister køber retten til at annullere købet og kan ikke kræve købesummen refunderet. Køber er selv ansvarlig for at betale de omkostninger, der er forbundet med returnering af genstanden.

16 INDSIGELSE- OG ANSVARSBEGRÆNSNING

- 16.1 BRK tager forbehold for fejl, tekniske vanskeligheder samt udefrakommende misbrug eller forstyrrende påvirkning under auktionen. Budgetgiver kan ikke rejse noget krav mod BRK som følge heraf.
- 16.2 Køber er i alle tilfælde selv ansvarlig for korrekt betaling af moms og andre afgifter, gebyrer mv. i overensstemmelse med danske og udenlandske regler.
- 16.3 Medmindre andet fremgår af disse købsvilkår, kan BRK aldrig blive ansvarlig for budgetgivers/købers driftstab, avancetab, andre indirekte tab eller følgeskader.

17 PERSONDATAPOLITIK

- 17.1 Det er vigtigt for BRK at sikre fortrolighed og sikkerhed omkring budgetgivers/købers personlige oplysninger. Persondatapolitikken fremgår af bruun-rasmussen.dk.

18 KLAGE, TVISTLØSNING OG LOVVALG

- 18.1 Har budgetgiver/køber en klage, kan der altid rettes henvendelse til BRK.
- 18.2 Lykkes det ikke at finde en løsning, kan forbrugere sende en klage til Nævnenes Hus, Toldboden 2, 8800 Viborg, e-mail: naevneneshus.dk. Forbrugere med bopæl i et andet EU-land end Danmark kan klage til EU-Kommissionens online klageportal via hjemmesiden: <http://ec.europa.eu/odr>.
- 18.3 Tvister skal indbringes i Danmark ved Københavns Byret, jf. dog punkt 18.2. I forbrugerforhold gælder de ufravigelige værnetingsregler.

Bruun Rasmussen Kunstauktioner

Rev. 06.23

CONDITIONS OF PURCHASE – LIVE AUCTIONS

These conditions of purchase represent Bruun Rasmussen Kunstauktioner A/S' ("BRK") conditions of purchase for live auctions and are effective from 1 January 2017. BRK may modify the conditions of purchase at any time.

By bidding, the bidder/buyer accepts the current conditions of purchase as they appear on bruun-rasmussen.dk. The conditions of purchase are applicable to both business owners and consumers.

BEFORE THE AUCTION

1 VALUATION OF ITEMS

- 1.1 All the offered items are valued by BRK. The valuation is an estimate based on the expected hammer price, see paragraph 5.3. The estimate is based on the previous sale of similar items as well as BRK's past experience. The hammer price can therefore be higher or lower than the estimated price.

2 DESCRIPTION OF ITEMS

- 2.1 Items up for auction are presented with photographs and descriptions in catalogues and on bruun-rasmussen.dk. The description is worded according to the best of BRK's knowledge and based on detailed research in accordance with the prevailing views among experts at the time of sale.
- 2.2 The items up for auction are of an age and nature that often mean that they are in a worn, repaired or damaged condition. As a starting point everything is sold as used items. For this reason, the descriptions in the catalogue or at bruun-rasmussen.dk do not include a statement regarding the above or the condition of the item.
- 2.3 In some cases, BRK may choose to describe an item's provenance. Such a description is made if a former owner is publicly known and/or if the story of previous ownership sheds further light on the item and its background. In other cases, such information is left out of the description, for instance to meet the seller's wish for privacy.
- 2.4 It is possible that the estimate and description are revised prior to the auction. Changes are published on BRK's website.

3 PREVIEW

- 3.1 Items up for auction are presented prior to the auction in one of BRK's showrooms. Potential bidders are encouraged to inspect the items closely and are responsible for determining the condition of the items at these previews, where they also have the opportunity to consult with the valuation experts.
- 3.2 If a potential buyer does not have the opportunity to inspect the item personally, a condition report can be drafted in most cases. The description in this report has been made according to BRK's honest conviction but is not based on scientific studies. A condition report only serves as an identification and is meant as an aid to bidders who do not have the opportunity to inspect the item at the preview.

DURING THE AUCTION

4 THE ROLE OF BRK

- 4.1 The sale of an item is facilitated by BRK on behalf of the seller, and BRK always sells items up for auction at the highest price offered during the bidding round.

- 4.2 Items up for auction can have a reserve price that has been agreed upon with the seller. The price is confidential and the item cannot be sold below this price.
- 4.3 The live auctions are presided over by one of the Danish Ministry of Justice's appointed auctioneers, ensuring that the auctions proceed correctly and lawfully.

5 BIDDING

- 5.1 The currency used while the auctions take place is Danish kroner. The approximate amount in euro/US dollars is shown on screens in the saleroom and also on request.
- 5.2 The auctioneer determines the size of the bid increment and the pace of the auction. Bid increments usually rise by 5% - 10% compared to the previous bid. Approximately 50-100 auction lots are sold per hour.
- 5.3 The hammer price refers both to the gavel used by the auctioneer that signifies the end of a bidding round on an item and to the price (bidding amount) that the item up for auction is sold for. See paragraph 7 regarding amounts added to the hammer price.
- 5.4 The buyer is the bidder that submits the highest bid, thereby obtaining the hammer price. At the moment the hammer price is determined, a binding purchase/sale agreement is entered into based on these conditions of purchase.
- 5.5 If bids are made on behalf of others, the bidder serves as surety for the transaction.
- 5.6 Items are purchased in their present state and condition, and regardless of the type of bidding the buyer has no right to cancel his purchase, neither under the Danish Consumer Contracts Act.
- 5.7 Bidders are required, in accordance with BRK's instructions, to identify themselves and document their ability to pay, for instance by registration of a valid debit/credit card, bank guarantee or a deposit.
- 5.8 BRK may refuse to accept a bid if a sufficient guarantee of the bidder's ability to pay is not provided, or if the bidder has previously defaulted on payment obligations on purchases from BRK.
- 5.9 The overseeing auctioneer will, in consultation with the auctioneer at the podium, decide what to do in matters of dispute concerning a bidding round.

6 TYPES OF BIDDING

- 6.1 Bidding options:
- IN PERSON:**
Registration and obtaining the bidding paddle take place at the entrance to the saleroom. When the bidder wishes to bid, it is signalled to the auctioneer on the podium by raising the bidding paddle in the air and clearly displaying its number.
- COMMISSION BIDS:**
The intended maximum bid can be submitted via bruun-rasmussen.dk until the start of the auction or by e-mail, fax or phone, so that the bid is received no later than 24 hours prior to the start of the auction. A commission agent bids on behalf of the bidder within the limits of the stated maximum bid. The commission agent will always bid the lowest possible amount to achieve the hammer price.

TELEPHONE BID:

With certain items it is possible to have a BRK employee call the bidder over the phone. The employee will then bid on behalf of the bidder during the auction. The service can be booked via bruun-rasmussen.dk up until three hours before the auction is set to begin.

LIVE BIDDING:

It is possible to follow the auction live and bid on the auction lots via bruun-rasmussen.dk.

PRE-AUCTION:

Some live auctions are preceded by an online auction. The highest bids from the online auction then represent the starting bids at the following live auction.

AFTER THE AUCTION

7 AMOUNTS ADDED TO THE HAMMER PRICE

- 7.1 In addition to the hammer price, see paragraph 5.3, the buyer pays a buyer's premium for the individual items as well as the other amounts described below if the conditions for these are applicable. The total amount that the buyer pays to BRK is called the "purchase price".
- 7.1.1 Buyer's Premium: The hammer price always includes an additional fee to BRK. At the live auctions, the fee is 25,60% of the hammer price + VAT of the fee, 32% in total. For stamps and coins, the fee is 20% of the hammer price + VAT of the fee, a total of 25%.
- 7.1.2 "LIVE Bidding": BRK's "LIVE Bidding" software is free to use for bidders on bruun-rasmussen.dk.
- 7.1.3 Full VAT: Certain items are sold at auction in accordance with the current rules regarding full VAT. In such a situation, a VAT of 25% is imposed on both the hammer price and the buyer's premium. These items are marked in the catalogue and on bruun-rasmussen.dk with the symbol "***", or with the text: "This item is subject to full VAT".
- 7.1.4 Artist's Resale Right: In accordance with Danish copyright law, a royalty fee covering the Artist's Resale Right has to be charged for works by newer Danish artists, and some foreign artists, who are either alive or have not been dead for more than 70 years. The royalty fee covering the Artist's Resale Right is charged on behalf of VISDA (Visual Rights Denmark). These works are marked "ARR" in the printed catalogue, and on bruun-rasmussen.dk the description of the works includes the text: "This lot is subject to the Artist's Resale Right". The royalty fee covering the Artist's Resale Right is added to the hammer price + the buyer's premium (excluding VAT) if the amount exceeds EUR 300, as indicated below:

Hammer price + buyer's premium (ex. VAT)	Payment Rate
300,01 - 50,000 euro	5%
50,000,01 - 200,000 euro	3%
200,000,01 - 350,000 euro	1%
350,000,01 - 500,000 euro	0.5%
over 500,000 euro	0.25%

The royalty fee covering the Artist's Resale Right cannot exceed EUR 12,500 (excluding VAT) for each item. The fee must be paid in Danish kroner, and the conversion rate (EUR/DKK) is set by VISDA.

- 7.1.5 Debit/Credit Card Fee: Amounts Added to the Hammer Price: BRK reserves the right to charge the debit/credit card fees imposed by the payment services companies. The rates will appear when bidding on bruun-rasmussen.dk and at payment.

8 PAYMENT DEADLINE

- 8.1 The purchase price falls due after the hammer price has been determined, and then the buyer has eight days to pay BRK the purchase price.

9 PAYMENT METHODS

- 9.1 The payment can be made in the following ways:
- A: With debit/credit card (Visa, MasterCard, Maestro, Diners Club, China UnionPay and JCB) or cash (up to DKK 19.999) in the saleroom or subsequently at one of

BRK's locations. Please note that we do not accept EUR 500 banknotes.

- B: With debit/credit card (Dankort, Visa, MasterCard, Diners Club and JCB) via BRK's website on the buyer's personal page.
- C: By bank transfer into BRK's account with Danske Bank: 4183 4310970638 · Swift/BIC: DABADKKK · IBAN: DK4130004310970638.

10 VAT EXEMPTION, PAYMENT & DEPOSIT

- 10.1 Some buyers can choose which type of VAT should apply to the transaction. The choice has to be communicated to BRK no later than two working days after the purchase and cannot be changed subsequently.
- A: Businesses in Denmark registered for VAT can decide that the transaction is to be conducted in accordance with the rules for full VAT, see paragraph 7.1.3.
- B: Businesses registered for VAT in another EU Member State can be exempted from paying Danish VAT if it can be proved that the item has been transported to the foreign address that the buyer has registered with BRK and which is written on the invoice. In such cases, the VAT should be settled according to the rules applicable in the country where the buyer is registered for VAT. It is advisable to consult with the local authorities. The buyer can decide not to be exempt from regular VAT and instead pay Danish VAT on second-hand goods/full VAT.
- C: Buyers residing outside the EU can be exempted from Danish VAT if it can be proved that the item has been transported out of the EU. To the extent possible and for a fee, BRK can issue the necessary export documents for the customs authorities. The buyer may decide not to be exempt from regular VAT and instead pay Danish VAT on second-hand goods/full VAT.
- 10.2 Companies registered for VAT in another EU Member State and buyers residing outside the EU must deposit the Danish VAT on the amount invoiced with BRK until the export process has been completed in a documented, lawful fashion. If the export is undertaken by one of BRK's authorized forwarding agents, the VAT does not have to be deposited. See the list of authorized forwarding agents on bruun-rasmussen.dk.

11 OVERDUE PAYMENTS

- 11.1 If payment is made after a deadline, including the deadline specified in paragraph 8, interest on overdue payments will be charged and estimated in accordance with the Danish Central Bank's official lending rate + 8% per year on the amount due.
- 11.2 If the purchase price, including interest, has still not been paid ten days after the demand for payment has been made, BRK is entitled to seek the purchase price paid by making a set-off against the deposit/by drawing on the bank guarantee or to cancel the purchase.
- 11.3 If the purchase is cancelled, BRK is entitled to sell the item at a new auction and demand the costs and any difference between the new and the earlier hammer price (including the buyer's premium) covered by the defaulting buyer.
- 11.4 In addition to debt collection, BRK may seek recovery of all due claims (including costs) not paid in a timely manner in the following ways:
- A: Making the buyer cover the costs of selling items consigned to auction by or on behalf of the buyer. The sale can be conducted without regard to an agreed reserve price. Items consigned for auction cannot be collected as long as overdue debts are unpaid.
- B: Seizing the buyer's remaining balance with BRK, including the balance from the sale of items consigned by or on behalf of the buyer, regardless of whether such receivables derive from auction sales prior to or after the date of the buyer's default on the payment.

12 PICK-UP & COLLECTION

- 12.1 The title to a purchased item passes to the buyer when the full purchase price, including any interest and fees, has been paid, and only then can the collection of an item take place.
- 12.2 In connection with the collection of a purchased item, BRK reserves the right to demand satisfactory documentation that the person who wants to pick up the item is either the buyer himself/herself or authorized by the buyer to receive the item on his/her behalf.
- 12.3 The collection of certain weapons requires presentation of a valid weapons certificate. Items with such requirements are listed with the text: "The purchase of this item requires the presentation of a valid weapons certificate" in the catalogue and on bruun-rasmussen.dk.
- 12.4 Purchased items are stored after the auction at the buyer's expense and risk. Pick-up must take place no later than eight working days after the last auction day.
- 12.5 If the item(s) is/are not picked up on time, the purchased items will be transported to a warehouse at the buyer's risk and expense. The transport costs are DKK 150 including VAT per item and the storage costs are DKK 150 including VAT per item for each week or part of a week. If an item is left unclaimed for an amount of time that results in the storage costs exceeding the value of the item, BRK will be entitled to, at the buyer's expense and risk and without regard to the reserve price, sell the item at an auction or privately. The buyer is still liable for the costs of transportation and storage not covered by such sale.
- 12.6 In accordance with current anti-money laundering laws, the buyer must in certain cases submit personal information and present a photo ID to BRK before the buyer can have the purchased item placed in his possession.

13 SHIPPING

- 13.1 If the buyer is unable to pick up the purchased item, BRK offers to pack and arrange delivery either by mail or by freight forwarder at the buyer's risk and expense. See paragraph 12.2 regarding identification.

14 EXPORT LICENSE

- 14.1 To ensure that Danish cultural heritage of vital importance remains in Denmark, the Danish Cultural Assets Commission can place an export ban on certain items. If the buyer wishes to export an item that is subject to an export ban in Denmark, the purchase will be cancelled and the Danish Cultural Assets Commission is obliged to acquire ownership of the item for the price obtained at auction. The buyer cannot raise any claims against BRK as a result of an export ban.
- 14.2 Certain items are included in the Washington Convention, also known as CITES. The purpose of CITES is to stop the trade of items made with endangered species and flora. If the item is included in the Washington Convention, CITES, Appendix 1, this will appear in the description of the item on bruun-rasmussen.dk and be marked with the symbol "☉" in the catalogue. The following rules are applicable:
- A: Items that are included in the Washington Convention, CITES, Appendix 1, can only be traded when a dispensation in the form of a CITES certificate has been obtained. BRK obtains the required certificate from the Danish Nature Agency that allows trade and export to countries within the EU. Items that were produced before 1947 can, however, be freely traded within the EU without a certificate.
- B: It is only items included in the Washington Convention, CITES, Appendix 1 that are marked individually on bruun-rasmussen.dk and in our catalogue. Items included in the Washington Convention, CITES, Appendix 2, which can be freely sold and transported within the EU, are not individually marked.
- C: Export to countries outside the EU must, regardless of the year of the item's production, always procure a CITES re-export permit from the Danish Nature Agency if the item is included in the Washington Convention, Appendix 1 and 2. This export permit can usually be

obtained without problems, if the item is either sold with a CITES certificate or was made prior to 1947. Appendix 2 items usually also receive a re-export permit without problems. Any fees charged by the Danish authorities in connection with the issuance of a re-export permit will be added to the buyer's invoice.

D: In connection with export to other countries outside the EU, special rules may apply concerning the subsequent import, and the buyer is encouraged to consult the relevant local authorities about this issue.

15 DEFECTS IN THE PURCHASED ITEMS

- 15.1 The lack of conformity rules of the Danish Sale of Goods Act may apply. Below is a non-exhaustive excerpt of the buyer's remedies in regard to lack of conformity.
- 15.2 The buyer is entitled to cancel a purchase if the description contained significant errors that have led to a higher hammer price than a correct description would have resulted in. In such cases, the total purchase price will be refunded. The buyer cannot demand payment of interest on the purchase price or demand payment of any other expenses or losses.
- 15.3 A purchase cannot be cancelled and the buyer cannot demand a refund of the purchase price or raise any other claims against BRK if the description of the item is in compliance with paragraph 15.2. The same applies if evidence of forgery has required the use of scientific methods that were either not available at the time of sale, were excessively costly to use or led to the damage of the item in question.
- 15.4 Claims for a cancellation of a purchase must be notified to BRK when the buyer has discovered the fact that entitles the buyer to cancel the purchase. This notice, however, has to be given no later than two years after the final pick-up date according to paragraph 12.4. The item purchased must be returned to BRK in the same condition as it was on the day it was sold at auction. If these conditions are not met, the buyer loses the right to cancel the purchase and cannot claim a refund of the purchase price. The buyer is responsible for paying the costs associated with the return of the item.

16 OBJECTIONS & LIMITATIONS OF LIABILITY

- 16.1 BRK is aware that errors, technical difficulties and external abuse or disruptive influences may occur during the auction. Bidders cannot raise any claims against BRK as a result of such events.
- 16.2 The buyer is always responsible for the correct payment of VAT and other costs, fees etc. in accordance with Danish and foreign regulations.
- 16.3 Unless otherwise stated in these conditions of purchase, BRK may never be held liable for bidders'/buyers' operating loss, loss of profits, other indirect losses or consequential loss.

17 PRIVACY POLICY

- 17.1 It is important to BRK to ensure confidentiality and security regarding the bidder's/buyer's personal information. The privacy policy can be found on bruun-rasmussen.dk.

18 COMPLAINTS, DISPUTE RESOLUTION AND APPLICABLE LAW

- 18.1 BRK can always be contacted if the bidder/buyer has a complaint.
- 18.2 If the dispute cannot be resolved, the consumer can submit a complaint to the Complaint Resolution Centre, Nævnenes Hus, Toldboden 2, 8800 Viborg, Denmark, email: naevne-neshus.dk. Consumers residing in another EU country than Denmark can submit their complaint to the European Commission's Online Dispute Resolution platform via the website: <http://ec.europa.eu/odr>.
- 18.3 In Denmark, disputes must be brought before the City Court of Copenhagen, but see paragraphs 18.2. The mandatory rules on jurisdiction apply to consumer interests.

Bruun Rasmussen Auctioneers

The above is an English translation of the Danish version of the Conditions of Purchase. In case of a dispute, only the Danish version of the present Conditions of Purchase of Bruun Rasmussen is valid.

COMMISSION BIDS

KOMMISSIONSBUD

It is possible to leave commission bids if you can not be present at the auction yourself. This service is free of charge.

When leaving a commission bid, you are instructing our customer service to bid up to a specified amount on your behalf.

The situation can occur that another buyer has already bid the same as you were prepared to. Are you then willing to bid further? If not the lot will be sold to another buyer.

If you do not wish to exceed your bid then write "Max", for maximum, next to the amount. You can also allow us to raise your bid by approx. 15% or approx. 25%.

The hammer price may be higher or lower than the estimated price, so it is possible to buy below the estimate. Bruun Rasmussen will always buy at the lowest price possible, as if you yourself had been present at the auction.

All commission bids are strictly confidential.

Commission bids must be submitted no later than **24 hours** prior to the start of the auction.

HOW TO MAKE A COMMISSION BID:

Complete the commission form with all pertinent information.

Indicate the lot number.

Indicate the amount you are prepared to bid.

Should this amount be the absolute maximum, please write "Max" in the appropriate column.

You can also allow us to bid by up to approx. 15% or approx. 25% more by indicating so.

Sign the commission form and make sure that Bruun Rasmussen receives it **24 hours** prior to the start of the auction.

If the information should be insufficient, Bruun Rasmussen can abstain from bidding. Bruun Rasmussen can not be held responsible for error in bidding or failure to execute bids.

INTERNET:

Commission bids can be submitted via website bruun-rasmussen.dk directly from the page with the item you want to submit a bid for.

Deadline for submissions of bids via the website is **3 hours** prior to the start of the auction.

Submitted bids are shown under "Your bids" when you are logged in. Please contact technical support on +45 8818 1114 for questions about the registration and submission of bids on the website.

For additional information, please consult "Conditions of Purchase" §1.

TELEPHONE BIDDING:

Should you wish to bid at auction by telephone, please inform Bruun Rasmussen of your name and telephone number, as well as which catalogue numbers you are interested in, no later than **3 hours** prior to the start of the auction. You will then be contacted shortly before the relevant lot comes under the hammer, thereby allowing you to participate without being in the auction room yourself.

For additional information, please consult "Conditions of Purchase" §1.

Det er muligt at afgive kommissionsbud, hvis De ikke selv kan være til stede på auktionens dag. Denne service er gratis.

Når De afgiver en kommission, beder De vores kundeservice på Deres vegne byde op til et af Dem bestemt beløb i hammerslag.

Der kan opstå den situation, at en anden køber allerede har budt det beløb, som De ønsker at afgive. Er De da villig til at gå et bud højere eller er De indforstået med at nummeret sælges til anden side?

Ønsker De ikke at byde højere så skriv "Max" ud for beløbet. Er De i tvivl om hvor højt De vil byde, kan De hæve budet med op til ca. 15% eller ca. 25%.

Salgsprisen kan blive højere eller lavere end vurderingen, så der er også mulighed for at købe til under den angivne vurdering. Vor kundeservice køber altid så billigt som muligt til Dem, som havde De selv været tilstede på auktionen.

Alle kommissioner behandles strengt fortroligt.

Kommissionsbud skal være Bruun Rasmussen i hænde senest **24 timer** før auktionens start.

SÅDAN BYDER DE:

Udfyld blanketten kommissionsbud med alle oplysninger.

Angiv katalognummer.

Angiv beløbet De ønsker at byde.

Er dette Deres absolutte maximum bedes De anføre "Max" i kolonnen.

De kan også forhøje Deres bud med henholdsvis ca. 15% eller ca. 25%, ved at indikere dette i kolonnen.

De bedes underskrive kommissionsblanketten og sikre Dem, at Bruun Rasmussen modtager den senest **24 timer** før auktionens start.

Hvis Deres oplysninger ikke er tilstrækkelige, kan Bruun Rasmussen undlade at byde for Dem, ligesom Bruun Rasmussen ikke kan gøres ansvarlig for fejl ved budgivning.

INTERNET:

Kommissionsbud kan afgives på hjemmesiden bruun-rasmussen.dk direkte fra siden med den effekt, De ønsker at byde på.

Seneste afgivelse af bud via hjemmesiden er **3 timer** før auktionens start.

Afgivne bud kan ses på hjemmesiden under "Deres bud", når de er logget ind. Kontakt teknisk support på 8818 1114 for spørgsmål om registrering og budgivning via internettet.

For yderligere information, se "Købskonditioner", §1.

TELEFONBUD:

Såfremt De ønsker at byde pr. telefon, bedes De oplyse Bruun Rasmussen Deres navn og telefonnummer samt hvilke katalognumre, De ønsker at byde på, senest **3 timer** før auktionens start. De vil så blive ringet op kort før, den aktuelle vare kommer under hammeren, og De kan på denne måde deltage i auktionen uden selv at være til stede.

For yderligere information, se "Købskonditioner" på bruun-rasmussen.dk under "Guide".

COMMISSION BIDS

KOMMISSIONSBUD

Skal være Bruun Rasmussen i hænde senest **24 timer** før auktionens start.

Must be submitted no later than 24 hours prior to the start of the auction.

AUKTION NR AUKTION NO: **917**

Navn Name: *

Adresse Address: *

Postnr./by City: *

Land Country: * Fax:

Tel: *

e-mail: CVR-nr. VAT No.:

Bank: Konto nr. Acct. No.:

Adresse Address:

Postnr./By City: Land Country:

Tel: Kontaktperson Contact:

Obligatoriske felter er mærket med en stjerne * *Mandatory fields are marked with an asterisk **

Undertegnede giver hermed fuldmagt til Bruun Rasmussen Kunstauktioner A/S om på mine vegne at købe nedennævnte katalognumre så fordelagtigt som muligt, inden for det af mig anførte beløb, i hammerslag. *I hereby request that Bruun Rasmussen bid on my behalf on the following lots up at the prices indicated below.*

Undertegnede har udfyldt ovennævnte med de ønskede oplysninger, samt har accepteret købskonditionerne. *The undersigned has supplied the required information and agrees to be bound by the conditions of purchase.*

Signatur: * B.R. kunde-nr. Client No.:

Jeg ønsker at modtage salgsresultater på de emner jeg har budt på via email dagligt efter auktion
 I wish to receive sales results on the items I have been bidding on via e-mail *every day* *after the auction*

på e-mail adressen *on this e-mail address:*

Katalog nr. Lot. No.	Beskrivelse Description	Bud kr. Bid DKK	Max	+15%	+25%

BRUUN RASMUSSEN KUNSTAUKTIONER A/S

Norgaardsvej 3 · DK-2800 Kongens Lyngby · Tel +45 8818 1111 · bids@bruun-rasmussen.dk · bruun-rasmussen.dk

Ret til ændringer forbeholdes © 2023 Bruun Rasmussen Kunstauktioner
Foto: Peter Grosen, Henrik Wichmann & Peter Madsen. Tilk: Cool Gray
Grafik og dtp: Jorge Figueiredo



 DESIGN

